



SYMONDS + GREENHAM

Estate and Letting Agents



5 Barnard Park, Hull, HU7 3FP **£150,000**

IMMACULATELY PRESENTED THREE-BEDROOM SEMI-DETACHED HOME IN SOUGHT-AFTER KINGSWOOD, FEATURING A SPACIOUS LOUNGE DINER WITH FRENCH DOORS, MODERN KITCHEN, BEAUTIFUL REAR GARDEN, AND OFF-STREET PARKING FOR TWO VEHICLES.

Nestled in on Barnard Park, Kingswood, this immaculate three-bedroom semi-detached house presents an exceptional opportunity for both first-time buyers and those looking to downsize. The property is beautifully maintained and ready for you to move in without delay.

Upon entering, you are welcomed into a spacious lounge/diner, which is bathed in natural light and features elegant French doors that open directly onto the lovely rear garden. This seamless connection between indoor and outdoor spaces is perfect for entertaining or simply enjoying a quiet moment in the fresh air. The fitted kitchen features a good range of modern units, providing both functionality and style, while a convenient ground floor w.c. adds to the practicality of the home.

The first floor comprises three well-proportioned bedrooms, each offering a comfortable retreat, alongside a modern house bathroom that caters to all your needs. This property is truly a credit to its current owners, showcasing a blend of contemporary design and homely charm. Outside, the front of the house offers off-street parking for two vehicles, ensuring convenience for you and your guests. The rear garden is a delightful space, perfect for relaxation or family gatherings.

CENTRAL HEATING

The property has the benefit of gas central heating (not tested).

COUNCIL TAX BAND

Symonds + Greenham have been informed that this property is in Council Tax Band "B"

DISCLAIMER

Symonds + Greenham do their utmost to ensure all the details advertised are correct however any viewer or potential buyer are advised to conduct their own survey prior to making an offer.

DOUBLE GLAZING

The property has the benefit of double glazing.

FLOOR PLAN DISCLAIMER

The measurements detailed on the floor plan are the maximum possible measurement for the length and width of the respective room, which can potentially be a measurement into an alcove, wardrobe or cupboard.

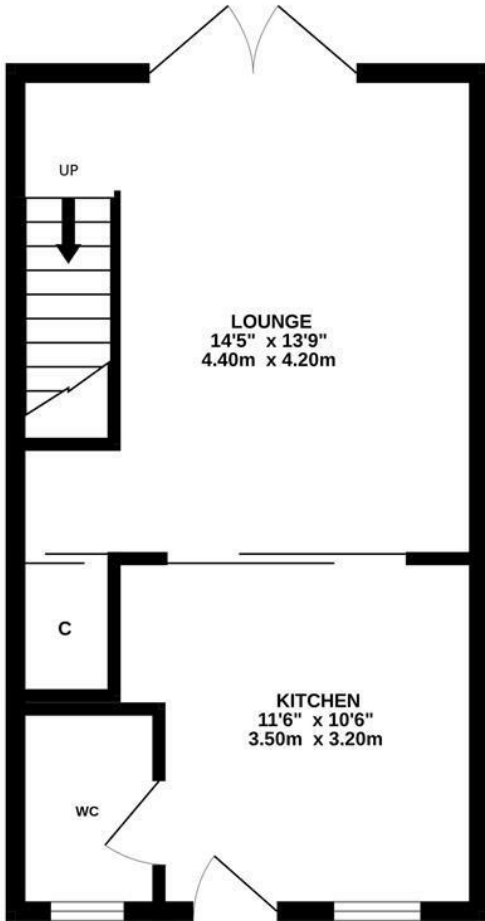
TENURE

Symonds + Greenham have been informed that this property is Freehold.

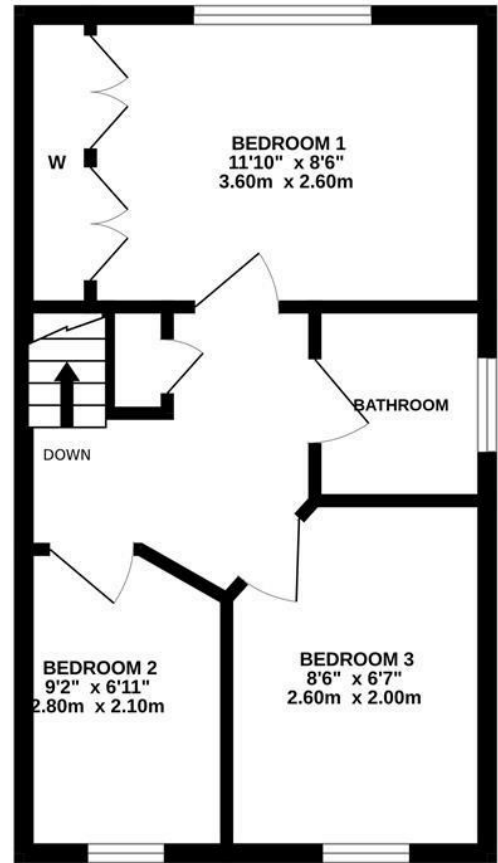
VIEWINGS

Please contact Symonds + Greenham on 01482 444200 to arrange a viewing on this property.

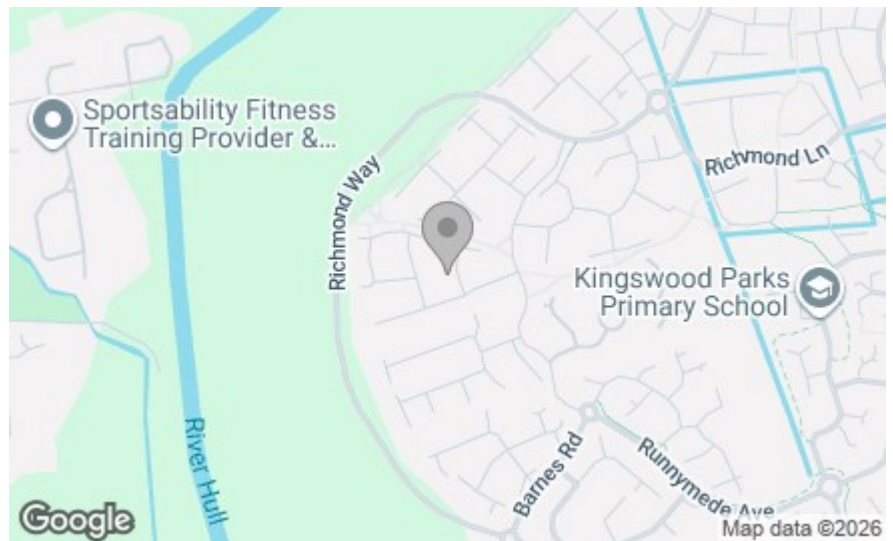
GROUND FLOOR



1ST FLOOR



Whilst every attempt has been made to ensure the accuracy of the floorplan contained here, measurements of doors, windows, rooms and any other items are approximate and no responsibility is taken for any error, omission or mis-statement. This plan is for illustrative purposes only and should be used as such by any prospective purchaser. The services, systems and appliances shown have not been tested and no guarantee as to their operability or efficiency can be given.
Made with Metropix ©2026



Energy Efficiency Rating	
Current	Potential
Very energy efficient - lower running costs	
(92 plus) A	
(81-91) B	
(69-80) C	
(55-68) D	
(39-54) E	
(21-38) F	
(1-20) G	
Not energy efficient - higher running costs	
England & Wales	EU Directive 2002/91/EC

Environmental Impact (CO ₂) Rating	
Current	Potential
Very environmentally friendly - lower CO ₂ emissions	
(02 plus) A	
(81-91) B	
(69-80) C	
(55-68) D	
(39-54) E	
(21-38) F	
(1-20) G	
Not environmentally friendly - higher CO ₂ emissions	
England & Wales	EU Directive 2002/91/EC