

Property ref: 67111

Skylark House, Reading, RG2 0PA

£1,295 PCM



A modern one bedroom property situated in the sought after Kennet Island development within walking distance to Green Park and easily

- One double bedroom

accessible to the M4. With regular buses into Reading Town Centre, local amenities and river walks on the doorstep, this would make an ideal home for a single professional or couple alike.
Reading Borough Council -Tax Band C.

Available 27/08/2026

- Open living room/kitchen area
- Allocated parking; Electric heating
- Close links to the A329 & M4
- Walking distance to local amenities/bus routes
- Furnished; EPC Rated: C; Managed by HASLAMMS

*Fees For Assured Periodic Tenancies: when you rent a property from us you will be required to pay a sum equivalent to one weeks' rent for a holding deposit. Upon successful application, this amount will be off set against your first months' rent. You will also be required to pay a security deposit equivalent to 5 weeks' rent which will be held and protected in line with Deposit legislation. For more information about our fees please visit: www.haslams.net
Fees for all other tenancies (Non Housing Act Tenancies / Company Lets): when you rent a property from us we will charge you a one-off fee per property. This charge is the equivalent of 15 days of the monthly rental charge (+VAT) with a minimum fee of £450 (inc.VAT) up to a maximum of £650 (inc.VAT). Other fees may apply depending on your circumstances.

0118 960 1055

lettings@haslams.net www.haslams.net

Haslams Estate Agents Ltd, 159 Friar Street, Reading, Berkshire, RG1 1HE







Plot locator

1 Bedroom Apartment
1313, 1329, 1429

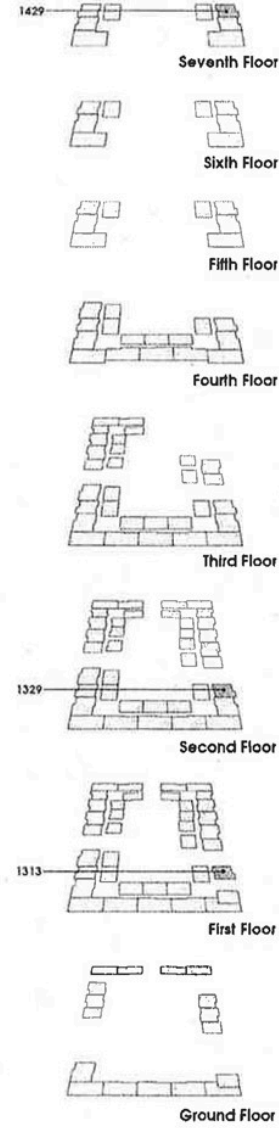


Key

- C Cupboard
- W Fitted Wardrobe
- ◄► Measurement Points
- ⊠ Mechanical Ventilation System
- ⊠ Plumbing for washing machine

Dimensions

Total Area	41.9 m ²	451.2 sq ft
Living/Dining	3.8m x 3.9m	
Kitchen	2.9m x 1.8m	
Bedroom	3.1m x 4.0m	



126' x 129'

95' x 61'

101' x 132'