



Westbourne Terrace, W2

£850,000

A spacious two bedroom apartment with its' own private entrance in a Grade II Listed Victorian conversion. The property has a open plan reception with room to dine and entertain, two bathrooms, wooden floors and direct access to the shared garden.

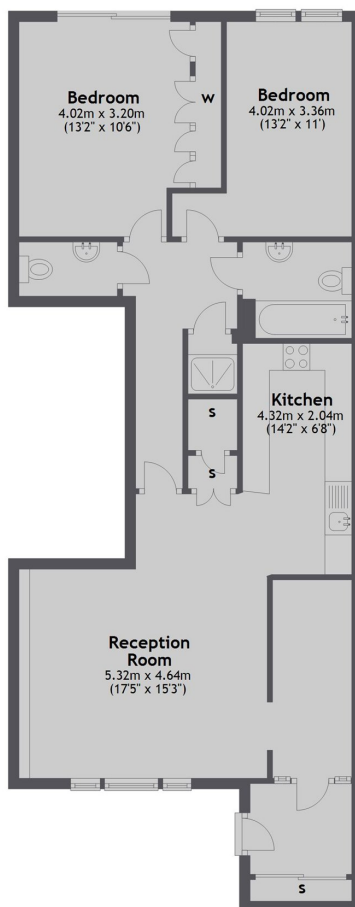
The property is ideally located for Paddington Station, and Lancaster Gate underground. The open spaces of Hyde Park are within easy walking distance.

Features

- Two Bedroom
- Period Conversion
- Allocated Car Parking Space
- Shared Garden
- Hyde Park
- Share Of Freehold

Westbourne Terrace, London, W2

Lower Ground Floor



Total area: approx. 81.2 sq. metres (873.8 sq. feet)