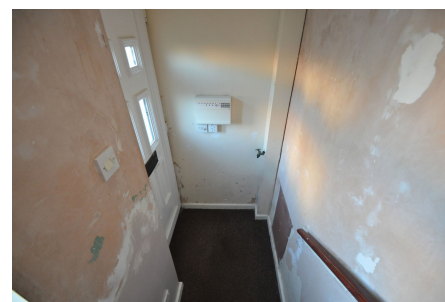


Victoria Parade, New Brighton

£110,000 Council Tax Band A EPC Rating E

2 1 1



A stroll from the promenade this two bedroom apartment offers lots of potential. Being sold with no chain this would be an ideal purchase for someone looking to get on the property ladder quickly! Set in a prime location just a stone's throw to the promenade (59 steps to the beach to be precise!), close to amenities available in New Brighton and Marine Point, including cinema, supermarket, and excellent transport/commuter links, plus next to the vibrant shops, restaurants and cafes on Victoria Road itself. Interior: landing, hallway, living area open plan to the kitchen, two bedrooms and shower room. Complete with uPVC double glazing and electric heating. Exterior: allocated under-cover secure parking space. Viewing is essential!

Key Features

- Two Bed 1st Floor Flat
- No Ongoing Chain
- uPVC Double Glazing
- EPC Rating E
- Council Tax Band A
-
-
-
-

