



Price
£550,000

Freehold

4x  1x  2x 

**Sole Farm Avenue,
Bookham, Leatherhead,
Surrey, KT23**

OVER 60?

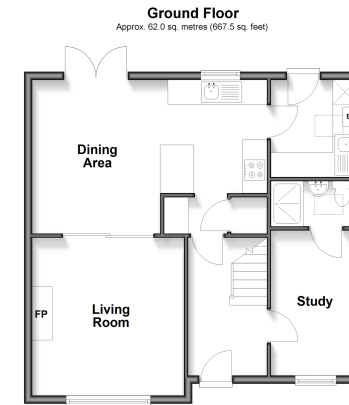
Secure this property
for up to **59% less!**

cubitt & west
Helping you move forwards



Main features

- Village location, walking distance to local amenities
- Accommodation over 3 floors
- Large rear garden
- Driveway parking for 2-3 cars
- Scope to extend & modernise subject to necessary consents



Accommodation

GROUND FLOOR

Hallway
 Kitchen: 9'0 x 8'0 (2.75m x 2.44m)
 Dining Area: 12'7 x 10'4 (3.84m x 3.15m)
 Living Room : 13'3 x 12'1 (4.04m x 3.69m)
 Study: 11'2 x 6'7 (3.41m x 2.01m)
 Shower Room

FIRST FLOOR

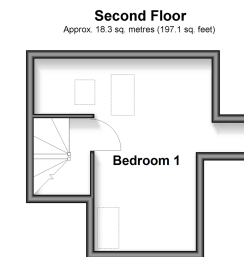
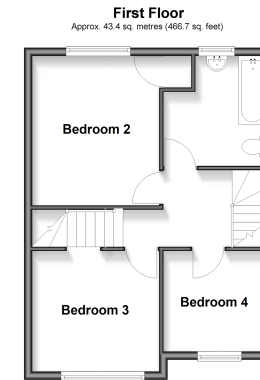
Landing
 Bedroom 2: 12'7 x 10'4 (3.84m x 3.15m)
 Bedroom 3: 10'4 x 9'4 (3.15m x 2.85m)
 Bedroom 4: 8'2 x 8'1 (2.49m x 2.47m)
 Bathroom

SECOND FLOOR

Landing
 Bedroom 1: 14'7 x 12'9 (4.45m x 3.89m)

OUTSIDE

Rear Garden
 Driveway



Call Leatherhead - 01372 373780 ■ CubittAndWest.Co.Uk

- Legal advice should be taken to verify fixtures/fittings, planning, alterations and/or lease details
- Appliances & services are untested, dimensions are approximate and floor plans are not to scale
- Through a Homewise Home For Life Plan people aged 60+ can secure this property for up to 59% less, by purchasing a Lifetime Lease



21108201/20260207/MB1/JG