



ADDISON ROAD, W14

£4,000 per month

This spacious and beautifully presented flat boasts its own private entrance and side access, offering excellent lateral living space throughout. The generous west-facing reception room flows into a bright

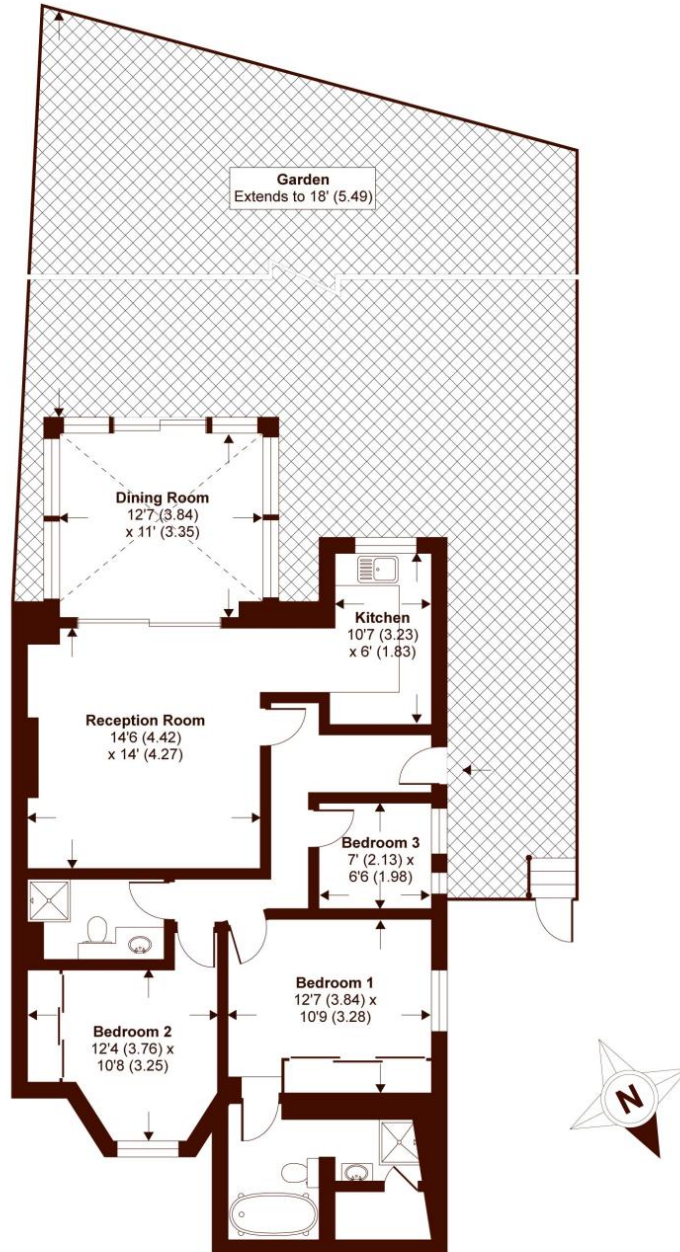
Three Bedrooms
Two Bathrooms
Private Garden

Off-Street Parking
Newly Refurbished
Open Plan Reception

STEP INSIDE ADDISON ROAD

Addison Road, London W14

APPROX. GROSS INTERNAL FLOOR AREA 1030 SQFT / 95.7 SQM



LOWER GROUND FLOOR

Whilst every attempt has been made to ensure the accuracy of the floor plans contained here, measurements of doors, windows and rooms are approximate and no responsibility is taken for any error, omission or mis-statement. These plans are for representation purposes only as defined by the RICS code of Measuring Practice and should be used as such by any prospective purchaser.

Copyright nichecom.co.uk 2010 Produced for Marsh & Parsons REF : NOT090307

Holland Park
020 7605 6895

Energy Rating: We aim to make our particulars both accurate and reliable. However, they are not guaranteed; nor do they form part of an offer or contract. If you require clarification on any points then please contact us, especially if you're traveling some distance to view. Please note that appliances and heating systems have not been tested and therefore no warranties can be given as to their good working order

MARSH &
PARSONS