



GARDEN APARTMENT, 11 GRANGE COURT ROAD

WESTBURY ON TRYM
BS9 4DP

GARDEN APARTMENT, 11 GRANGE COURT ROAD

WESTBURY ON TRYM BS9 4DP

LOCATION

Grange Court Road is a discreet road close to a wide range of amenity available from nearby Henleaze Road and Westbury Village. The 400 acres of Durdham Downs is within level walking distance and also in proximity are a great range of state and independent schools, primary and secondary. There are good sporting facilities in North West Bristol including golf courses and health and leisure clubs. The nearby A4018 provides good communication links to the motorway networks and Bristol's commercial centre. Bristol has two mainline train stations, Parkway and Temple Meads which are 4.3 and 4.1 miles respectively and Bristol Airport has flights to many European and some long haul destinations

ACCOMMODATION

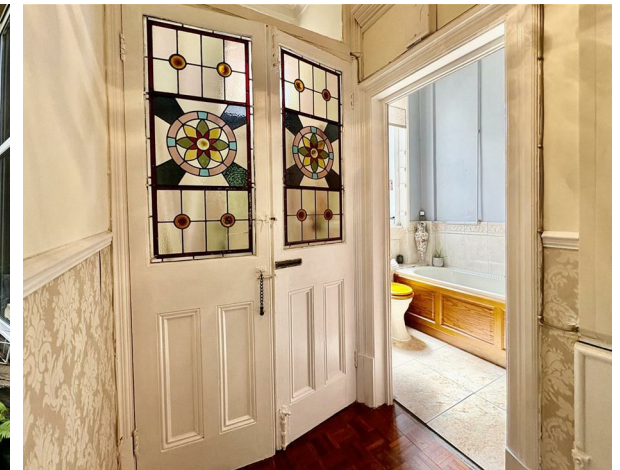
Please see the floorplan for room measurements and the property layout.

Enjoying its own private level access, the property is flooded with natural light, with impressive Victorian bay windows to both the front and rear elevations ensuring a bright and welcoming atmosphere throughout. The accommodation benefits from notably high ceilings and an abundance of original character features, including beautiful stained-glass doors, wooden flooring, and elegant period detailing that reflect the building's heritage. There is also a useful under-stair storage area.

The spacious layout centres around a gracious reception hall, leading to well-proportioned living accommodation and two attractive bedrooms. Every room enjoys natural light, enhancing the sense of space and refinement that defines this remarkable home. The grand living room provides direct views of the rear garden from the bay window. There is also a sizeable kitchen/breakfast room with direct access to garden and a beautiful separate dining area. There is also a family bathroom with white suite.

A particular highlight is the magnificent private rear garden, extending approximately 67 feet and providing a wonderfully secluded outdoor retreat, ideal for entertaining, gardening, or simply relaxing in peaceful surroundings. To the front, a private low-maintenance garden creates an attractive approach and further enhances the property's appeal.

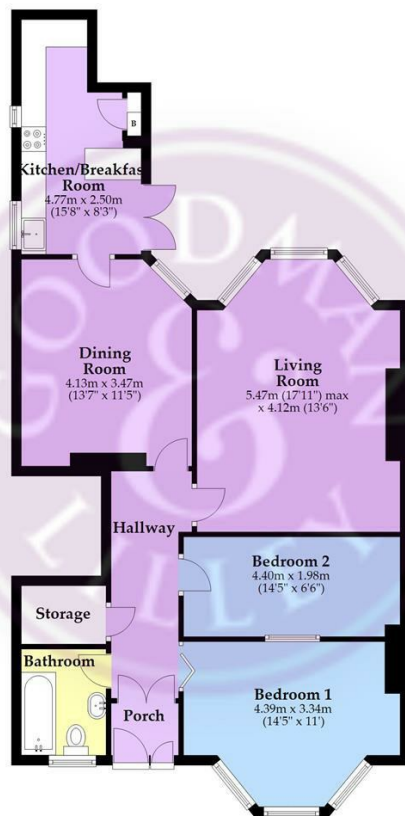
Combining timeless Victorian elegance with private gardens and a discreet setting, this outstanding garden flat offers a rare opportunity to acquire a characterful home in one of the area's most desirable locations.







Ground Floor
Approx. 81.7 sq. metres (879.8 sq. feet)



Total area: approx. 81.7 sq. metres (879.8 sq. feet)

Whilst every attempt has been made to ensure accuracy of the floor plan all measurements are approximate and no responsibility is taken for any error, omission or measurement.
Plan produced using PlanLift.

**GOODMAN & LILLEY
BRANCH NETWORK**

HENLEAZE

156 Henleaze Road
Henleaze
BS9 4NB
0117 213 0777
henleaze@goodmanlilley.co.uk

SHIREHAMPTON

9 HIGH STREET
SHIREHAMPTON
BS11 0DT
0117 213 0333

PORTISHEAD

Rembrandt House
36 High Street
Portishead
BS20 6EN
01275 430440
sales@goodmanlilley.co.uk

SHIRE@GOODMANLILLEY.CO.UK

LETTINGS

01275 299010
LETTINGS@GOODMANLILLEY.CO.UK

CLEVEDON

28 Hill Road
Clevedon
BS21 7PH
01275 403 660
clevedon@goodmanlilley.co.uk

LAND & NEW HOMES

0117 213 0151
LNH@GOODMANLILLEY.CO.UK

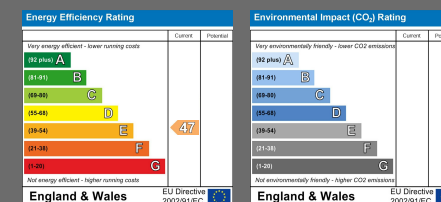
2 BEDROOMS
TENURE - LEASEHOLD

- Large hall floor garden flat
- Private front and large rear garden
- High ceilings and double glazed windows throughout
 - Large living room
- Separate kitchen breakfast room

2 RECEPTION ROOMS
IN ALL 1151.75 SQ FT

- Private level access
- An abundance of period features
 - 2 bedrooms
 - Separate dining room
 - Family bathroom

1 BATHROOMS
COUNCIL TAX BAND - C



Opening hours vary slightly in each office
Mon to Fri - Usually 9am till 6pm
Saturday 9.00am-4.00pm