

Mike  
**Dobson**



**3 Saxon Grange**

Sherburn In Elmet, Leeds, LS25 6NQ

**£400,000**

# 3 Saxon Grange

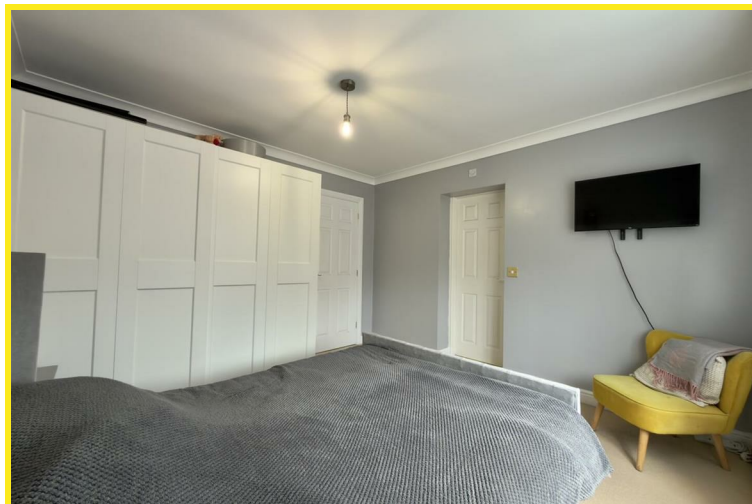
Nestled in the charming area of Saxon Grange, Sherburn In Elmet, this impressive semi-detached house offers a perfect blend of modern living and comfort. With five well-proportioned bedrooms, including four doubles and a single that could easily serve as a study, this home is ideal for families or those seeking extra space.

The heart of the home is undoubtedly the open-plan kitchen and dining area, which boasts a stylish island, a traditional Belfast sink, and high-quality integrated appliances, including a double oven, microwave, and dishwasher. The black granite worktops add a touch of elegance, while the good-sized utility area enhances practicality. The recently serviced boiler ensures peace of mind for the new owners.

The spacious lounge features an electric wood burner, creating a warm and inviting atmosphere, and the bi-folding doors seamlessly connect the indoor space to the rear garden, perfect for entertaining or enjoying a quiet evening outdoors. The garden itself is designed with composite decking and a summer house, providing a delightful retreat.

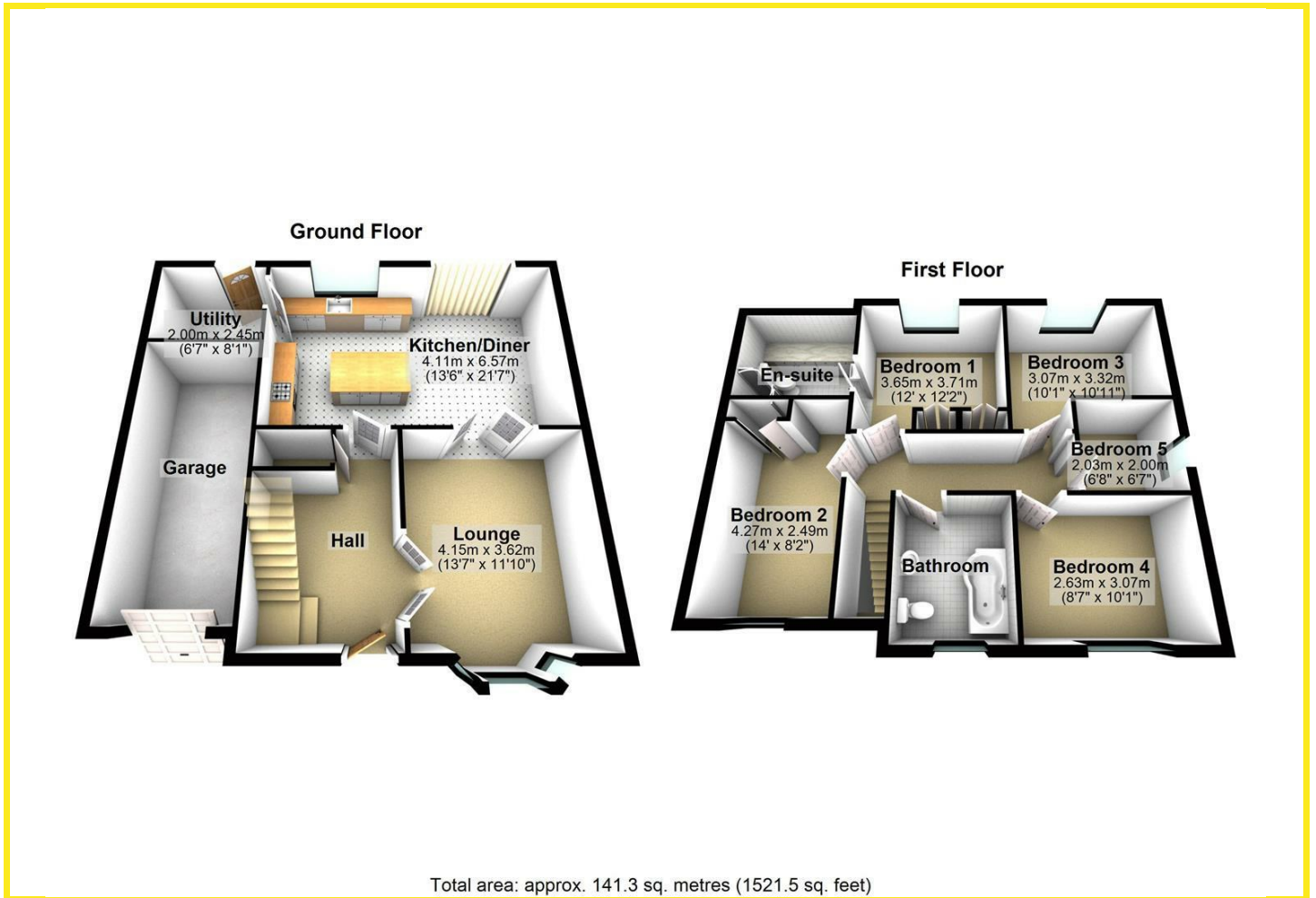
Additional features include a well-appointed family bathroom and oak doors throughout, adding a touch of sophistication. The property also benefits from a single garage with an electric door, complete with power and lights, offering ample storage or workshop space. The home also has a driveway for up to 3 cars.

This large semi-detached home in Sherburn In Elmet is not just a property; it is a lifestyle choice, offering comfort, style, and convenience in a sought-after location. Don't miss the opportunity to make this wonderful house your new home.

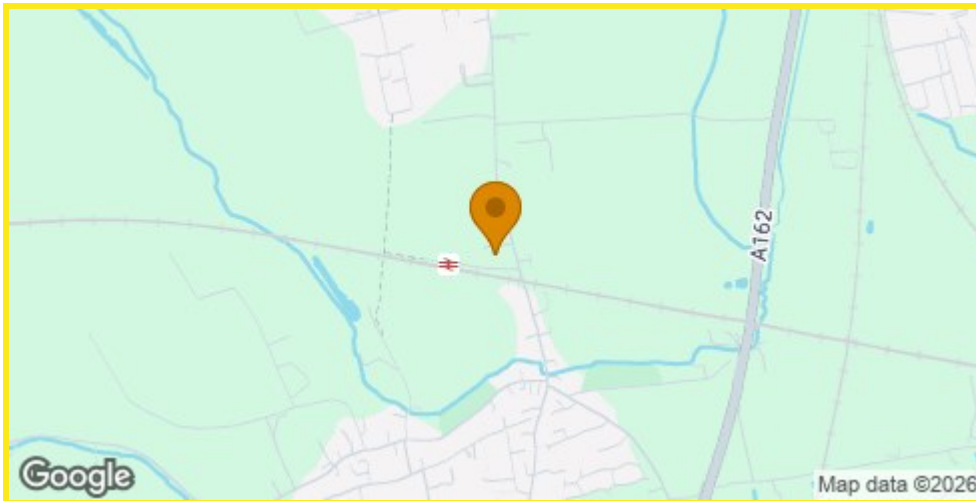




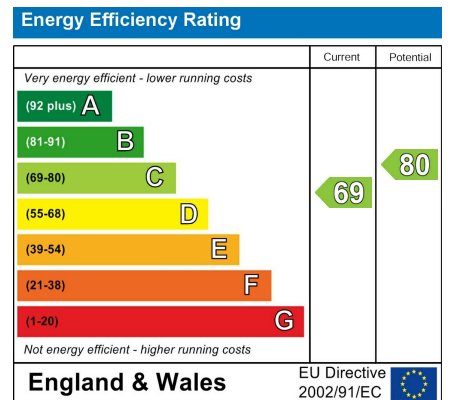
# Floor Plan



## Area Map



## Energy Efficiency Graph



## Directions

From our Sherburn in Elmet office turn left onto Low Street and continue towards South Milford. Saxon Grange can be found on the right hand side before the railway bridge and before entering South Milford.

These particulars, whilst believed to be accurate are set out as a general outline only for guidance and do not constitute any part of an offer or contract. Intending purchasers should not rely on them as statements of representation of fact, but must satisfy themselves by inspection or otherwise as to their accuracy. No person in this firm's employment has the authority to make or give any representation or warranty in respect of the property.

98 Wolsey Croft, Sherburn in Elmet, LS25 6DP

Tel: 01977 684258 Email: sherburn@mDOBSON.CO.UK <https://www.mDOBSON.CO.UK>