



Crouch House, Brownsfield Road, Lichfield

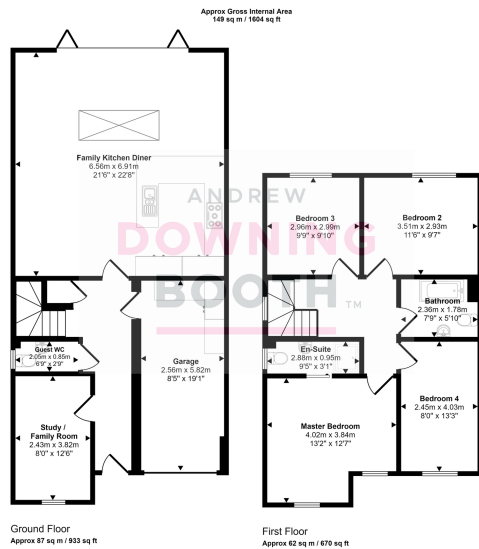
Offers Over £500,000

🛏 4 🚿 2 🚗 2



Completed in 2023, this wonderful and spacious family home benefits from being extremely individual and finished to a superb high specification, with a practical family friendly layout and over £50,000 of upgrades. Sitting on the desirable 'Brownsfield Road', this is a home that is unlike any others, and it really is hugely impressive! The accommodation comprises a through entrance hall, guest WC, flexible reception room and a wonderful open plan living kitchen diner with bi-fold doors opening out to the garden, and roof lantern flooding the room with light. Upstairs are four double bedrooms as well as a stunning family bathroom and en-suite. Outside is just as impressive, with a block paved driveway providing plenty of off street parking in front of the garage which has an electric door and has a utility area to the rear. The rear garden is beautifully landscaped incorporating a large paved patio, lawn, colourful well stocked beds and a further gravelled seating area. This can only be appreciated with a viewing, so don't miss out and book in your visit today!





This floorplan is only for illustrative purposes and is not to scale. Measurements of rooms, doors, windows, and any items are approximate and no responsibility is taken for any errors, omissions or misstatements. Icons of items such as bathroom scales are representative only and may not look like the real items. Made with Maple Drafting 360.

- Four Double Bedroom Detached Home
- High Specification Finish, With Tens Of Thousands Of Pounds Of 'Upgrades'
- Flexible Study With Family Room
- Stunning Open Plan Family Kitchen Diner With Bi-Fold Doors
- Stunning Bathroom, En-Suite & Guest WC
- Large Drive, Garage & Landscaped Rear Garden



Energy Efficiency Rating		
	Current	Potential
Very energy efficient - lower running costs		
(92 plus) A		
(81-91) B	85	91
(69-80) C		
(55-68) D		
(39-54) E		
(21-38) F		
(1-20) G		
Not energy efficient - higher running costs		
England & Wales	EU Directive 2002/91/EC	