



iwstates.com

1 Gallon Drive, Buntingford, Hertfordshire, SG9 9UH

1 Gallon Drive, Buntingford, Hertfordshire, SG9 9UH

Price £485,000

- Beautifully presented three-bedroom Wheatley Homes property, known as The Dane.
- Spacious lounge with windows to the front and side aspects.
- Principal bedroom with fitted wardrobes, built-in storage, air conditioning, and en-suite shower room.
- Landscaped rear garden with patio, two lawned areas, mature planting, raised beds, and decked seating area.
- Driveway parking and garage, with side gated access from the rear garden.
- Set within a pretty and well-regarded development in Buntingford.
- Good-size kitchen/diner with integrated appliances and French doors opening onto the garden.
- Modern family bathroom with bath, shower screen, vanity wash hand basin, and concealed-cistern WC.
- Single-glazed summer house with French doors, power, and lighting.
- Walking distance to Buntingford amenities, with excellent local schools, easy access to the A10, and the remainder of its NHBC warranty.

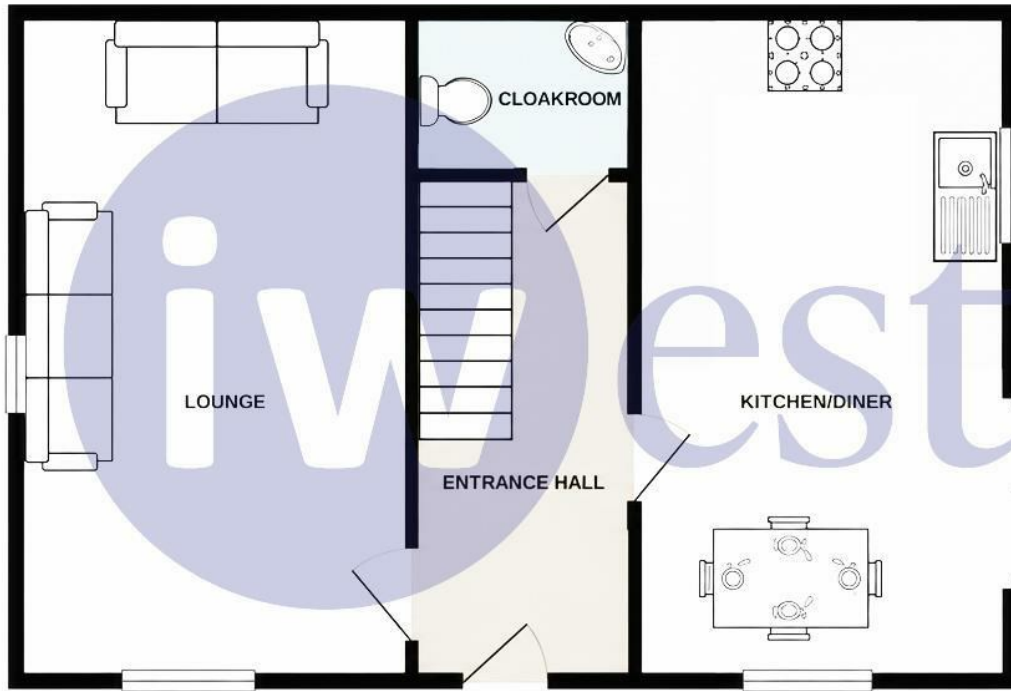
A beautifully presented three-bedroom Wheatley Homes property, The Dane is set within a pretty and sought after development in Buntingford, within walking distance of local amenities.

The accommodation is well arranged and offers a spacious lounge, a good-size kitchen/diner, three bedrooms, and an en-suite to the principal bedroom. Externally, the property benefits from a landscaped rear garden, driveway parking, and a garage.

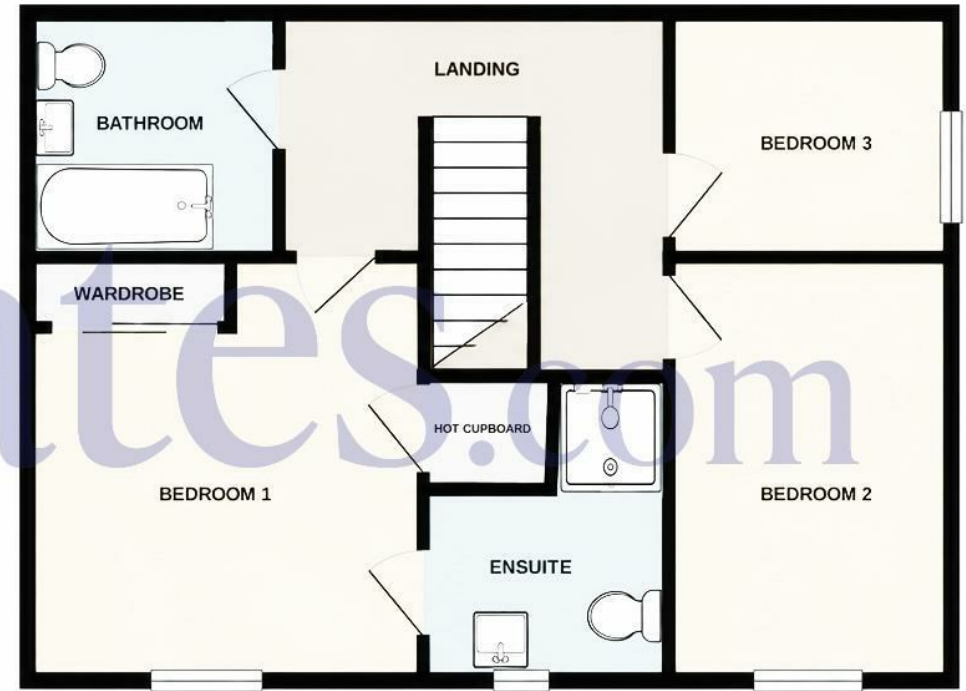
Buntingford is Hertfordshire's smallest town and offers a lovely community feel, well regarded local schools, a range of shops and amenities, and convenient access to the A10 for commuters. The property also benefits from the remainder of its NHBC warranty.

I W Estates, 42 High Street, Buntingford, Hertfordshire SG9 9AH | 01763 272 391
buntingford@iwestates.com | www.iwestates.com

Ground Floor



First Floor



Total area: 915 sqft approx. (85sqm approx.)
Excluding Garage.

Entrance

Composite front door with obscure glazed insert, security light, and canopy porch.

Entrance Hall

Wood-effect flooring, alarm panel, radiator, and understairs storage cupboard. Stairs rise to the first floor with doors leading to:

WC

White suite comprising low-level WC and pedestal wash hand basin with mixer tap and tiled splashback. Tiled flooring, extractor fan, and radiator.

Living Room

17'2" x 10'8"
Fitted carpet, radiator, and windows to the front and side aspects.

Kitchen / Dining

17'2" x 8'10"
Fitted with a range of gloss white wall and base units with laminate worktops. Integrated appliances include a fridge/freezer, washing machine and dishwasher. Built-in oven and grill with four-ring gas hob, stainless steel splashback and extractor hood over.

One-and-a-half bowl Franke sink with mixer tap, half-tiled surrounds, tiled flooring, inset ceiling lights, and radiator to the dining area. Windows to the front and side aspects, with French doors opening onto the garden.

First Floor

Galleried Landing

Fitted carpet to the stairs and landing, radiator, and loft access.

Bedroom One

10'8" x 10'2"
Fitted carpet, radiator, air conditioning unit, and window to the front aspect. Double fitted wardrobe and large built-in shelved cupboard.

Ensuite

Suite comprising pedestal wash hand basin with mixer tap, low-level dual-flush WC with concealed cistern, and shower cubicle with handheld and rainfall shower attachments. Heated towel rail and inset ceiling lights.

Bedroom Two

10'2" x 8'10"
Fitted carpet. Radiator. Window to front aspect.

Bedroom Three

8'10" x 6'8"
Fitted carpet. Radiator. Window to rear aspect.

Bathroom

Suite comprising panel bath with shower attachment, fully tiled surround and glazed shower screen. Vanity wash hand basin with mixer tap and low-level dual-flush WC with concealed cistern. Heated towel rail, extractor fan, and inset ceiling lights.

Outside

Front

Front garden laid mainly to lawn with mature shrubs, bushes, and established planting. Paved pathway leading to the front door, with areas of shingle and access to the garage.

Rear Garden

Rear garden with patio area and two lawned sections, complemented by mature planting and raised beds. Side gated access leads to the driveway, with a personal door into the garage. Further benefits include security lighting, outside tap, power sockets, and steps leading to the decked area by the office.

Office

Single-glazed summer house with French doors opening onto the decked area and window to the side aspect. Fitted with power and light.

Single Detached Garage

Electric door. Power points.

Agents Notes

Loft is partially boarded with ladder & light
Boiler located in kitchen. Last serviced July 2026.
East Herts Council Tax Band: D (£2,455.59 p.a. - subject to change)
Service charge approximately £300 p.a. - subject to change

