

CELLINI BUILDING, SINGAPORE ROAD



£575,000

Discover this stunning purpose-built apartment located in the heart of West Ealing. Built in 2021, this contemporary home features over 825ft of generous living spaces, where every detail exudes quality and style. The undoubted star is the large open-plan living/dining room and bespoke, integrated kitchen where you can enjoy direct access to the southerly facing terrace; just perfect for soaking up the sun on leisurely weekends, or entertaining 'al fresco'. There's 2 double bedrooms and stylish fully-tiled bath and en suite shower rooms too. The property also features enclosed, landscaped, courtyard gardens, ideal for children to play and families to relax outdoors. Don't miss out on this exceptional residence, contact us today to schedule an appointment and make this beautiful apartment your new home!

TUFFIN & WREN

Independent Estate Agents



Further Information

For more details please call us on **020 8566 3366** or send an email to homes@tuffin-wren.co.uk.

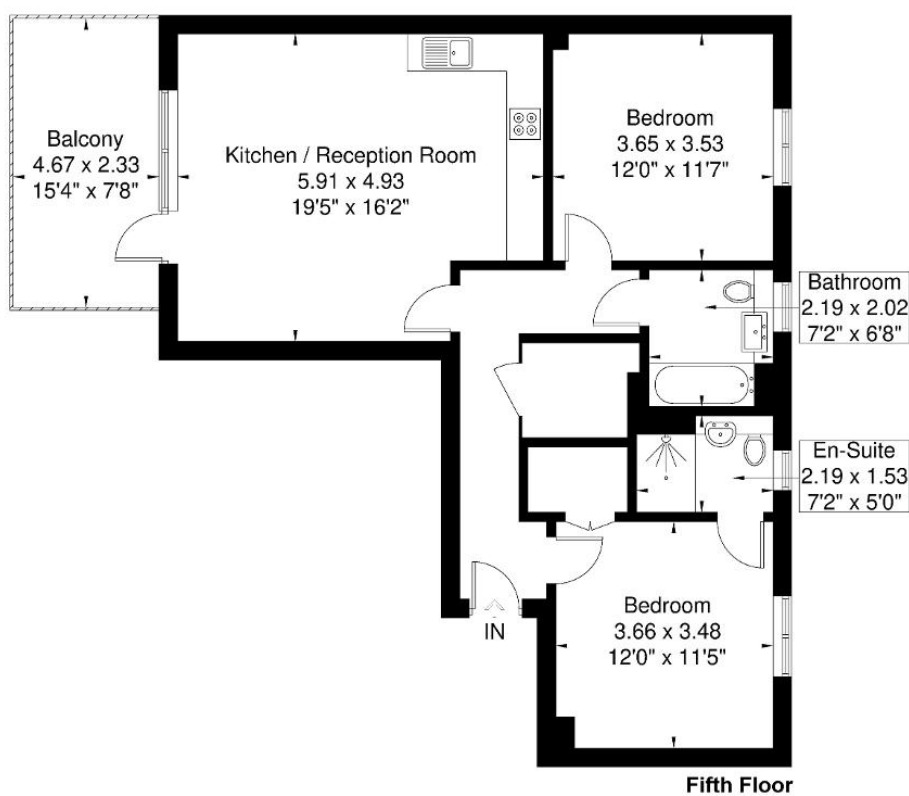
Please note it is not our company policy to test services, heating systems and domestic appliances, therefore we cannot verify that they are in working order. Prospective purchasers are advised to obtain verification from their solicitors and/or surveyors.

TUFFIN & WREN

Independent Estate Agents

Singapore Road

Approximate Gross Internal Area = 76.9 sq m / 827 sq ft



Although every attempt has been made to ensure accuracy, all measurements are approximate.
The floorplan is for illustrative purposes only and not to scale.
© www.perspective.co.uk

Score	Energy rating	Current	Potential
92+	A		
81-91	B	86 B	86 B
69-80	C		
55-68	D		
39-54	E		
21-38	F		
1-20	G		