



## EMPIRE SQUARE EAST, SE1

£1,295,000

Penthouse apartment  
Stunning roof terrace  
Two parking spaces  
Chain free  
Breathtaking views  
Concierge

@marshandparsons  
marshandparsons.co.uk

MARSH &  
PARSONS



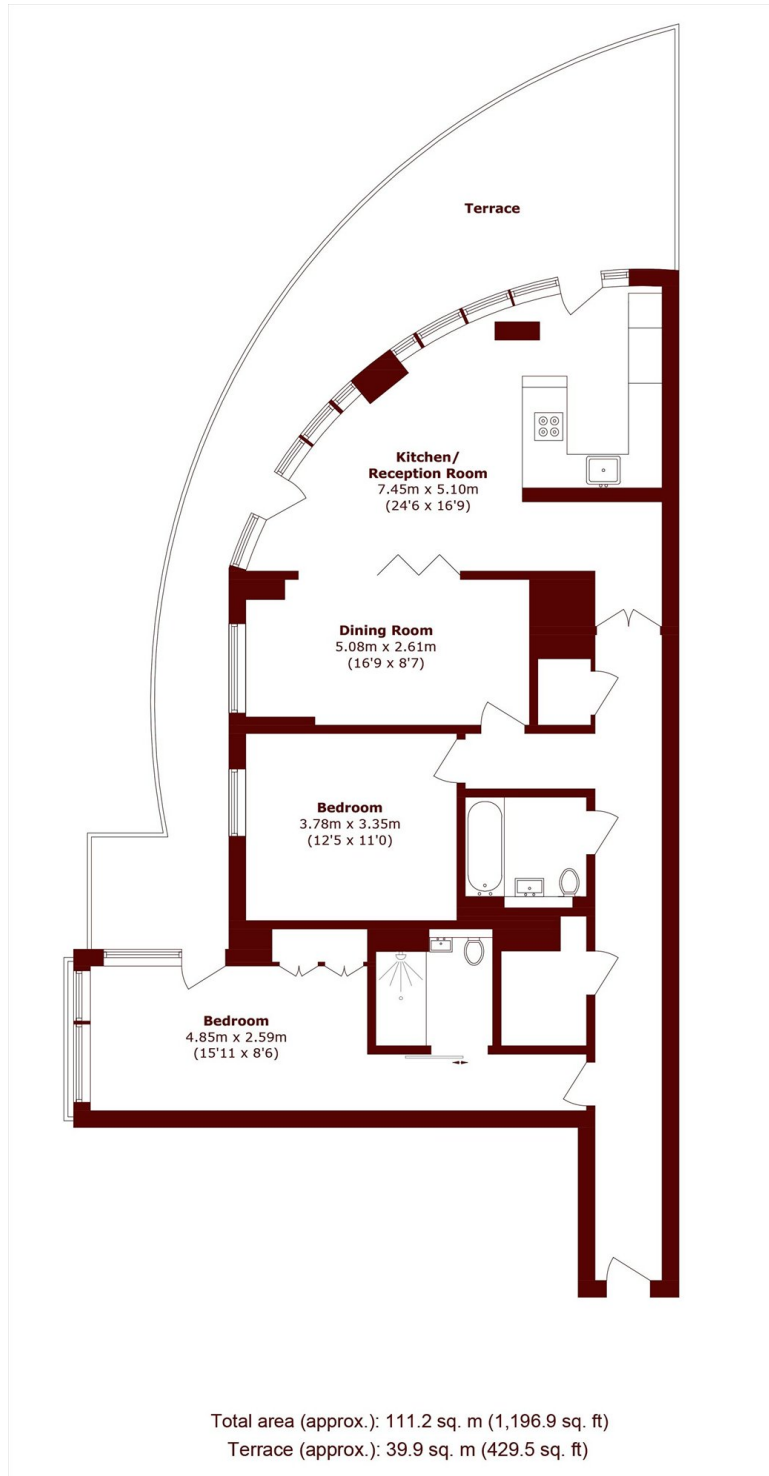
# ABOUT THE PROPERTY

This exceptional three bedroom penthouse offers luxurious contemporary living in the heart of London, with panoramic skyline views including The Shard. A bright open plan reception and fully fitted kitchen with floor to ceiling windows create an ideal space for modern living and entertaining. The principal bedroom features an en-suite, while two further double bedrooms provide flexibility. A wraparound terrace delivers stunning city views, complemented by two secure underground parking spaces.

Moments from Borough High Street, with Borough Market and the South Bank nearby, plus excellent transport links from London Bridge and Borough.



# STEP INSIDE EMPIRE SQUARE EAST



**Kennington**  
020 7587 1533

Energy Rating: C We aim to make our particulars both accurate and reliable. However, they are not guaranteed; nor do they form part of an offer or contract. If you require clarification on any points then please contact us, especially if you're traveling some distance to view. Please note that appliances and heating systems have not been tested and therefore no warranties can be given as to their good working order

**MARSH &  
PARSONS**