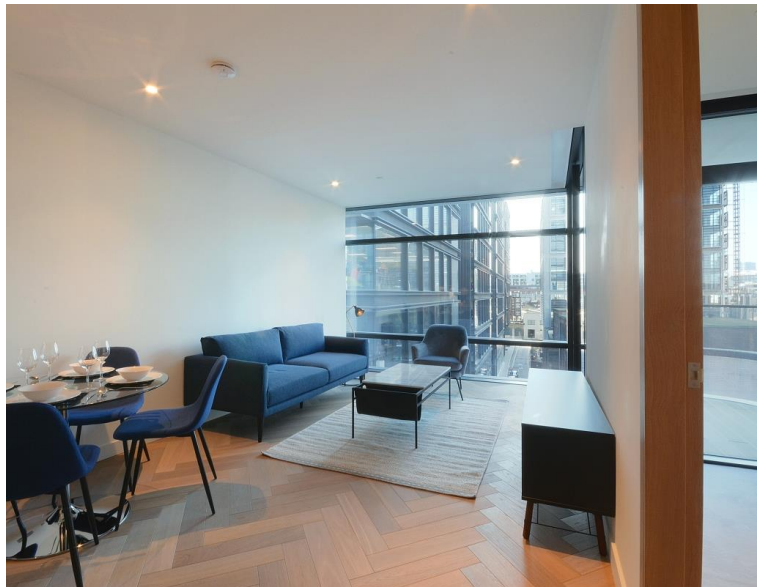
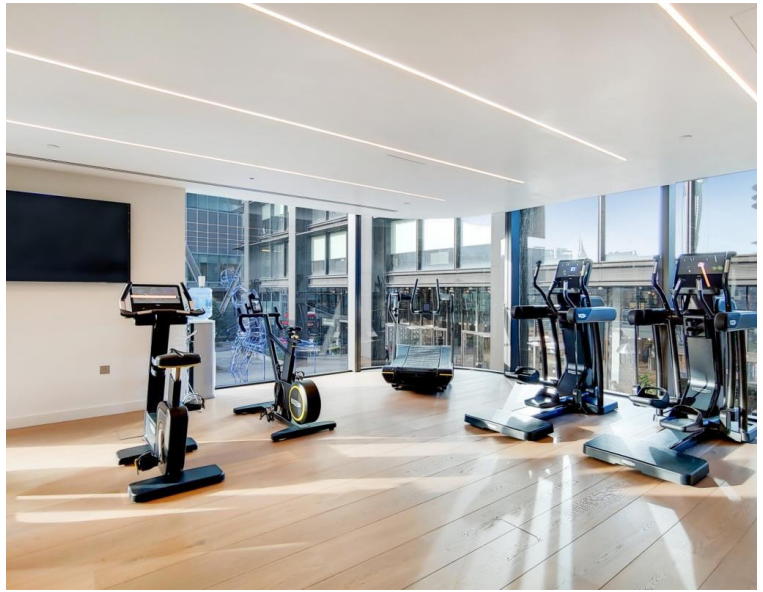
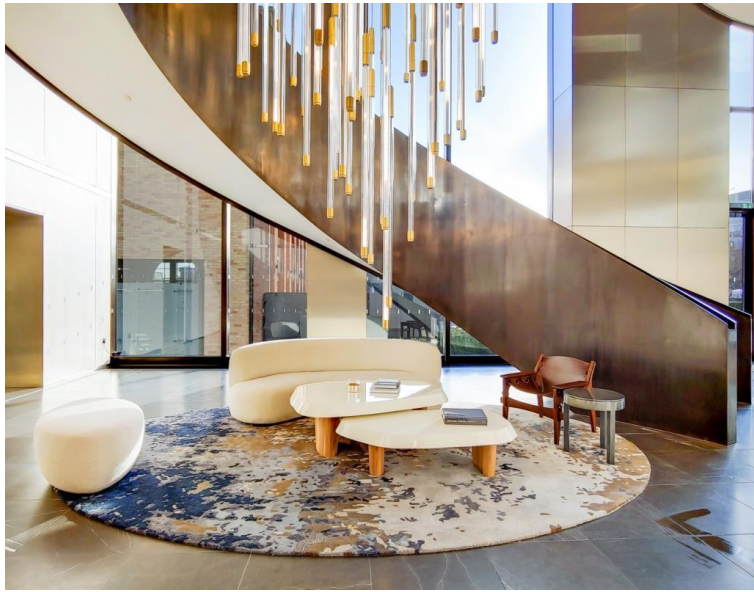


Principal Place, London EC2A

Offers In Excess Of £670,000 Leasehold







Description

Located on the fourth floor, this luxury one-bedroom apartment features a spacious open-plan reception area with fully fitted U-shaped kitchen, a private balcony, and a generous double bedroom with integrated wardrobes.

The apartment is finished to an exceptional standard with a luxury porcelain en-suite shower room, underfloor heating, comfort cooling, and elegant oak herringbone flooring throughout.

Principal Tower enjoys a prime location within easy walking distance of both Liverpool Street Station and Shoreditch High Street Station (both 0.3 miles).

Residents benefit from an impressive array of amenities including a swimming pool with Jacuzzi, spa facilities, a fully equipped gymnasium, residents' lounge and bar, private cinema room, and 24-hour concierge service.

Please note that cooling and heating are provided via a communal system, for which separate service charges apply.

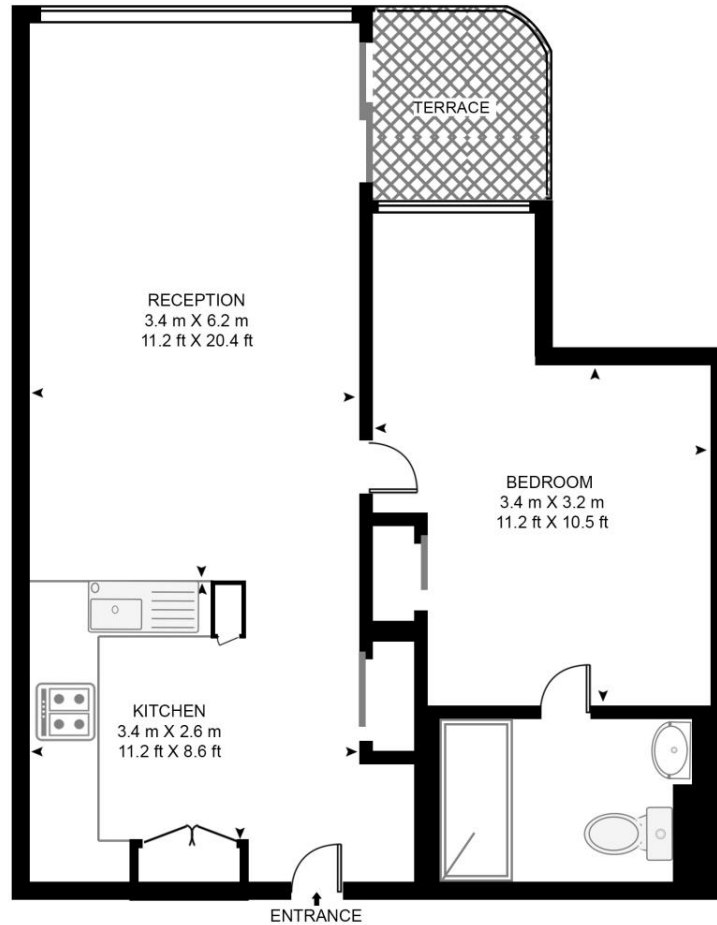
- West facing apartment
- Large private balcony
- 4th floor
- Open plan reception
- Large bedroom
- Residents pool & spa
- Residents gym
- 24 hour concierge
- 0.3 miles from Liverpool Street Station
- Approx 535 sq ft (49.7 sq m)

Floorplan

535 sq ft | 50 sq m

PRINCIPAL TOWER, EC2A

APPROXIMATE GROSS INTERNAL FLOOR AREA 535 SQ.FT (49.7 SQ.M)



FOURTH FLOOR

HDVA

This floor plan has been defined by the RICS Code of Measurement. This floor plan and all others are for approximate representative purposes only and upon usage is agreed to as such by the client.

WWW: hdvirtualart.com | TEL: 0203.974.1567 | EMAIL: info@hdvirtualart.com

City
25 Walbrook The Walbrook
Building,
London EC4N 8AF
+4420 7337 4000

Urban living, your way.

jll.co.uk/residential

© 2019 Jones Lang LaSalle IP, Inc. All rights reserved. All information contained herein is from sources deemed reliable; however, no representation or warranty is made to the accuracy thereof.

