



7 Swallowmead | College Hill | Steyning | West Sussex | BN44 3HE

H.J. BURT
Chartered Surveyors : Estate Agents

7 Swallowmead | College Hill | Steyning | West Sussex | BN44 3HE

Asking Price: £290,000 | Share of Freehold



- Beautifully presented ground floor apartment.
- Two Double Bedrooms, En-suite Shower room and main bathroom
- Spacious bay fronted living room
- Well appointed kitchen with integrated appliances
- Allocated parking space to rear
- Video entryphone
- Gas fired central heating and double glazing
- No onward chain

Description

A beautifully presented ground-floor apartment offering two generous double bedrooms within a modern, purpose-built development in the heart of Steyning. Tucked away on a quiet residential road just off the High Street, this light and airy home benefits from an allocated parking space and access to a large communal rear garden. A well-kept communal entrance hall leads to the private front door, complete with security video entry. Inside, a long hallway provides excellent storage. The spacious living/dining room features an attractive bay window, while the stylish, fully fitted kitchen includes a full range of integrated appliances. The property offers two double bedrooms: the main bedroom enjoys its own en-suite shower room, and the second bedroom sits conveniently beside the contemporary family bathroom. Additional features include full gas central heating and double glazing throughout.

Outside, residents can enjoy the communal gardens, and the property comes with its own allocated parking space. Offered with no onward chain.

Location

What 3 words [///archduke.stammer.title](#)

The property is well located close to the High Street and the old market town with its wide range of traditional local shops, trades and services. The town also boasts a health and leisure centre with a swimming pool and other community facilities with schools for all age groups and churches of most denominations.



Information

Photos & particulars prepared: January 2026 (Ref JW)

Services: Mains services of electricity, gas, water and drainage.

Maintenance Charges: approx. £1800 per annum

Ground Rent: NIL

Lease Length: 125 years from 1st June 2004

Managing Agents: Property Central (Hove) Limited

Local Authority: Horsham District Council

Council Tax Band: 'D'

Viewing

An internal inspection is strictly by appointment with:

H.J. BURT Steyning

The Estate Offices | 53 High Street | Steyning | West Sussex | BN44 3RE

01903 879488 | www.hjburt.co.uk | steyning@hjburt.co.uk



Find us @H.J.Burt



IMPORTANT NOTE: These particulars and photographs were prepared on the date as stated above by H.J. Burt in good faith for the guidance of purchasers. The descriptions, measurements and distances within the particulars were taken by H.J. Burt or taken from information supplied by the vendor, but should only be relied upon as approximations and not as statements or representations of fact. Information regarding the tenure of this property has not been verified and purchasers should consult their own solicitor for verification. H.J. Burt offer no warranty as to the condition of the property, services or appliances. Purchasers should satisfy themselves as to such condition. H.J. Burt have not made any enquiry concerning Planning Consents, Building Regulations or other approvals for any part of the property unless specifically referred to and purchasers are advised to make their own enquiries of the Local Authority.





Dimensions

Lounge 18' 0" x 14' 0" (5.48m x 4.26m) max

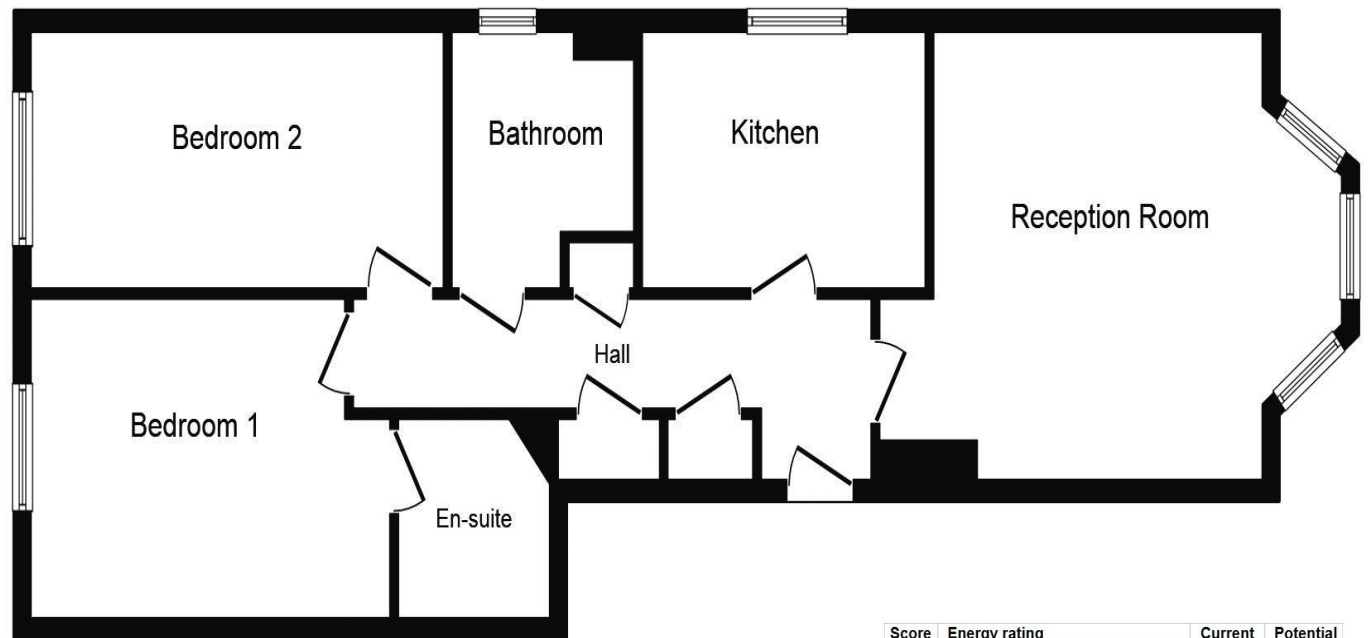
Kitchen 10' 0" x 7' 11" (3.05m x 2.41m)

Main bedroom 14' 1" x 9' 10" (4.29m x 2.99m)

En suite shower room

Bedroom 2 16' 0" x 7' 11" (4.87m x 2.41m)

Bathroom



Floor Plan



Total floor area 72.0 sq. m. (775 sq. ft.) approx

This plan is for illustration purposes only and may not be representative of the property. Plan not to scale.

Score	Energy rating	Current	Potential
92+	A		
81-91	B		
69-80	C	76 C	79 C
55-68	D		
39-54	E		
21-38	F		
1-20	G		