

1  
BED

No Ongoing Chain!  
55, St. Crispians, Seaford, BN25 2DY



Price £235,000

Freehold

**phillipmann**  
we do more

[www.phillipmann.com](http://www.phillipmann.com)

55 St Crispins, BN25 2DY

Approximate Gross Internal Floor Area = 48.18 sq m / 519 sq ft

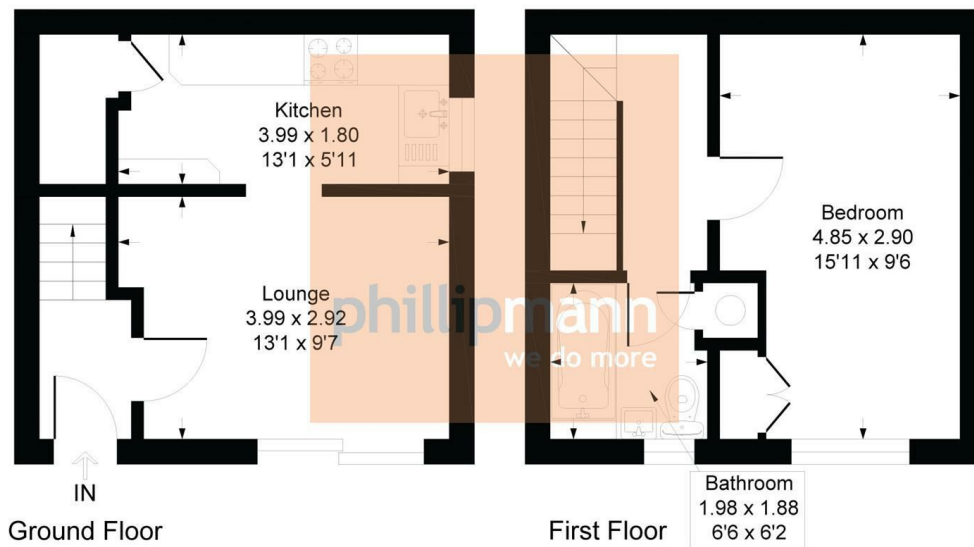


Illustration for identification purposes only, measurements are approximate, not to scale

inbrief...

This 1 bedroom group house is conveniently located within an easy level walk of Seaford town, which offers a good range of shops, pubs and restaurants along with train station, regular bus service and Seaford beach. The property is offered with vacant possession and although in need of updating has the benefit of double glazed replacement windows and RESIDENTS PARKING.

There is a covered entrance with bin store and meter cupboard.

The entrance hall has stairs to the first floor and door to the lounge which is a generous size, with sliding doors out to the rear.

Following into the kitchen which has multiple base and wall hung units, tiled splashbacks, stainless steel sink drainer, oven with four-ring gas hob, electric cooker hood, washing machine space, fridge freezer space and there is also a large understair storage cupboard.

Heading upstairs, the main bedroom is a large double with room for a chest of drawers, bedside tables, dressing table and a built-in wardrobe is included.

The bathroom has been tiled throughout and includes, standalone wash-hand basin, bath, electric power shower, W/C and a frosted glass window.

There is also an outside space which is very low maintenance.



Council Tax Band: B

EPC: D

moreinfo...



Phillip Mann Seaford Office  
1-3 Dane Road, Seaford, East Sussex, BN25 1LG  
01323 898666

To see more details on this & all our homes go to [www.phillipmann.com](http://www.phillipmann.com)