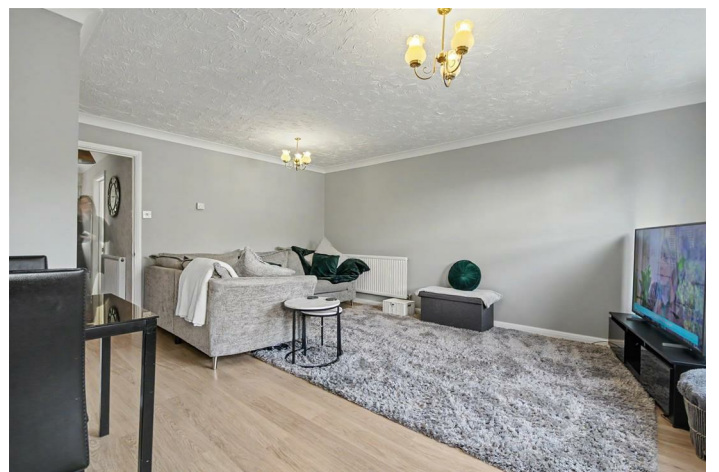


TO LET



House - Terraced (EPC Rating: C)

**26 PENDLESHAM RISE, TAVERHAM,  
NORWICH, NR8 6XG**

**£1250pcm**

- 3 Bedrooms
- Ensuite
- Garage
- Sought after location



# 3 Bedroom House - Terraced located in Norwich

Nestled in the charming area of Pendlesham Rise, Taverham, Norwich, this delightful property offers a perfect blend of comfort and modern living. With three well-proportioned bedrooms, including a master suite with an ensuite bathroom, this home is ideal for families or those seeking extra space.

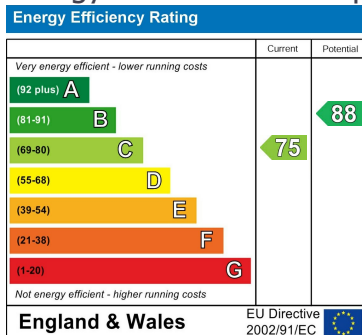
The property boasts a bright and airy reception room, creating a welcoming atmosphere for both relaxation and entertaining. Natural light floods the space, enhancing the overall sense of warmth and openness. The additional bathrooms provide convenience and privacy, making it easy to accommodate guests or family members. The property also benefits from a single garage and 1 additional parking space.

Situated in a desirable location, this home is close to local amenities, schools, and parks, making it an excellent choice for those who appreciate community living. This property presents a wonderful opportunity to enjoy a comfortable lifestyle in a sought-after area of Norwich.

Do not miss the chance to make this lovely home your own.



## Energy Performance Graph



Council Tax Band

**B**

Call us on

**01603 338433**

[norwich@thinkproperty.ltd](mailto:norwich@thinkproperty.ltd)  
<https://www.thinkproperty.ltd/>

Agents Note: Whilst every care has been taken to prepare these particulars, they are for guidance purposes only. All measurements are approximate and are for general guidance purposes only and whilst every care has been taken to ensure their accuracy, they should not be relied upon and potential buyers are advised to recheck the measurements.

