



Connells

Castlefields Close
Higham Ferrers Rushden



Property Description

Situated in the sought after Market Town of Higham Ferrers is this four bedroom home requiring some TLC. The property offers versatile accommodation across three floors including three reception areas, kitchen, utility & ground floor cloakroom as well as first floor en-suite & second floor bathroom.

Cloakroom

Low level wc, wash hand basin and radiator.

Entrance Hall

Double glazed door to front elevation.

Dining Room

Double glazed box bay window to front elevation, fireplace and radiator.

Kitchen Area

Fitted with a range of wall and base units with work surfaces over an sink drainer.

Breakfast Area

Double glazed French doors and windows to rear elevation. Radiator.

Utility Room

Double glazed door to rear elevation and fitted with a range of base units.

First Floor Landing

Storage cupboard.

Lounge

Double glazed French doors and window to front elevation, radiator.

Bedroom One

Double glazed window to rear elevation and radiator.

En-Suite

Double glazed window to rear elevation. Shower, low level wc, wash hand basin and radiator.

Second Floor Landing

Storage Cupboard.

Bedroom Two

Double glazed window to rear elevation and radiator.

Bedroom Three

Double glazed window to front elevation and radiator.

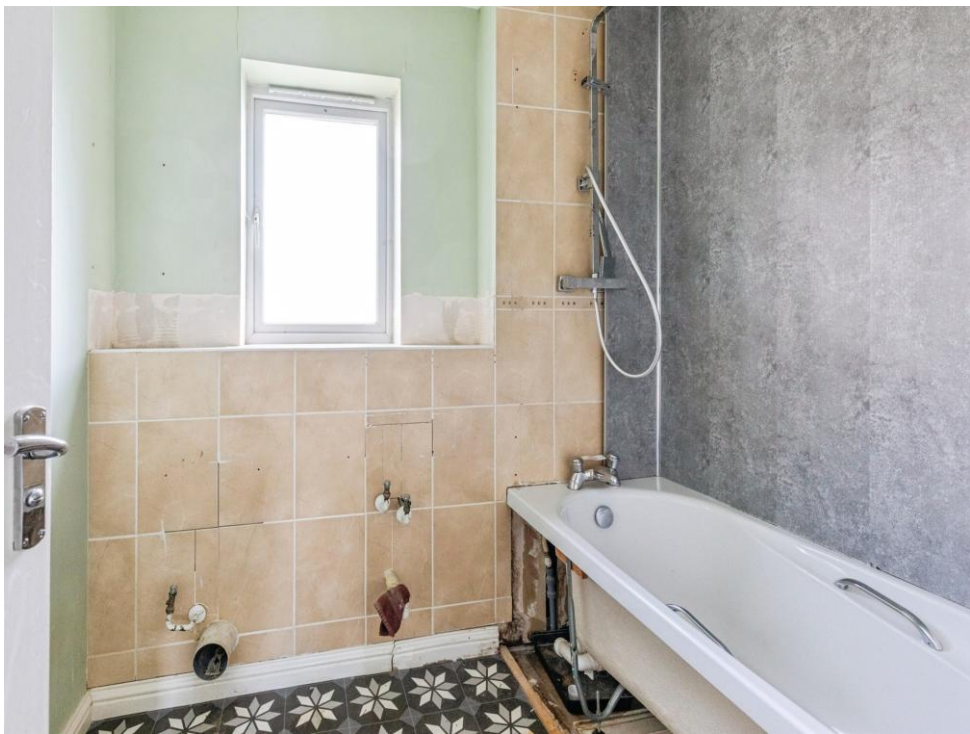
Bedroom Four

Double glazed window to front elevation and radiator.

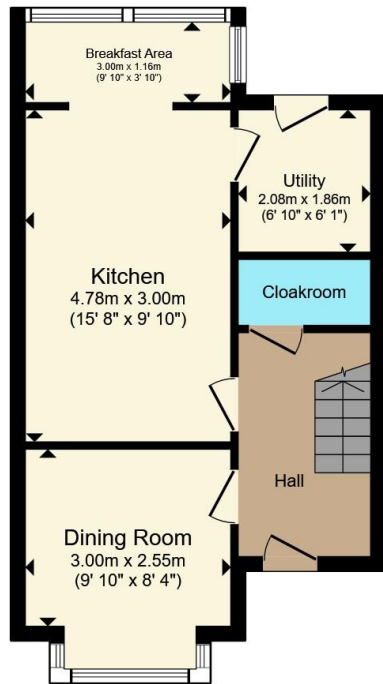
Bathroom

Double glazed window to rear elevation.

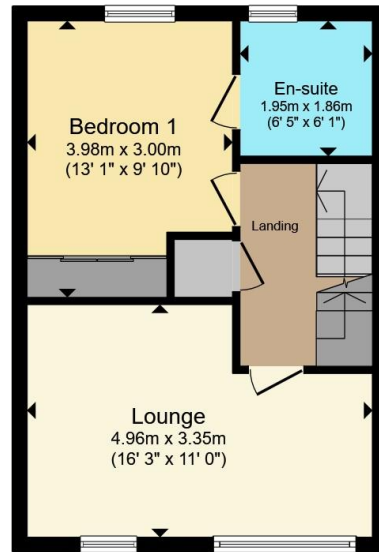




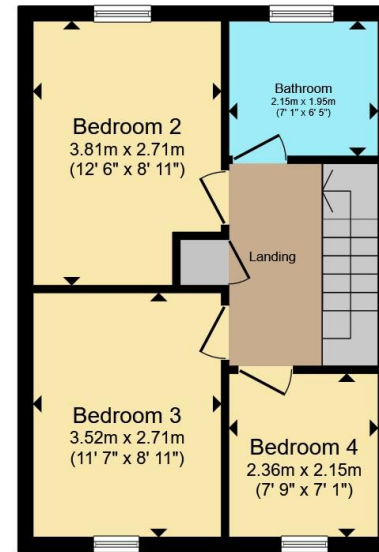




Ground Floor



First Floor



Second Floor

Total floor area 113.4 m² (1,221 sq.ft.) approx

This floor plan is for illustrative purposes only. It is not drawn to scale. Any measurements, floor areas (including any total floor area), openings and orientation are approximate. No details are guaranteed, they cannot be relied upon for any purpose and they do not form part of any agreement. No liability is taken for any error, omission or misstatement. A party must rely upon its own inspection(s). Powered by www.propertybox.io



To view this property please contact Connells on

T 01933 312 363
E rushden@connells.co.uk

66 High Street
 RUSHDEN NN10 0PJ

EPC Rating: C Council Tax Band: D

Tenure: Freehold

view this property online connells.co.uk/Property/RDN406064



1. MONEY LAUNDERING REGULATIONS Intending purchasers will be asked to produce identification documentation at a later stage and we would ask for your co-operation in order that there will be no delay in agreeing the sale. 2. These particulars do not constitute part or all of an offer or contract. 3. The measurements indicated are supplied for guidance only and as such must be considered incorrect. Potential buyers are advised to recheck measurements before committing to any expense. 4. We have not tested any apparatus, equipment, fixtures, fittings or services and it is in the buyers interest to check the working condition of any appliances.

Connells Residential is registered in England and Wales under company number 1489613, Registered Office is Cumbria House, 16-20 Hockliffe Street, Leighton Buzzard, Bedfordshire, LU7 1GN. VAT Registration Number is 500 2481 05.

See all our properties at www.connells.co.uk | www.rightmove.co.uk | www.zoopla.co.uk

Property Ref: RDN406064 - 0004