



13 Kingsthorpe Avenue
Corby, NN17 2PZ



Simpson West

Conveniently situated within the much sought after Shire area of Corby, is this rarely available end of terrace property which offers features and accommodation to include gas central heating, double glazing, a reception hall, lounge with patio doors opening to the rear garden, fitted kitchen and dining room. The first floor provides TWO DOUBLE BEDROOMS, and a family shower room. Outside, there is an attractive enclosed frontage with off road parking for multiple vehicles, whilst the rear garden is of good size and is predominantly laid to lawn and bordered by mature shrubbery. An early visit is highly advised as the property represents excellent value and opportunity to further development and refurbishment. Energy Rating C. Council Tax Band A.

£179,950



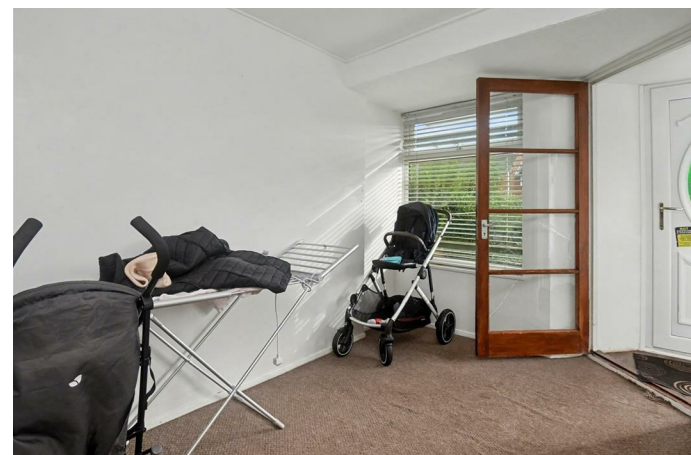
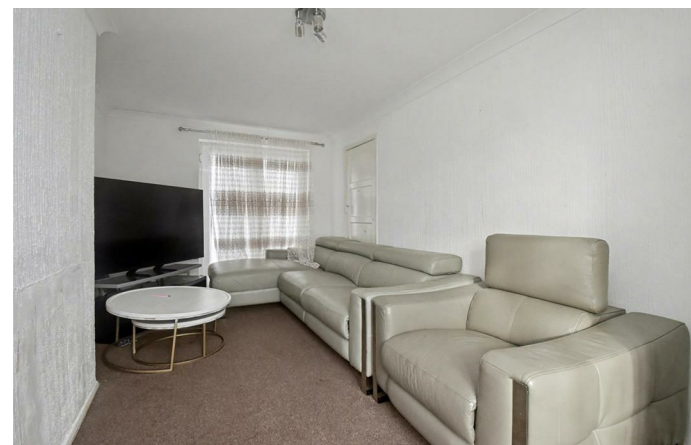
2



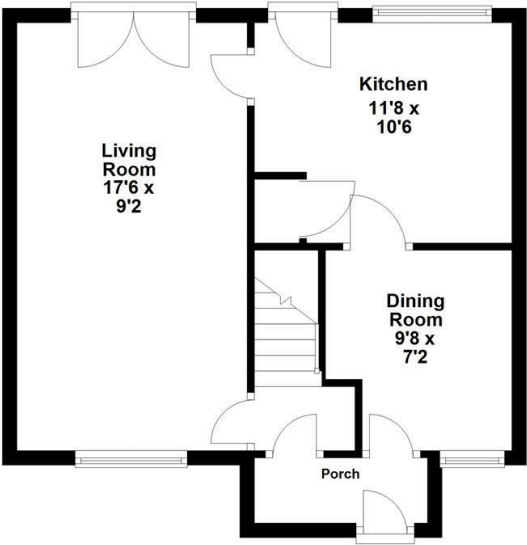
1



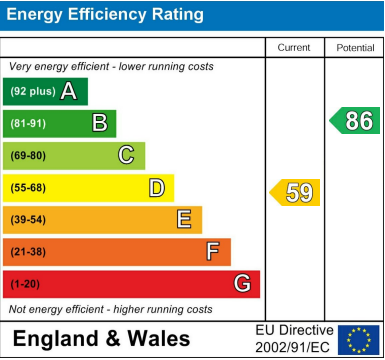
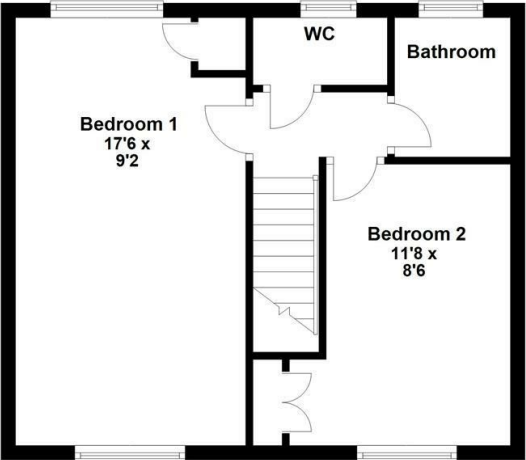
1



Ground Floor



First Floor



When you buy with Simpson West, you know **you'll be in safe hands**. From the moment you walk through our doors, we'll make you **feel truly welcome**. Our sales consultants and financial advisors will take you through **every step of the process**, offering **free expert advice** along the way, from help choosing the right mortgage and insurance through to finding your conveyancer. And if you need help selling your home too, **with over 20 years of local experience, you can trust us to get you moving**.



**Simpson
West**

Making Every
Journey Personal



01536 202007

info@simpsonwest.co.uk

<https://www.simpsonwest.co.uk/>

64 Corporation Street, Corby, Northants, NN17 1NH