



Osiers Road, SW18

£3,000 Per calendar month

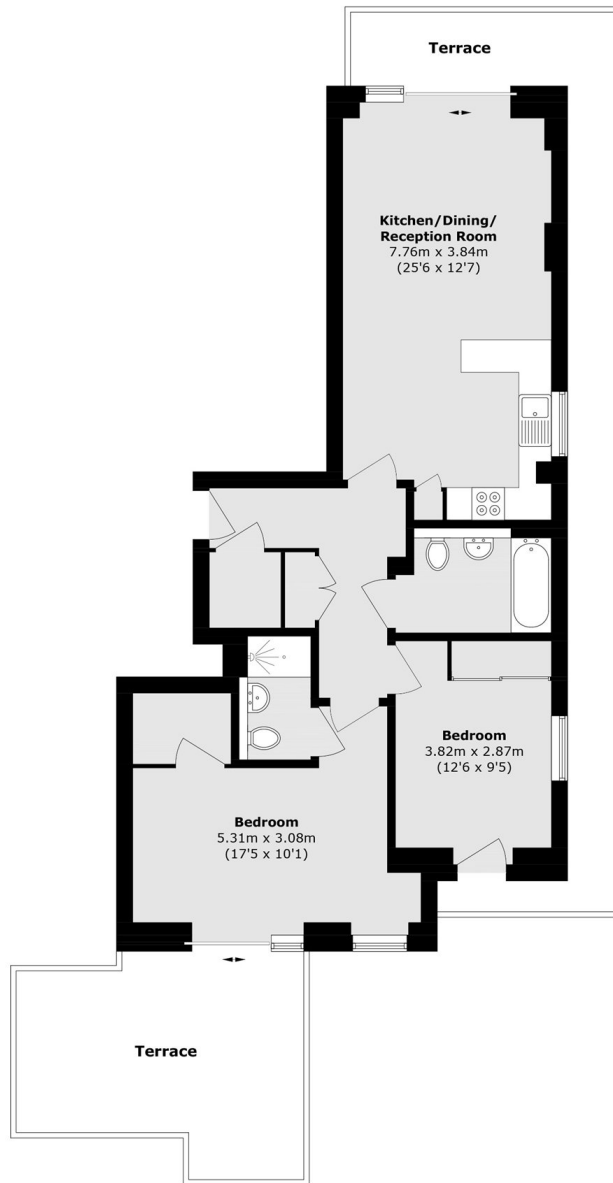
A well-presented two bedroom, two bathroom apartment set on the sixth floor of a modern development on Osiers Road. The property features an open-plan living room with excellent natural light, two terraces and allocated parking.

The apartment is superbly located moments from the River Thames and the amenities of Wandsworth. Transport links are excellent with Wandsworth Town Station providing fast connections into Central London.

Features

- Open-Plan Living
- Two Bedrooms
- Two bathrooms
- Roof Terrace
- Allocated Parking
- Modern Development

Osiers Road, London, SW18



Total area (approx.): 81.5 sq. m (877.2 sq. ft)
Terrace (approx.): 41.7 sq. m (448.8 sq. ft)