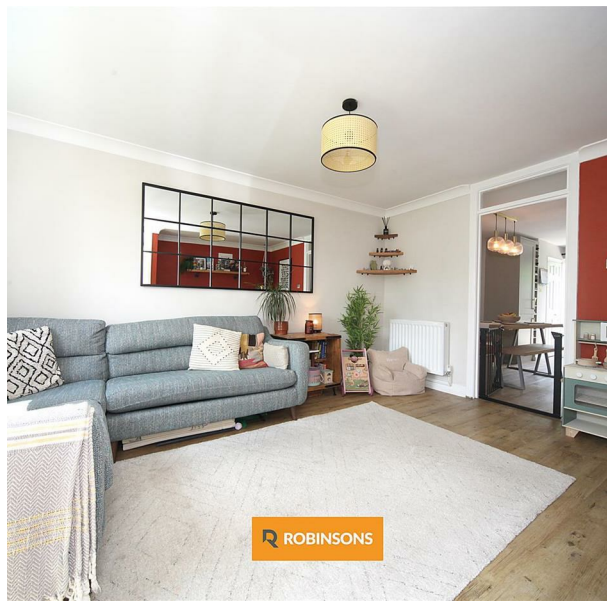


61 Knaves Hill, Leighton Buzzard, LU7 2SE
£350,000

ROBINSONS



A THREE BEDROOM TERRACED HOME IN THE HIGHLY SOUGHT AFTER AREA OF LINSLADE, LEIGHTON BUZZARD, OFFERING MODERN LIVING THROUGHOUT WITH A RECENTLY FITTED KITCHEN LESS THAN SIX MONTHS OLD, ALL WITHIN EASY WALKING DISTANCE OF THE TRAIN STATION, TOWN CENTRE AND GRAND UNION CANAL.

Positioned in the highly sought after Linslade area overlooking Linslade Woods, this well presented three bedroom home is ideal for families, professionals and commuters alike. Offered with an agreed upper chain, the property is ready to move straight into and helps support a smoother onward move.

The accommodation is well laid out, beginning with a welcoming entrance porch leading into a bright and spacious living room. From here, the hallway provides access to a convenient ground floor WC before opening into the impressive kitchen diner, which was newly fitted less than six months ago. Finished with contemporary units, integrated appliances and generous dining space, it forms the heart of the home and enjoys direct access to the rear garden.

Outside, the low maintenance rear garden provides a private space for relaxing or entertaining, with gated access leading to off road parking on a shingle driveway.



Total Area: 85.1 m² ... 916 ft²

Floorplan produced by Woodside Photography
 Floorplan is for illustration purposes only and all measurements are approximate



20 West Street
 Dunstable
 Bedfordshire
 LU6 1SX
 01582 661112
sales@robinsons-estates.co.uk
<https://www.robinsons-estates.co.uk>

