
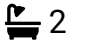





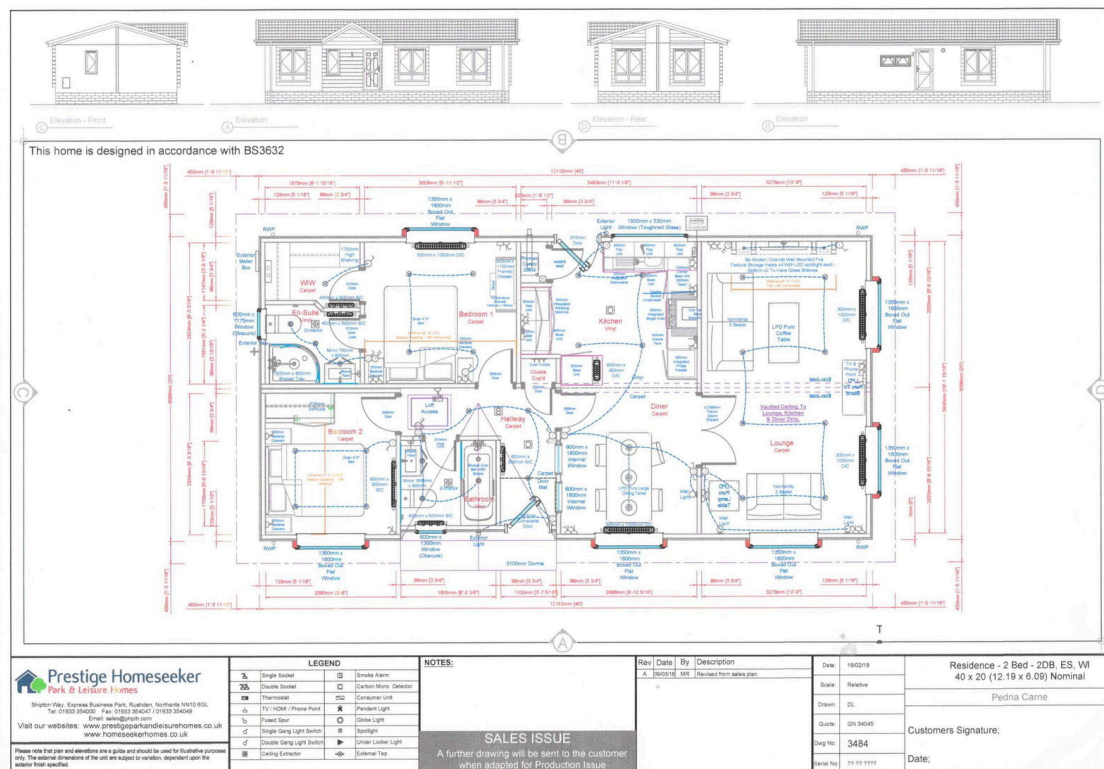
Kew Pennmena, Higher Fraddon, TR9

Offers In Region Of £172,000

 2  2  1



- 2 large double bedrooms – Master En-Suite and walk in wardrobe.
- Expansive, bright and airy
- Superb elevated position with panoramic coastal views across Cornwall
- Beautifully decorated throughout
- Garden and driveway parking
- Park Home – Over 45's
- Fully furnished
- NO ONWARD CHAIN
- Fantastic living space
- Like new!



LUXURY living! Exquisite 2-bedroom park home, boasting expansive and stunning views across Cornwall! Established in 2018 and occupied for just 2 years, it presents as new. Set in an elevated position, it features panoramic vistas, UPVC double glazing, and gas central heating. The home's spacious interior is accentuated by vaulted ceilings and large windows, with a modern, clean aesthetic achieved through muted, soft tones. It includes two double bedrooms, with the master bedroom offering an en-suite shower room and walk-in wardrobe, all adorned in calming hues of taupe, cream, grey, and silver chrome. Outside, enjoy a private driveway,



stunning rural and coastal views, and various landscaping and storage options. Available CHAIN FREE, a viewing is highly recommended to fully appreciate this luxurious and charming park home.