



**Treetops**

**RENDELLS**

# Treetops

Moor Road, Staverton, Totnes, TQ9 6PB

This impressive detached two-bedroom bungalow occupies a prominent position within the street and has been modernised to a high standard throughout. Benefitting from ample driveway parking and a garage, the accommodation comprises a spacious lounge/diner, a well-appointed kitchen with breakfast area, two well-proportioned bedrooms, a shower room and a separate W.C.

## Guide Price of £350,000

### The Situation

The property enjoys a peaceful setting in the charming village of Staverton, nestled within the beautiful South Devon countryside only a few miles outside Totnes and Dartington. Surrounded by rolling hills, woodland and the stunning River Dart Valley, it offers an excellent opportunity to enjoy one of Devon's most picturesque locations.

From the doorstep, there is access to a wealth of walking opportunities, including riverside paths along the River Dart, woodland trails through Staverton Nature Reserve, and scenic routes connecting Staverton, Dartington, Totnes and the wider Dart Valley. The property is within walking distance of the South Devon Railway and Staverton steam train station.

Just a short drive away, the vibrant market town of Totnes provides an excellent selection of independent shops, cafés, restaurants, galleries and a popular weekly market. Dartington Hall Estate, Sandridge Barton and the many attractions of the South Hams are all within easy reach.

### The Accommodation

#### Entrance Hall

A welcoming entrance hall provides access to all principal rooms within the property and offers useful space for coats and footwear.

#### Lounge/Diner

The lounge/diner is a generously proportioned room with dual-aspect windows allowing an abundance of natural light to flood the space. A fitted carpet and feature gas fire create a warm and inviting atmosphere, whilst ample power points provide practicality.

#### Kitchen/Breakfast Room

The spacious galley-style kitchen is finished in neutral tones and benefits from granite-effect worktops and matt off-white shaker-style cabinetry. The wooden flooring continues from the hallway into the kitchen, creating a seamless flow throughout the space.

The kitchen is fitted with a range of integrated appliances including an eye-level oven, induction hob, stainless steel extractor fan, fridge/freezer and dishwasher. There is also an informal breakfast area positioned beside a large window, making it an ideal spot to enjoy the surrounding outlook.



A useful utility cupboard houses the washing machine, and a side door provides access to both the front and rear of the property.

### **Principal Bedroom**

The principal bedroom is well proportioned and offers ample space for wardrobes and additional furniture. Overlooking the rear garden, the room enjoys a pleasant outlook and a high degree of privacy. The room is carpeted and benefits from a range of power points.

### **Bedroom Two**

A further generously proportioned double bedroom, ideal as guest accommodation, a second bedroom or a home office if required.

### **Shower Room**

Comprising a corner shower enclosure with electric shower, hand wash basin and vanity storage unit beneath.

### **Separate W.C.**

Conveniently positioned adjacent to the shower room, the separate W.C. provides additional flexibility for visiting guests and everyday use.

### **The Grounds**

#### **Gardens & Garage**

Approached via a generous driveway, the property occupies a wonderfully sized plot. To the front is an extensive L-shaped driveway providing ample parking and ease of maneuvering for multiple vehicles. The driveway leads to a single garage benefitting from power and lighting, with a rear access door opening into the garden.

The front garden is laid principally to lawn and complemented by mature shrubs and planting, providing both privacy and kerb appeal. A side pathway leads to the kitchen entrance and continues to the rear garden.

The rear garden is of an excellent size and arranged over two tiers, offering a manageable and attractive outdoor space from which to enjoy the far-reaching views across the surrounding countryside.

Areas of lawn and established planting sit either side of the steps leading to the upper terrace, whilst patio seating areas on both levels provide ideal spaces for outdoor dining and entertaining. Mature trees and established boundaries create a private and tranquil setting.

### **Additional Information**

#### **Council Tax**

Band D.

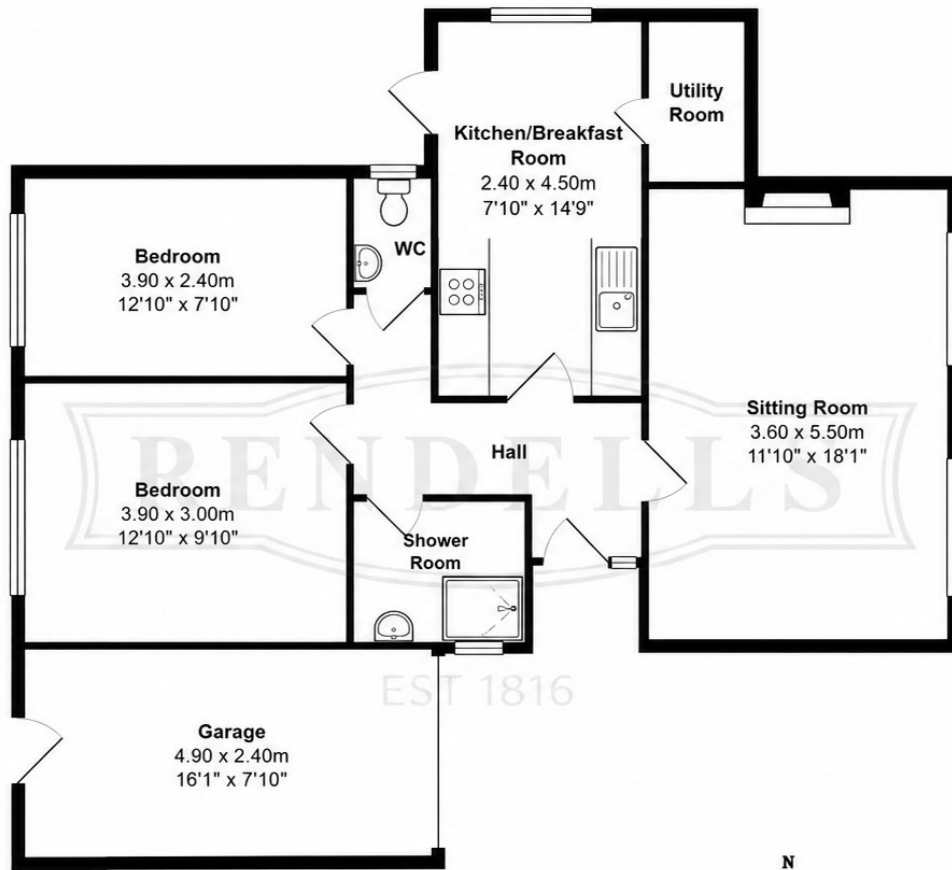
#### **Tenure**

Freehold.

#### **Services**

Mains water, mains electricity, mains drainage and oil-fired central heating.





Total Area: 66.9 m<sup>2</sup> ... 720 ft<sup>2</sup> (excluding garage)



### Local Authority

South Hams District Council, Follaton House, Plymouth Road, Totnes, Devon, TQ9 5NE.

### Viewing Arrangements

Strictly by appointment through Rendells Totnes Estate Agents.

### Mileages

Dartington Hall Estate 2 miles approx., Totnes 3 miles approx., Sandridge Barton Vineyard 4 miles approx., Ashprington 4 miles approx., Dartmouth 12 miles approx., Blackpool Sands 14 miles approx., Salcombe 20 miles approx., Plymouth 25 miles approx., Exeter 30 miles approx.

Nearest Train Station: Totnes Railway Station 3 miles approx. (journey time approximately 2 hours 45 minutes to London Paddington plus South Devon Railway access to Totnes)

### Directions

From Totnes town centre, follow the B3387 towards Dartington and Staverton. Continue for approximately 3 miles, passing through Dartington before crossing the River Dart into Staverton village. Turn onto Moor Road and continue a short distance to reach Tree Tops.

For satellite navigation, please use postcode TQ9 6PB.

### Consumer Protection from Unfair Trading Regulations 2008

- 1) These particulars are set out for the interested parties and purchasers as a guideline only. They are intended to give a fair description but not to constitute an offer or contract.
- 2) All descriptions, dimensions, distances, orientations and other statements/facts are given in good faith but should not be relied upon as being a statement or representation of facts.
- 3) Nothing in these particulars shall be deemed to be a statement that the property is in good condition or otherwise nor that any services are in good working order. The agent has not tested any apparatus, equipment, fixtures and fittings or services and so cannot verify that they are in working order or fit for their purpose. Interested applicants are advised to make their own enquiries and investigations before finalizing their offer to purchase.
- 4) The photographs appearing in these sales brochures show only certain parts and aspects of the property at the time the photographs were taken. Aspects may have been changed since the photographs were taken and it should not be assumed that the property remains precisely as displayed in the photographs. Items shown in photographs are not included unless specifically mentioned within the sales particulars. They may however be available by separate negotiation.
- 5) Any area measurements or distances referred to herein are approximate only.
- 6) Where there is reference in these particulars to the fact that alterations have been carried out, or that a particular use is made of any part of the property, this is not intended to be a statement that any necessary planning, building regulations or other consents have been obtained and these matters must be verified by any intending purchaser.
- 7) Descriptions of a property are inevitably subjective and the descriptions contained herein are used in good faith as an opinion and not by way of statement of fact. If there are any points of particular importance that need clarifying before viewing please do not hesitate to contact this office.
- 8) References to the tenure of a property are based on information supplied by the seller. The agent has not had sight of the title documents. A buyer is advised to obtain verification from a solicitor and before finalizing their offer should make their own enquiries and investigations. Buyers should check the availability of any property

57 Fore Street, Totnes, Devon TQ9 5NL

Tel: 01803 863888

Email: [totnes@rendells.co.uk](mailto:totnes@rendells.co.uk)



[www.rendells.co.uk](http://www.rendells.co.uk)

