



## Walworth Road, SE17

£1,725 Per calendar month

A one-bedroom flat offering simple, open-plan living. The property comprises a reception area with an open-plan kitchen. The bedroom is spacious and well-proportioned, while the bathroom is fully tiled with standard fittings.

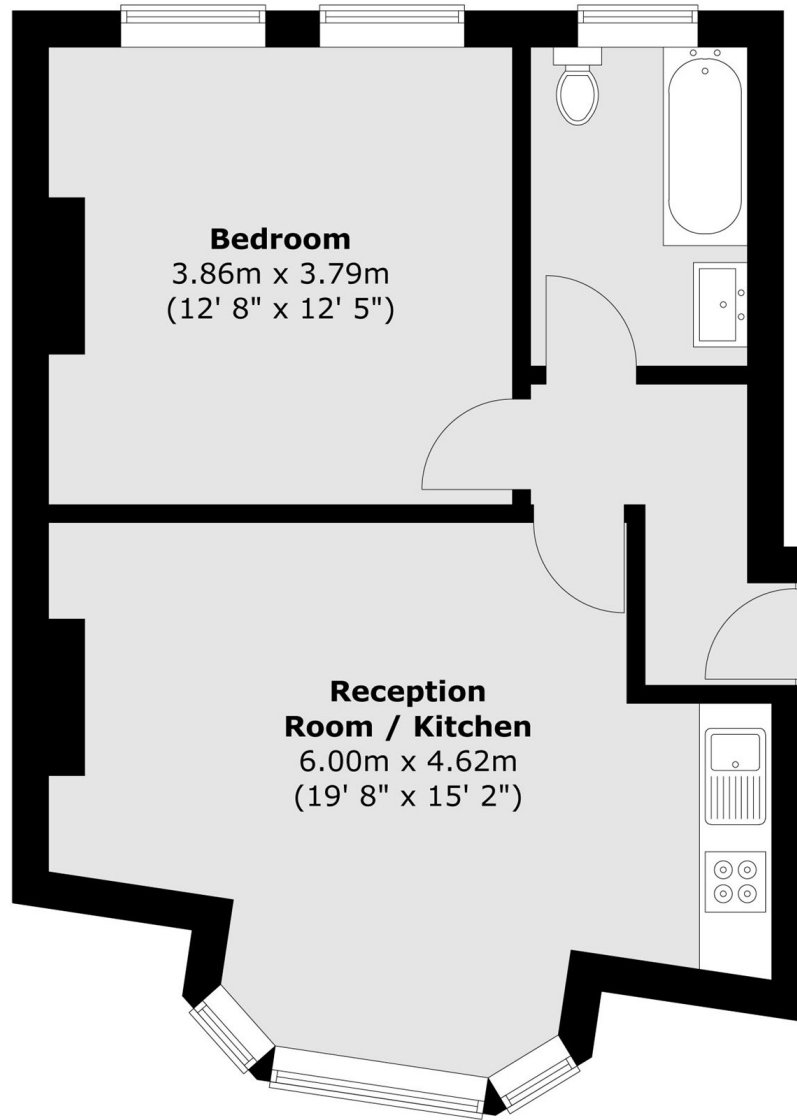
Ideally situated, the flat is just a short walk from Elephant and Castle station, providing excellent transport links. Regular bus services into The City make commuting easy, while the surrounding area offers a vibrant mix of shops, cafes, and amenities.

### Features

- One Bedroom Flat
- Modern Bathroom
- Open Plan
- Spacious Rooms
- Available ASAP
- Great Location

**Walworth Road,  
London, SE17**

**Second Floor**



Total area (approx.) : 46.1 sq. m (496 sq. ft)