



## Two Bedroom End of Terrace Victorian House Fairfield East, Kingston Upon Thames. £500,000 Freehold

A Charming Victorian Cottage with Exceptional Potential

Nestled within a highly sought-after cul-de-sac, just moments from Fairfield Park and an excellent selection of local amenities, this delightful end-of-terrace Victorian cottage presents a rare opportunity to create a truly exceptional home.

Brimming with character and period charm, the property offers two generous double bedrooms and is available with no onward chain.

Requiring full modernisation throughout, it provides the perfect blank canvas for buyers looking to renovate and personalise to their own taste.

Further enhancing its appeal is the exciting potential to extend, subject to the necessary planning permissions (STPP), along with a beautifully sized 60ft private rear garden, offering excellent outdoor space for entertaining, family living or future expansion.

A wonderful opportunity to acquire a characterful period home in a desirable location with outstanding scope to add value and create your dream home.

[WWW.STACKANDBONNER.COM](http://WWW.STACKANDBONNER.COM)

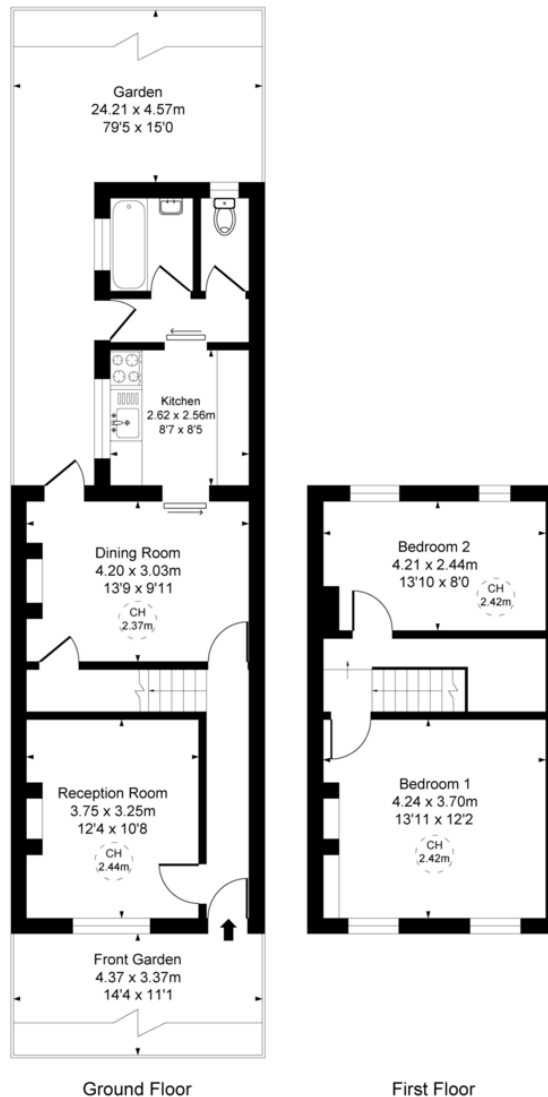
020 8974 8844

[sales@stackandbonner.com](mailto:sales@stackandbonner.com)



Fairfield East, Kingston Upon Thames KT1

Approximate Gross Internal Area  
81.34 sq m / 876 sq ft  
(CH = Ceiling Heights)



This plan is not to scale. It is for guidance and not for valuation purposes.  
All measurements and areas are approximate only, and have been prepared in accordance with the current edition of the RICS Code of Measuring Practice.

- Two Double Bedrooms
- Sought After Cul-De-Sac Location
- Potential to Extend S.T.P.P
- Two Separate Reception Rooms
- Full Modernisation Required, Stripped and Ready to Go
- 60' Private Rear Garden
- Ground Floor Bathroom / W.C
- Bags Of Original Character Features Through Out
- Sold With No Onward Chain