

**Abbots Park, Tulse Hill, SW2**

2 bedroom maisonette for sale

**£400,000**

Leasehold

## Property Details

This two bedroom first floor maisonette with a private garden is located on Abbots Park, close to Brockwell Park and within walking distance of Tulse Hill train station. The reception room features bespoke cabinetry and shelving in the alcoves, a bay window allowing plenty of natural light, and sleek flooring throughout. The kitchen offers contrasting blue and white gloss cabinetry with integrated white goods, complemented by sleek worktops and space for a breakfast table. The principal bedroom is quietly positioned at the rear of the property, while the second bedroom provides flexibility for use as a guest room, home office, or nursery. The modern bathroom includes a bath with an overhead shower and contemporary finishes. Externally, the property benefits from a private garden, providing a practical outdoor space ideal for relaxing or entertaining.

Council tax band C    EPC rating C (70)

## Features

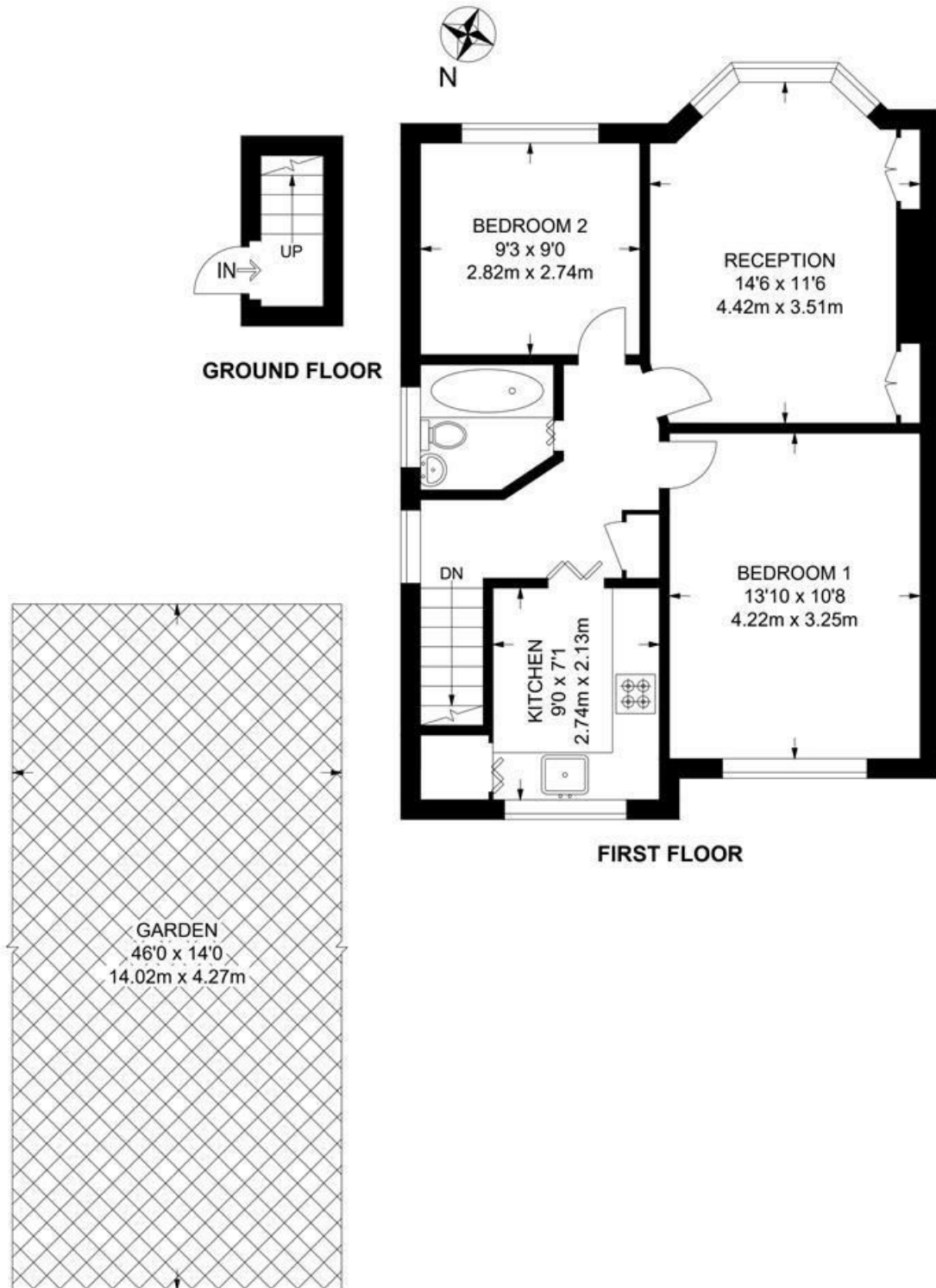
- Two bedrooms
- Private garden
- Bright and airy throughout
- Amenities in every direction
- 9-minute walk to train station
- 6-minute walk to Brockwell Park
- Walking distance to Brixton, Herne Hill and Tulse Hill town centres
- Chain-free



Abbots Park, Tulse Hill, SW2

**Abbots Park, SW2**  
**2 Bedroom Flat**

APPROXIMATE GROSS INTERNAL AREA: **609 SQ FT / 56.6 SQ M**



Abbots Park, Tulse Hill, SW2

