



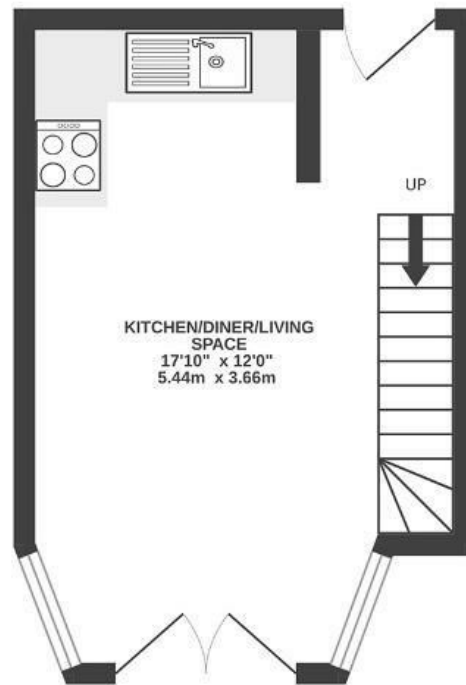
Bushy Park

TOTTERDOWN

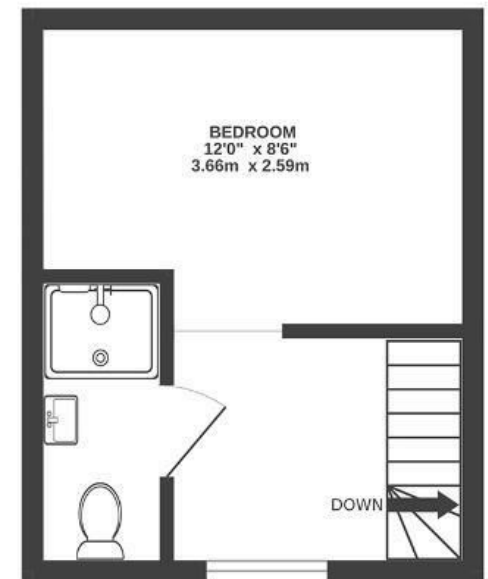
APPROXIMATE FLOOR AREA
36 SQM / 380 SQFT



GROUND FLOOR
199 sq.ft. (18.5 sq.m.) approx.



1ST FLOOR
181 sq.ft. (16.8 sq.m.) approx.



Boardwalk

5 Bushy Park

KNOWLE,

£

£200,000

zZz

1 Bedrooms



BS4 4EG



1 Bathrooms

"Well kept and with it's private garden, this flat is in the heart of Totterdown and is ideal for anyone looking for a hassle-free move, as it comes with no chain."

