



## Westbourne Park Villas, W2

£550,000

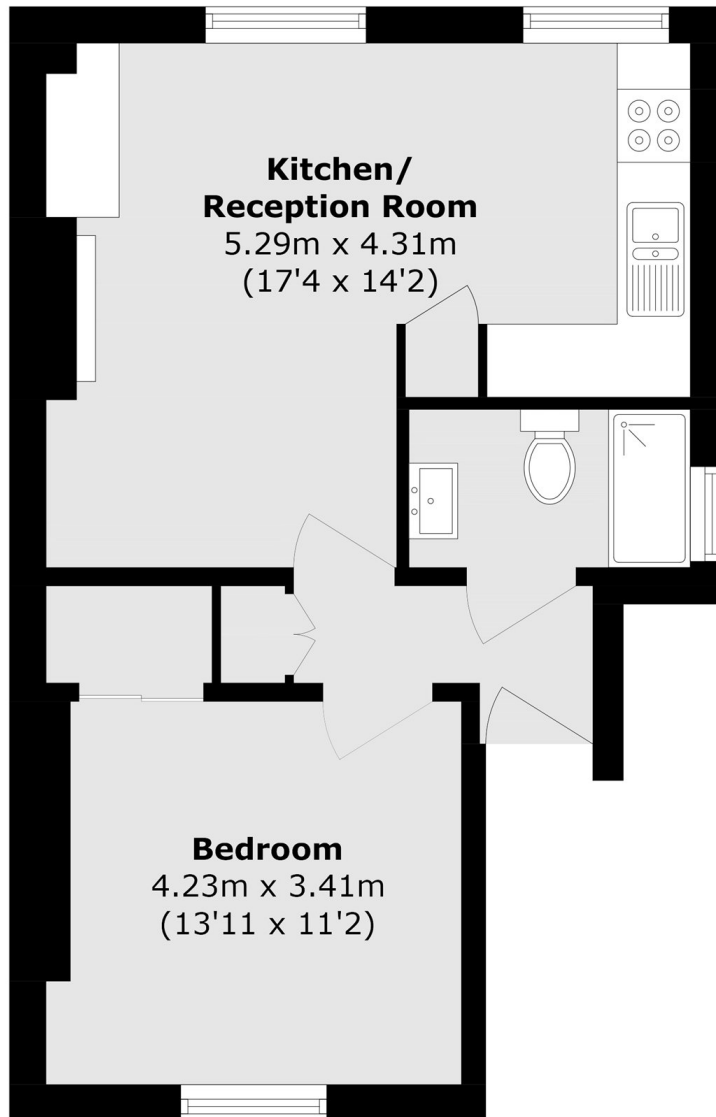
A well-presented first floor flat in a semi-detached Victorian villa with high ceilings and large windows. To the front is the open plan kitchen and reception with room to dine and to the rear a spacious double bedroom with built-in storage and the bathroom.

Westbourne Park Villas is ideally located in Notting Hill, within easy walking distance of the shops and boutiques on Westbourne Grove and Portobello Road. Westbourne Park and Royal Oak stations are close by and The Cow is the neighbourhoods favourite pub.

### Features

- One Double Bedroom
- First Floor
- High Ceilings
- Open Plan
- Victorian Conversion
- Notting Hill

# Westbourne Park Villas, London, W2



Total area (approx.): 38.9 sq. m (418.7 sq. ft)