

Long Street, E2

£550,000

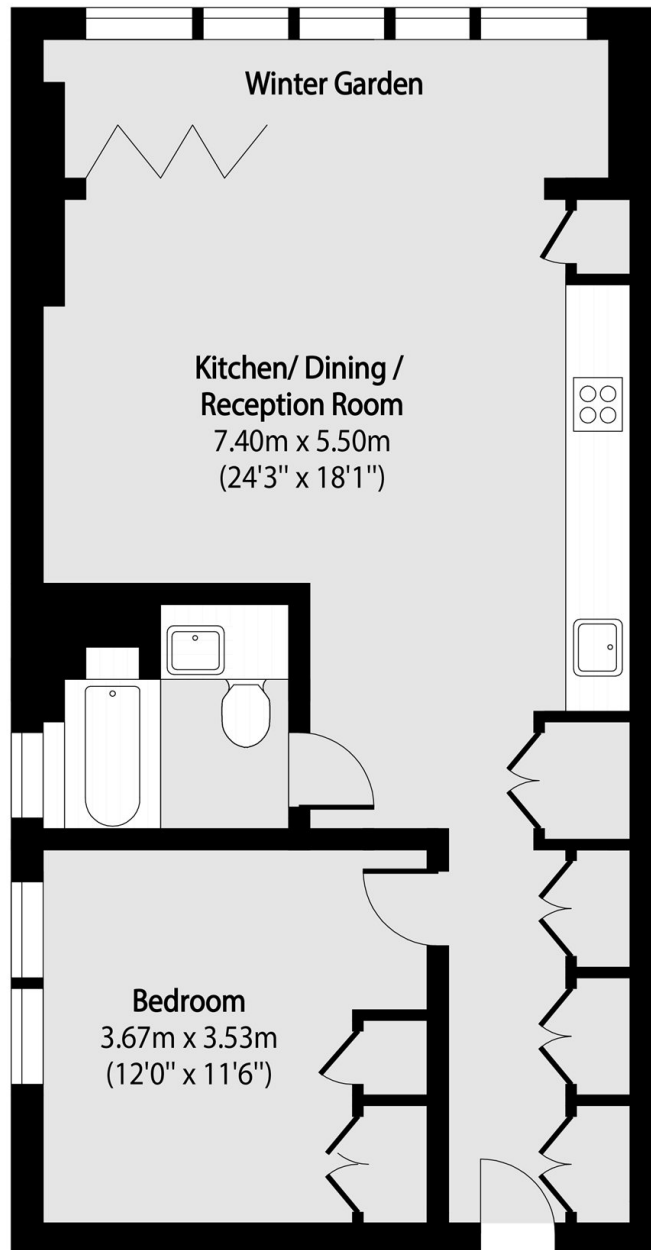
Large one bedroom apartment in the pinnacle building of the sought after Long & Waterson development. The apartment has a spacious open plan living room with ample space to dine and a stylish, fully integrated kitchen, this area leads onto the properties large winter garden which can either be closed off to make a private space or opened up to become an extension to the living area. The apartment has a large bedroom with built in wardrobes, plenty more storage can be found in the hall as well as the modern bathroom. The entire property benefits from generous natural light made possible by its floor to ceiling windows throughout.

Residents of the Long & Waterson development get access to private facilities such as a gym, sauna and steam rooms, 24hr concierge, cinema room and a variety of gardens and a residents lounge. This location is within short walking distance of major transport hubs such as Liverpool Street station. Home to Cross rail with direct lines to Heathrow Airport, Central Line, Hammersmith and City and national rail services.

Features

- Share of freehold
- Large one bedroom property
- Winter Garden
- Bright interiors
- Gated Community
- Residents Facilities

Long Street, LONDON, E2



Total area (approx): 60.75 sq m (654 sq. ft)

(Including Winter Garden)