

Copper Coin, Tower Way, Abergele, Conwy, LL22 7AY

£260,000

3 1 2

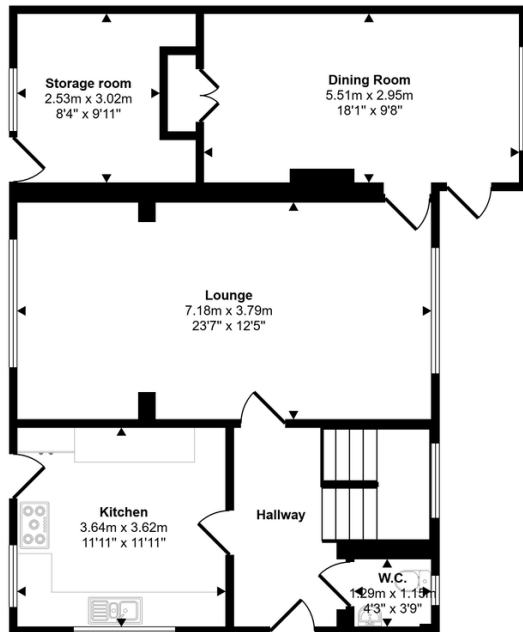


Situated in a quiet and sought after location alongside the River Gele, sits this unique three bedroom dormer bungalow which provides spacious accommodation. With private gardens to the front and rear of the property. The property comprises of a kitchen/breakfast room, a large spilt level lounge, separate dining room, three double bedrooms, downstairs cloakroom and family bathroom. The property also benefits from gated off road parking, a garage and a useful storage room. Within a few minutes walk of schools for all ages, two parks, leisure facilities, the high street and a supermarket. The property is also conveniently positioned close to local bus routes and the A55 Expressway, making it ideal for commuting or exploring the beautiful North Wales coastline.

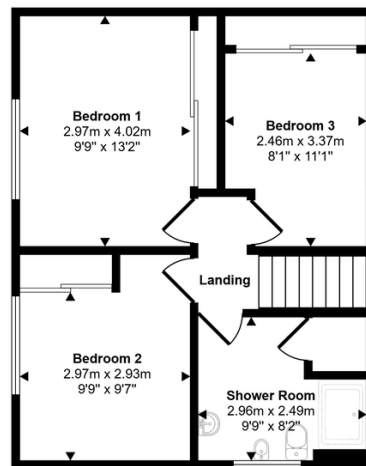
Key Features

- Detached dormer Bungalow
- Spacious and split level lounge
- Front and rear enclosed and private gardens
- Close to amenities
- EPC - D
- Three double bedrooms
- Second reception room
- Quiet location
- Freehold
- Council Tax - D

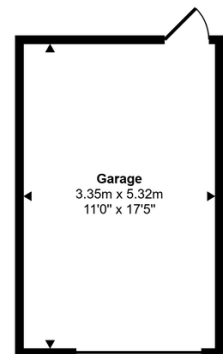
Approx Gross Internal Area
148 sq m / 1589 sq ft



Ground Floor
Approx 83 sq m / 889 sq ft



First Floor
Approx 47 sq m / 508 sq ft



Garage
Approx 18 sq m / 192 sq ft

This floorplan is only for illustrative purposes and is not to scale. Measurements of rooms, doors, windows, and any items are approximate and no responsibility is taken for any error, omission or mis-statement. Icons of items such as bathroom suites are representations only and may not look like the real items. Made with Made Snappy 360.