



WETHERELL
MAYFAIR'S FINEST PROPERTIES



MOUNT STREET, W1K

£1,395 PER WEEK

A luxury top floor (with lift) one bedroom apartment with spectacular views across Berkeley Square. Located on the corner of Mount Street.

Located on the fourth floor, the apartment comprises of a large reception room with period features and has a feature turret above the reception room that has been designed for use as a snug and is accessed via a modern open staircase.

There is a separate integrated kitchen, spacious double bedroom with fitted storage, modern bathroom and separate second shower room.

MAYFAIR'S MOST HIGHLY REGARDED RESIDENTIAL STREET, MOUNT STREET IS CLOSE TO THE CONNAUGHT HOTEL, MOUNT STREET GARDENS AND THE BUSTLING BERKELEY SQUARE.

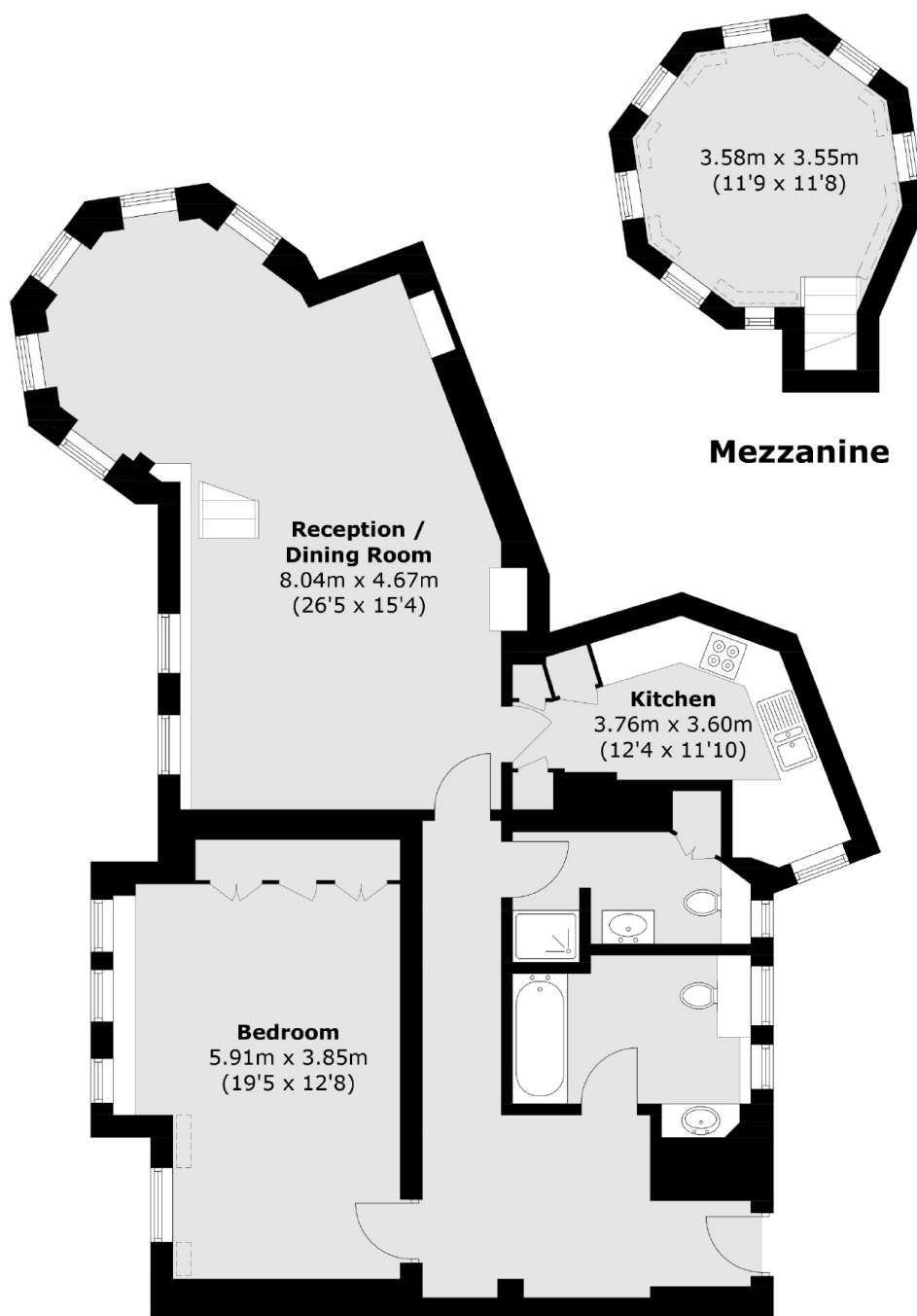


FEATURES

- One Double Bedroom • Additional Study / Snug Room • Two Bathrooms • Fourth Floor • Lift Access • Excellent Location •



MOUNT STREET, LONDON, W1K



Fourth Floor

Total area (approx.): 108.6 sq. m (1,168.9 sq. ft)
(Including Mezzanine)



WETHERELL
MAYFAIR'S FINEST PROPERTIES

102 Mount Street,
London, W1K 2TH

T: 020 7529 5588
E: rentals@wetherell.co.uk

We aim to make our particulars both accurate and reliable. However they are not guaranteed; nor do they form part of an offer or contract. If you require clarification on any points then please contact us, especially if you're traveling some distance to view. Please note that appliances and heating systems have not been tested and therefore no warranties can be given as to their working order.



wetherell.co.uk