



11 Thomas Edward Coard Building Cricklade Road  
Swindon

£125,000

mcfarlane



## 11 Thomas Edward Coard Building Cricklade Road

Swindon, Swindon

Spacious one-bedroom apartment with open-plan living, modern kitchen, bright dual-aspect windows, allocated parking, and excellent access to Swindon town centre and transport links.

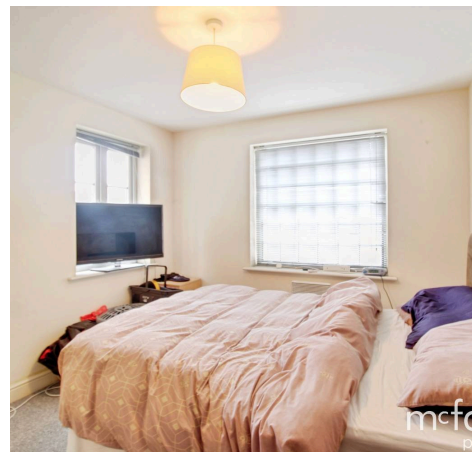
Council Tax band: A

Tenure: Leasehold

EPC Energy Efficiency Rating: E

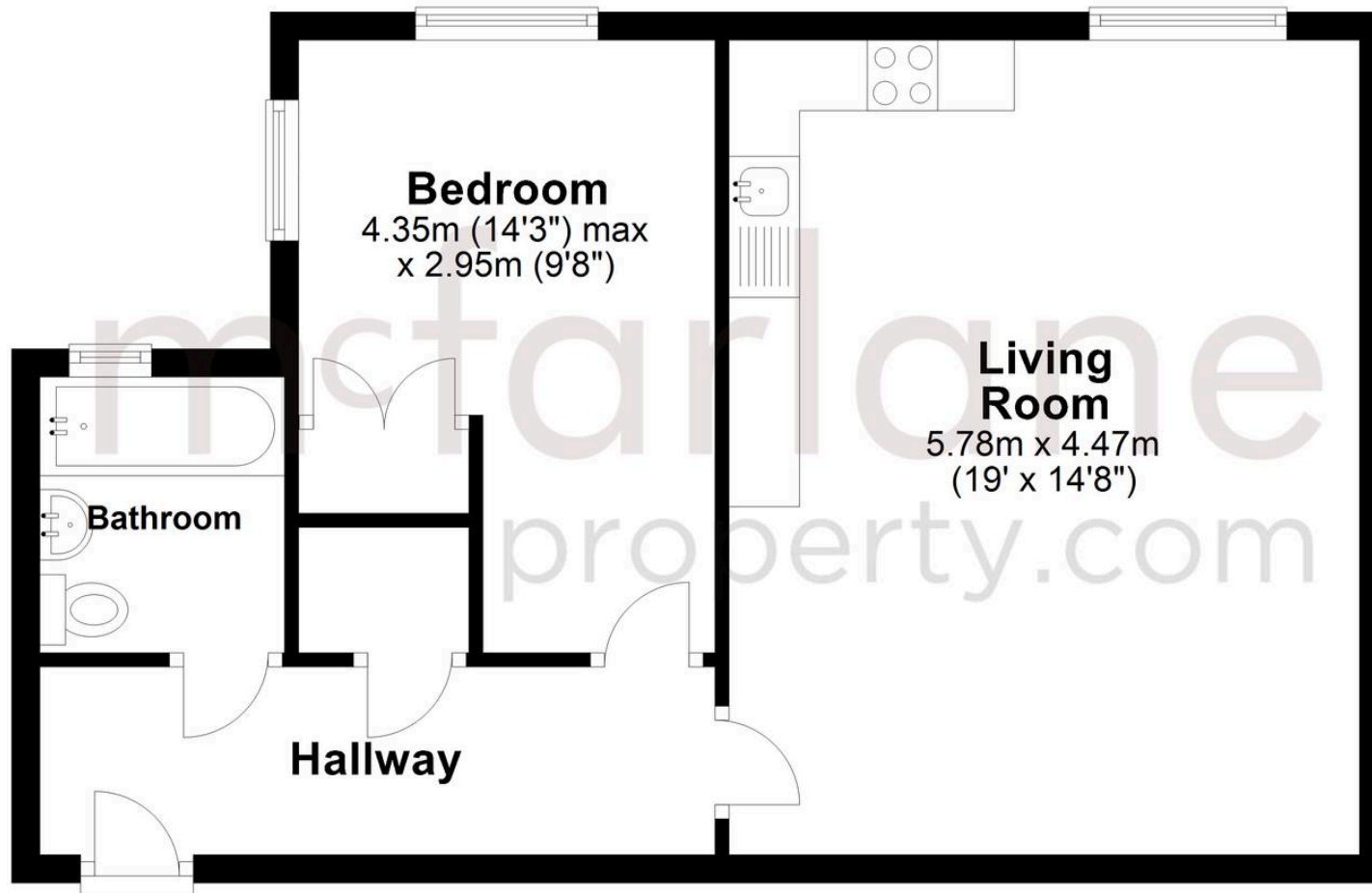
EPC Environmental Impact Rating: D

- SPACIOUS ONE-BEDROOM APARTMENT
- LARGE OPEN-PLAN KITCHEN LIVING AREA
- MODERN BATHROOM WITH SHOWER OVER BATH
- BRIGHT DUAL-ASPECT WINDOWS PROVIDING LOTS OF NATURAL LIGHT
- ALLOCATED PARKING SPACE INCLUDED
- CLOSE TO SHOPS, AMENITIES AND BUS ROUTES
- EASY ACCESS TO SWINDON TOWN CENTRE AND TRANSPORT LINKS
- IDEAL FOR FIRST-TIME BUYERS OR BUY-TO-LET INVESTORS



## First Floor

Approx. 49.7 sq. metres (535.3 sq. feet)



Total area: approx. 49.7 sq. metres (535.3 sq. feet)

## McFarlane Sales & Lettings

McFarlane Sales & Letting Ltd, 28-30 Wood Street - SN1 4AB

01793 611841 • [lettings@mcfarlaneproperty.com](mailto:lettings@mcfarlaneproperty.com) • [www.mcfarlaneproperty.com/](http://www.mcfarlaneproperty.com/)