



Lodge Park, Langham, Oakham, RUTLAND, LE15 7GZ

£199,950

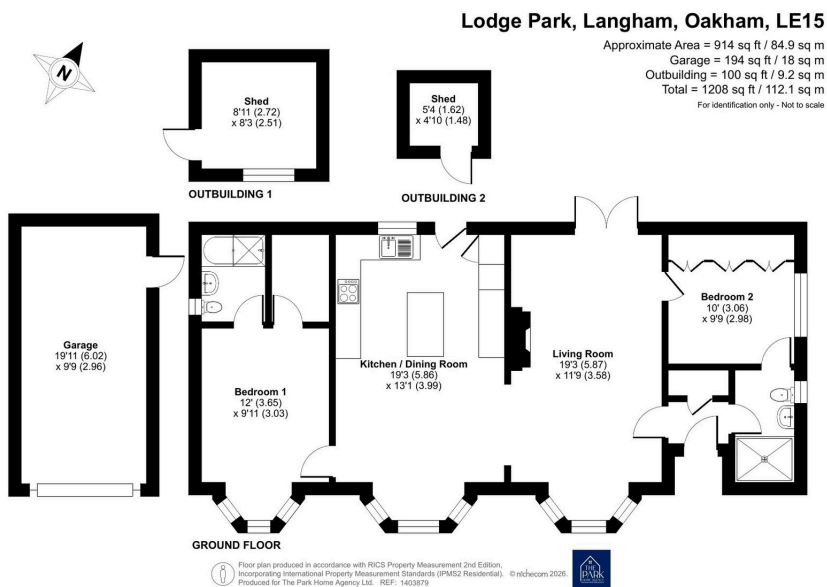
🛏️ 2 🚿 2 🚗 1



- Beautifully presented 46ft x 20ft residential park home
- Master suite with dressing room and en-suite bathroom
- Spacious living room with patio doors to the garden
- Breakfast bar island and integrated appliances
- Detached garage with electric door, power and light
- Two double bedrooms
- Second double bedroom with Jack & Jill shower room
- Fully refurbished fitted kitchen/dining room
- Wrap-around, low maintenance garden with raised patio
- New CH boiler installed August 2025



Set within the desirable Ranksborough Hall residential park home estate in the heart of the Rutland countryside, this beautifully presented 46ft x 20ft park home offers spacious and well-planned accommodation all on one level. The property features an entrance hall with storage, a bright living room with patio doors opening to the garden, and a fully refurbished fitted kitchen/dining room with breakfast bar and integrated appliances. There are two double bedrooms, including a master suite with dressing room and en-suite bathroom, and a second bedroom with Jack & Jill style shower room. Outside, the home benefits from a lawned frontage, block paved driveway, detached garage, and a low maintenance wrap-around garden with raised patio area and useful outbuildings. Early viewing is highly recommended.



01793 230185
 sales@theparkhomeagency.co.uk

Agents Notes: All measurements are approximate and quoted in metric with imperial equivalents and for general guidance only and whilst every attempt has been made to ensure accuracy, they must not be relied on. The fixtures, fittings and appliances referred to have not been tested and therefore no guarantee can be given that they are in working order. Internal photographs are reproduced for general information and it must not be inferred that any item shown is included with the property. For a free valuation, contact the numbers listed on the brochure