



smarthomes

Daffodil House, Elm Road

Blythe Valley, Solihull

- A Very Well Presented Two Bedroom First Floor Apartment
- Open Plan Lounge/Kitchen/Diner
- Family Bathroom
- Two Allocated Parking Spaces

£215,000

Current EPC Rating – C

Current Council Tax Band - C

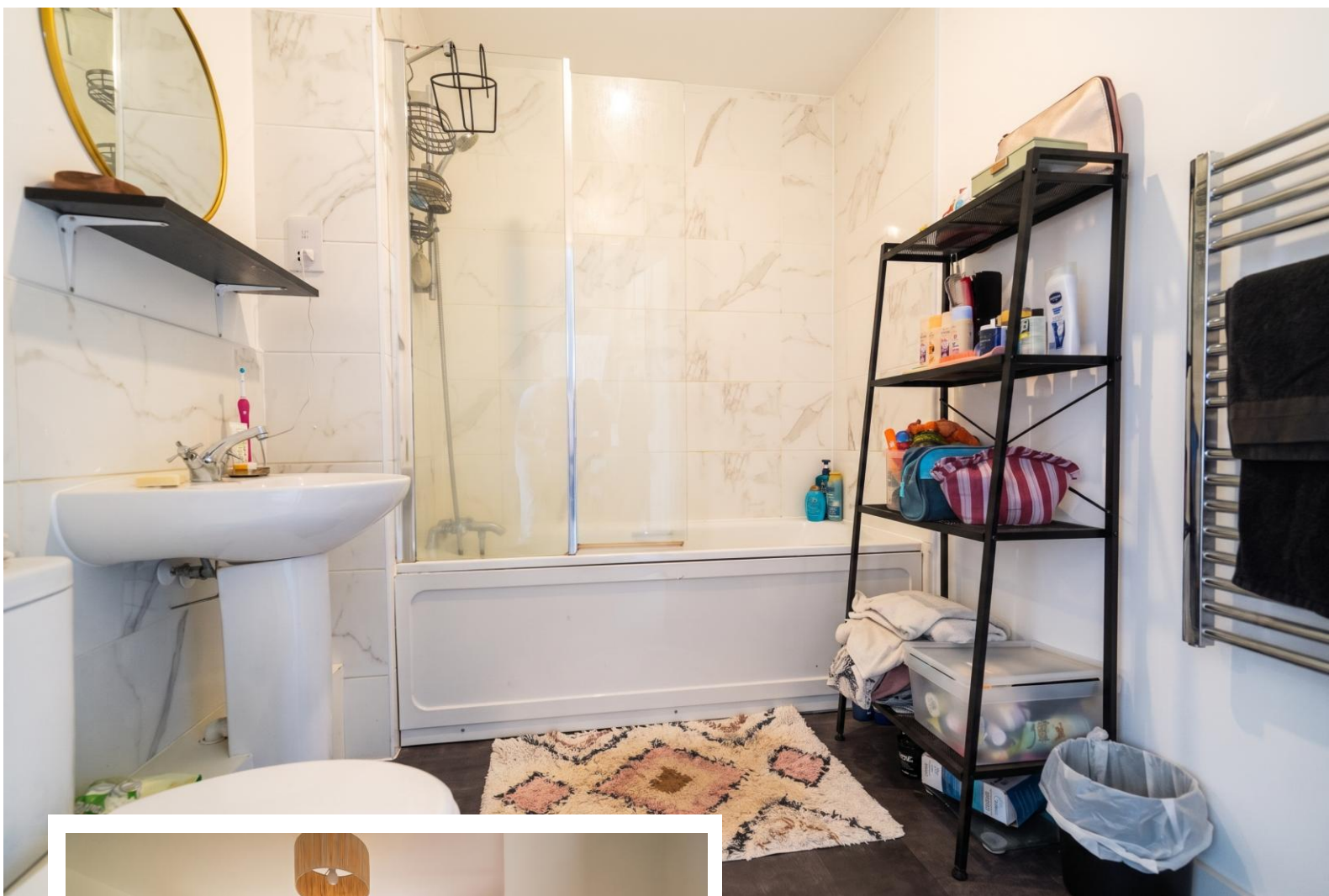




Property Description

A well presented and recently constructed first floor apartment situated in a most popular location offering accommodation comprising an open plan lounge/kitchen/diner, two good size bedrooms, family bathroom, two allocated parking spaces and 6 years remaining on the NHBC guarantee

Blythe Valley is situated on the edge of Cheswick Green, Monkspath and open countryside, with easy access to the M42 linking to the M6, M40, M1 and M5 motorways, NEC Genting Arena, Resorts World and Birmingham International Airport and Railway Station. A wide selection of shopping facilities can be found along the A34 Stratford Road in Shirley, Sears Retail Park on Marshall Lake Road and Solihull Town Centre offers an excellent choice of shops including Touchwood Shopping Centre and John Lewis Department Store. Local schools are sought after with this property currently falling within Tudor Grange Academy catchment.



Rooms & Measurements

Spacious Open Plan Lounge/Kitchen/Diner
6.78m x 3.78m max (22'3" x 12'5" max)

Bedroom One 3.4m x 3.02m (11'2" x 9'11")

Bedroom Two 3.53m x 2.11m (11'7" x 6'11")

Family Bathroom

Tenure

We are advised by the vendor that the property is leasehold with approx. 120 years remaining on the lease and an annual service charge of approx. £1,500.00. We would advise all interested parties to obtain verification through their own solicitor or legal representative. EPC supplied by Vendor. Current council tax band – C



316 Stratford Road
Shirley
Solihull
B90 3DN

www.smart-homes.co.uk
0121 744 4144

Agents Note: Whilst every care has been taken to prepare these particulars, they are for guidance purposes only. We believe all information to be correct from the day of marketing however, we advise and recommend that your conveyancer and or surveyor verifies all information supplied. All measurements are approximate are for general guidance purposes only and whilst every care has been taken to ensure their accuracy, they should not be relied upon and potential buyers are advised to recheck the measurements.