



19

21

Websters
estate agents

Court Way, Twickenham, TW2 7SA

Semi Detached 3 bedroom home in a popular residential area with a south facing garden, driveway parking and shared access to the garage. Situated just 0.3 miles from Twickenham town centre and mainline train station, within 0.4 miles of Richmond upon Thames and St Richard Reynolds Schools and 0.8 miles from Trafalgar, Chase Bridge and Orleans Schools.

With no onward chain and in need of some updating. Currently offering approx 1030sq ft of living space over 2 floors (excluding the garage) with some original features, built in storage, double glazed windows and doors and potential to extend, reconfigure the layout and loft convert (subject to Planning Permission and Building Regulations)

Entrance hallway with storage leads to the bay fronted living room, the fitted kitchen and the separate dining room at the rear. A door opens onto the garden with a patio, lawn, mature planting, shed and garage storage and a gate to the shared driveway.

On the first floor are 3 bedrooms, the bathroom, separate w.c and hatch access to loft storage

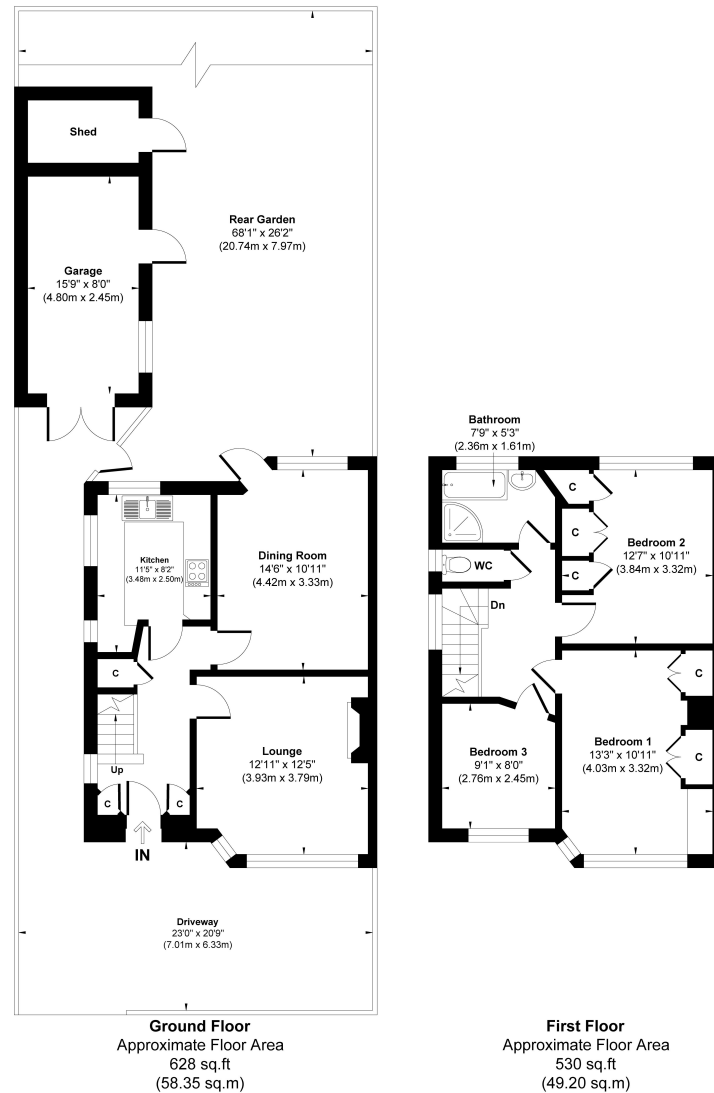
Located 0.4 miles from A316 with direct access to M3/M25 and central London and Craneford playing fields with a walking/cycle track along the river Crane to Crane Park and into Twickenham and access to Twickenham Green.

EPC Rating D

- Semi Detached 3 Bedroom Home
- South Facing Garden with Side Access
- No Onward Chain
- Potential to Extend and Loft Convert (stpp)
- Driveway Parking and Garage
- 0.3 Miles from Twickenham Station
- Close to Numerous Popular Schools



Court Way, TW2



**Approx. Gross Internal Floor Area 1158 sq. ft / 105.55 sq. m
(Including Garage)**

This Plan is for Guidance only. Not drawn to scale unless stated. Window and door openings are approximate. The services, system and appliances shown have not been tested and no guarantee as to their operability and efficiency can be given. Whilst every care is taken in the preparation of this plan. Please check all dimensions, shapes and compass bearings before making decisions reliant upon them.
Produced by designimperial.com

a Websters Estate Agents 36 Broad Street, Teddington, Middlesex TW11 8QY **t** 020 8614 6000 **e** sales@mywebsters.co.uk **w** mywebsters.co.uk

Disclaimer

These particulars, whilst believed to be accurate are set out as a general outline only for guidance and do not constitute any part of an offer or contract. Intending purchasers should not rely on them as statements of representation of fact, but must satisfy themselves by inspection or otherwise as to their accuracy. We have not carried out a detailed survey nor tested the services, appliances and specific fittings. Room sizes should not be relied upon for carpets and furnishings. The measurements given are approximate. No person in this firm's employment has the authority to make or give any representation or warranty in respect of the property.

