

FREEHOLD



House - Semi-Detached

# 58 BRYCEDALE CRESCENT, LONDON, N14 7EU

Offers Over

# £1,000,000

## FEATURES

- Chain Free
- In catchment of excellent Schools
- Four Bedrooms
- Three Receptions
- 1828 sq.ft
- West facing 80' Rear Garden
- Three Bathrooms
- Utility Room



# RASH & RASH

# 4 Bedroom House - Semi-Detached located in London

Situated on a quiet residential crescent in the sought Minchenden Estate, this substantial and well proportioned semi detached family home offers approximately 1,828 sq ft of internal space complemented by a generous rear garden and off-street parking.

The ground floor provides excellent living and entertaining space, featuring a bright and spacious reception room to the front alongside a second reception/dining room. To the rear, a large open plan kitchen/reception area forms the heart of the home, with direct access to the garden. Additional benefits include a utility room, guest cloakroom with shower and useful storage.

Upstairs, the first floor comprises four good sized bedrooms offering flexible accommodation for families or those needing home office space. A family bathroom serves the bedrooms and there is an en-suite bathroom to the main bedroom.

Externally, the property boasts a substantial 80' private west facing rear garden, suitable for entertaining and gardening while the front offers a driveway for several vehicles.

Call us on

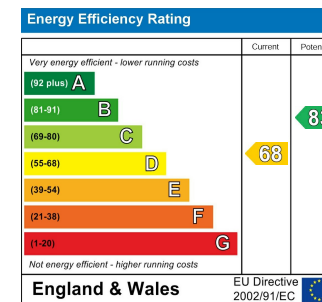
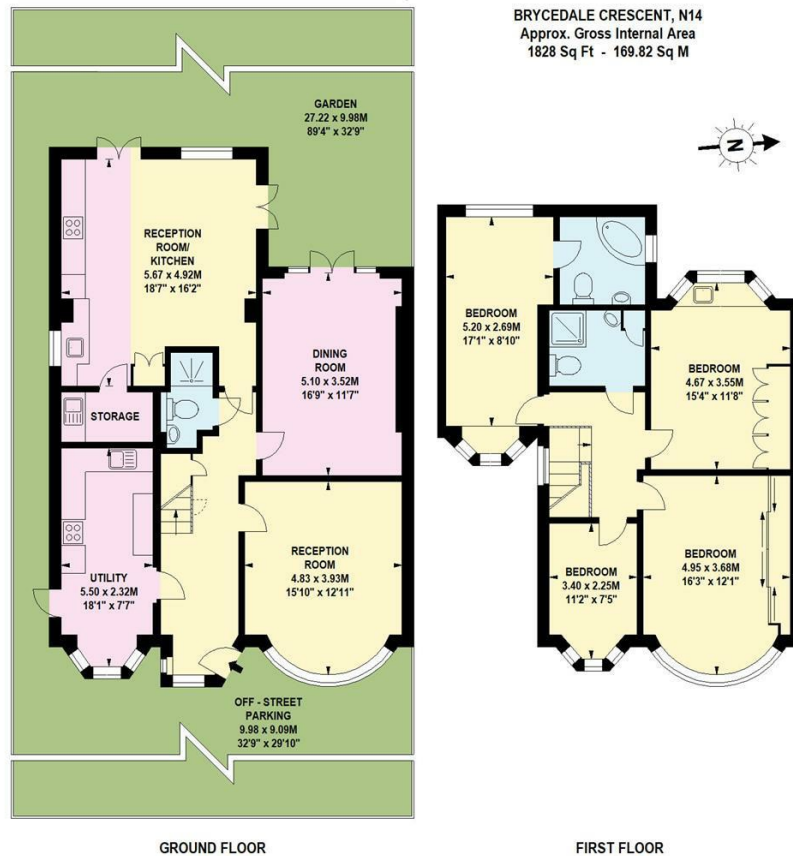
**02088822828**

[info@rashandrash.com](mailto:info@rashandrash.com)

<https://www.rashandrash.com/>

**Council Tax Band**

**F**



Agents Note: Whilst every care has been taken to prepare these particulars, they are for guidance purposes only. All measurements are approximate and are for general guidance purposes only and whilst every care has been taken to ensure their accuracy, they should not be relied upon and potential buyers are advised to recheck the measurements.

**RASH & RASH**