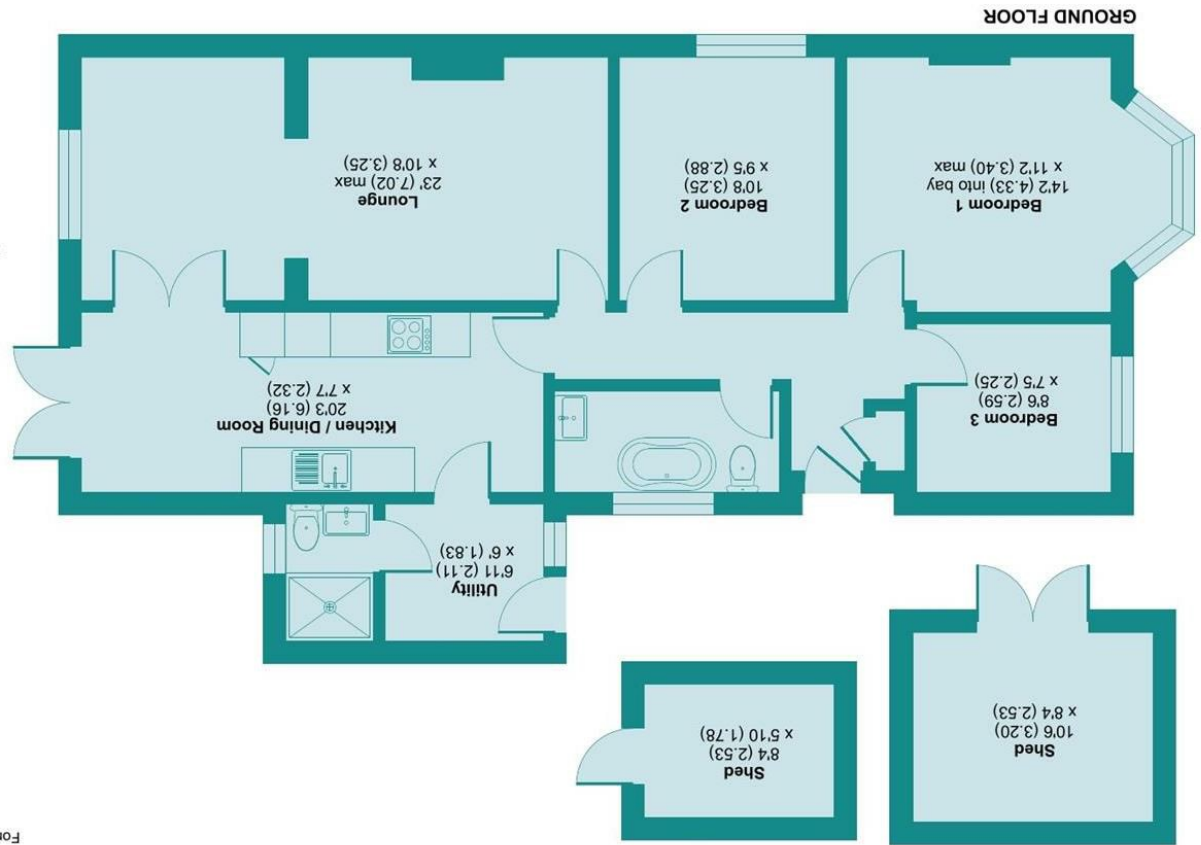


Produced for James Estate Agents. REF: 1432785
Incorporating International Property Measurement Standards (IPMS2 Residential). © nchcom 2026.



Approximate Area = 938 sq ft / 87.1 sq m
Outbuildings = 135 sq ft / 12.5 sq m
Total = 1073 sq ft / 99.6 sq m
For identification only - Not to scale



Durrants Drive, Croxley Green, Rickmansworth, WD3 3NZ

LOCAL AUTHORITY
Three Rivers District Council

TENURE
Freehold

COUNCIL TAX BAND
E

VIEWINGS
By prior appointment only

Energy Efficiency Rating	
Current	Potential
85	61
<small>Very good - lowest energy ratings</small> <small>Good</small> <small>Fair</small> <small>Poor</small> <small>Very poor - highest energy ratings</small>	
<small>EU Directive 2002/91/EC</small> <small>England & Wales</small> <small>Not energy related - higher ratings costs</small>	

Agents Note: Whilst every care has been taken to prepare these particulars, they are for guidance purposes only. All measurements are approximate and are for general guidance purposes only and whilst every care has been taken to ensure their accuracy, they should not be relied upon and potential buyers/tenants are advised to recheck the measurements



GUIDE PRICE
£675,000
DURRANTS DRIVE
CROXLEY GREEN, RICKMANSWORTH, WD3 3NZ

PROPERTY SUMMARY

Situated on popular Durrants Drive this well presented detached bungalow spanning an impressive 938 square feet presents an exceptional opportunity for families and downsizers alike.

Upon entering, you are welcomed into a spacious reception room. The thoughtful layout of the bungalow ensures a seamless flow between the living areas. The kitchen/diner is a highlight, featuring a fitted kitchen complete with integrated fridge/freezer and dishwasher, alongside a separate utility room for added convenience. The property features three well-proportioned bedrooms and is equipped with two modern bathrooms, catering to the needs of a busy household.

Outside, the bungalow boasts parking for two vehicles, a valuable asset in this sought-after area. The garden is a true delight, offering patio areas perfect for al fresco dining and a charming garden room, ideal for enjoying the outdoors in comfort.

Located in close proximity to local amenities, excellent schools, and Croxley Green Station, providing easy access to transport links.

3



2



1

