



Kew Road, TW9

£550,000

A rare opportunity to acquire this two double bedroom ground floor apartment, forming part of this highly regarded and sought-after 1930's development, located directly opposite the world-renowned Royal Botanic Gardens at Kew.

Ideally positioned, the apartment is just a short stroll from the picturesque Kew Green and the vibrant shops, cafés, and amenities of Kew Village. Excellent transport links are close at hand, with Kew Gardens Underground Station (District Line and Overground), Kew Bridge mainline station, and a range of bus routes all offering swift access into central London and beyond.

Features

- Two Double Bedrooms
- Share of Freehold
- Ground Floor Apartment
- Natural Light
- Communal Gardens
- Off-Street Parking



Kew Road, TW9

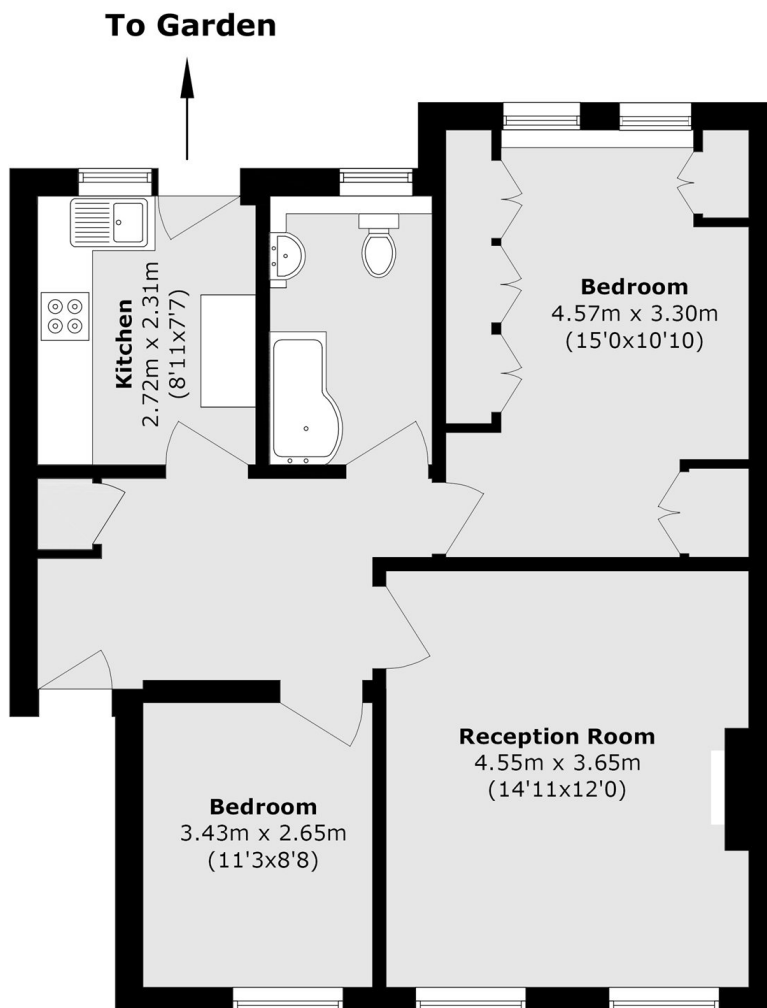
This outstanding and remarkably spacious flat provides well proportioned living space throughout, filled with natural light and benefiting from pleasant open views to both the front and rear.

The well-planned interior includes a bright and welcoming reception room, two sizeable double bedrooms, and a large kitchen with direct access to a private service balcony.

Nestled within immaculately maintained, park-like communal gardens, the development enjoys a tranquil, leafy setting that provides a true sense of peace and seclusion. Residents further benefit from ample off-street parking, adding to the ease and comfort of day-to-day living in this secure and sought-after location.



Kew Road, Kew, TW9



Total area (approx.): 65.5 sq. m (705.0 sq. ft)