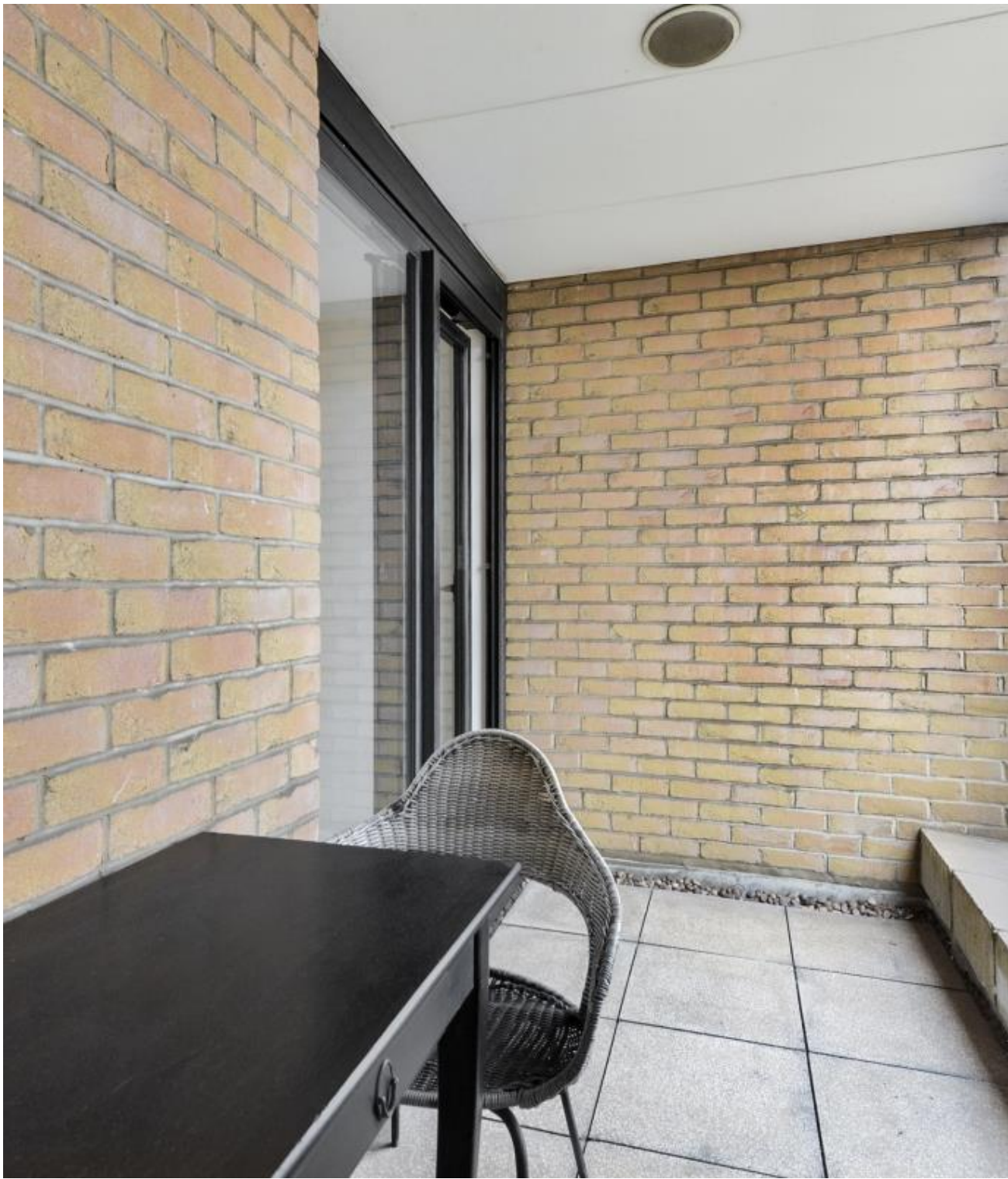




## Cromwell Road, London SW7

Guide price £550,000 Leasehold







# Description

Set on the fifth floor and extending to a well-proportioned 643 sq ft of living space, the apartment offers a good-sized balcony access from both the reception room and bedroom.

From the welcoming entrance hall with practical storage, the apartment unfolds to reveal a generously proportioned reception room enhanced by elegant parquet flooring and opening onto the private balcony. The separate kitchen features contemporary cabinetry and quality integrated appliances. The bedroom boasts built-in storage and enjoys its independent access to the balcony, with a family bathroom completing the layout.

Point West is a well-managed building offering lift access and 24 hour concierge services. Gloucester Road's transport links (0.3 miles), cafés, restaurants, and supermarkets are within walking distance. Residents also enjoy easy access to the attractions of South Kensington and the green spaces of Kensington Gardens.

Leasehold 100 years (exp. 02/05/2126)  
Ground Rent: Approx. £800 pa  
Service Charge: Approx. £8,800 pa  
Council Tax Band: F  
EPC Rating: B

- 1 Double bedroom
- 1 Bathroom
- Separate kitchen
- Private balcony
- Lift

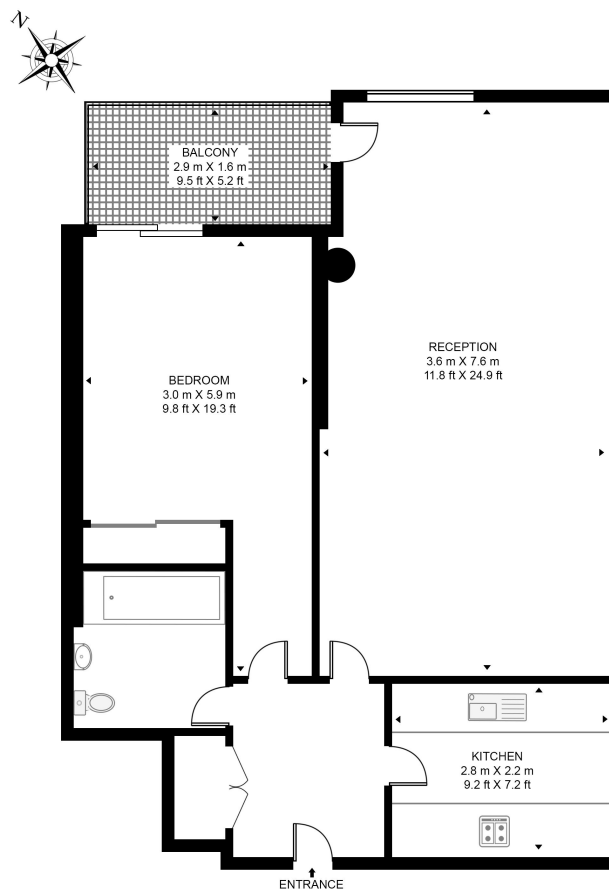
24hr Concierge  
0.3 miles to Gloucester Road Station  
Approx. 643 sq ft / 59.7 sq m



# Floorplan

643 sq ft | 60 sq m

**CROMWELL ROAD**  
APPROXIMATE GROSS INTERNAL FLOOR AREA 643 SQ.FT (59.7 SQ.M)



FIFTH FLOOR



This floor plan has been defined by the RICS Code of Measurement. This floor plan and all others are for approximate representative purposes only and upon usage is agreed to as such by the client.  
WWW: [hdvirtualart.com](http://hdvirtualart.com) | TEL: 0203.974.1567 | EMAIL: [info@hdvirtualart.com](mailto:info@hdvirtualart.com)

Chelsea  
2 Cale Street,  
London SW3 3QU  
+4420 7399 5010  
[saleschelsea@jll.com](mailto:saleschelsea@jll.com)

*Urban living, your way.*

[jll.co.uk/residential](http://jll.co.uk/residential)

© 2019 Jones Lang LaSalle IP, Inc. All rights reserved. All information contained herein is from sources deemed reliable; however, no representation or warranty is made to the accuracy thereof.

