



Fredericks Row, EC1V

£7,000 Per month

 5  1  6 

- Five Double Bedrooms
- Six Bathrooms
- Mews House
- Private Roof Terrace
- Sharers Welcome
- Angel

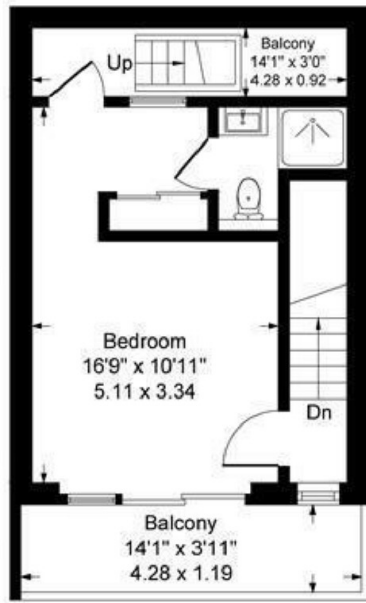


A rare mews house located in a quiet cul-de-sac located in Angel just off Goswell Road and close to Angel Station. Arranged over three floors, the house offers five double bedrooms, four ensuite bathrooms and two additional guest bathrooms, a fully equipped kitchen and a large living room with access to a private balcony and a roof terrace. Ideal for professional sharers.

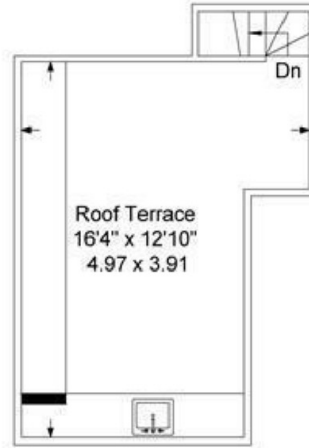
Ideally located between Angel and Clerkenwell which is well know for its high street amenities, restaurants and supermarkets. Walking distance to Farringdon and Liverpool Street and only moments away from Angel station, providing an easy access to the City, the West End and Kings Cross.



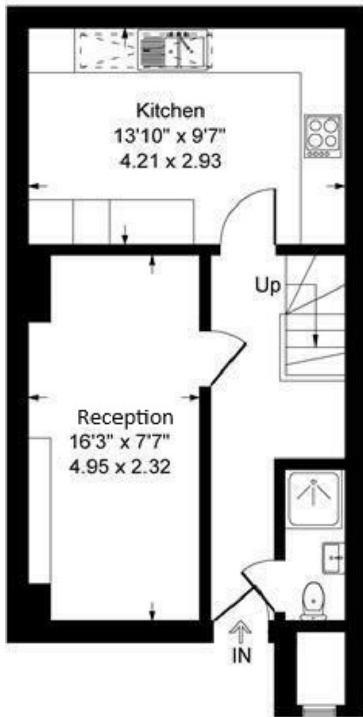
Fredericks Row, London, EC1V
 Approximate Gross Internal Area = 1348 sq ft / 125.23 sq m



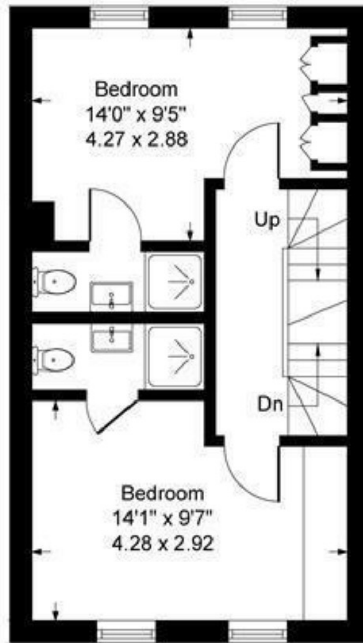
Third Floor



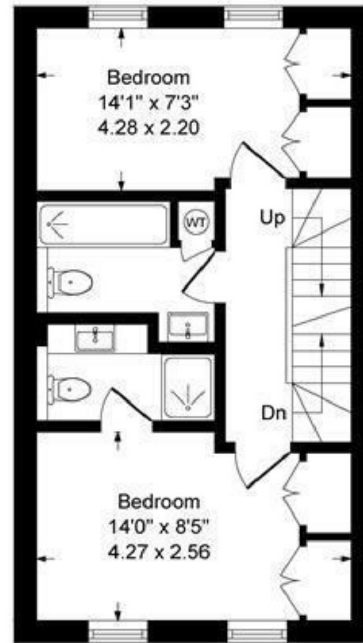
Roof Terrace



Ground Floor



First Floor



Second Floor

Illustration for identification purposes only,
 measurements are approximate, not to scale. (ID788)

35A Wapping High Street,
 London, E1W 1NR
 020 7702 3456
 ea2group.com



Energy Rating: We aim to make our particulars both accurate and reliable. However they are not guaranteed; nor do they form part of an offer or contract. If you require clarification on any points then please contact us, especially if you're travelling some distance to view. Please note that appliances and heating systems have not been tested and therefore no warranties can be given as to their good working order.