



Walnut Tree Walk, SE11

£1,325,000

A remarkable three bedroom Grade II listed mid terrace home. Great attention to detail has gone into renovating this home which benefits from an abundance of living and entertaining space and a peaceful rear garden. No onward chain.

Walnut Tree Walk is a peaceful tree lined street just moments from pubs, eateries and local shops. High in community spirit, this perfect Kennington location has great access to transport links that are unbeatable with Kennington, Elephant & Castle and Lambeth North Stations close by. The property is also within a short stroll of the River Thames and with good access to the City and West End.

Features

- Grade II listed
- Three Bedrooms
- Excellent Condition
- No Onward Chain
- Two Bathrooms
- Excellent Location



Walnut Tree Walk, SE11

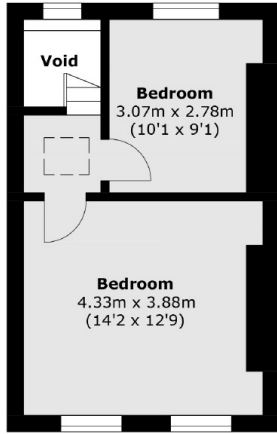
The ground floor has a double reception room which is flooded with natural light and benefits from two beautiful feature fireplaces with marble surrounds, bespoke cabinetry and views over the rear garden. Additionally there is beautifully panelling and character detail.

The lower ground floor has a sociable semi-open plan kitchen and dining room. The timeless shaker style kitchen is perfect for those who love to entertain with plenty of work top space and an island there is great storage and access to the front of the house with access to two storage vaults. There is direct access via the dining area out onto a maintenance free rear garden with plenty of space for outside dining. Furthermore there is a downstairs shower room and additional access to the garden.

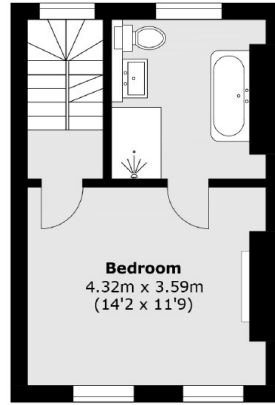
The first floor is all about the master bedroom which has floor to ceiling windows, a sumptuous ensuite bathroom with a walk in shower and a separate bathtub. The second floor has two more bedrooms. This turnkey property has been incredibly well finished leaving the next buyer nothing to do but move in. Sold with no onward chain.



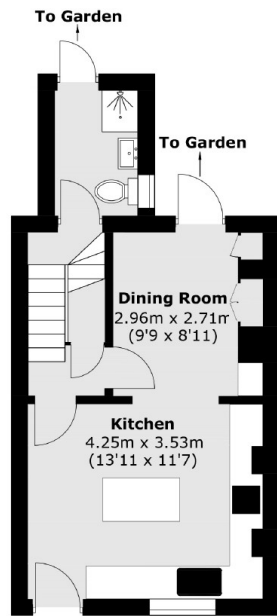
Walnut Tree Walk, London, SE11



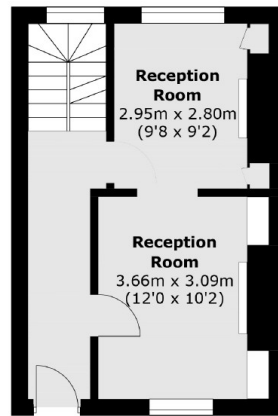
Second Floor



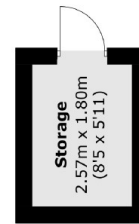
First Floor



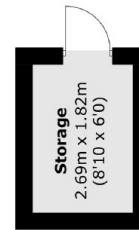
Lower Ground Floor



Upper Ground Floor



(Not Shown In Actual Location / Orientation)



(Not Shown In Actual Location / Orientation)

Total area (approx.): 119.3 sq. m (1284.0 sq. ft)
Storages: 9.8 sq. m (105.4 sq. ft)