



Hale Grove Gardens

£2,200 Per Month

Cosway Estates are delighted to present this exceptional two-bedroom garden flat, located in a lovely house conversion in a peaceful cul-de-sac, just moments from Mill Hill Broadway.

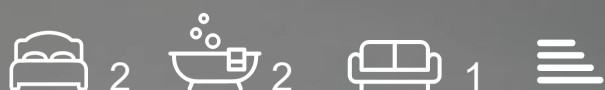
Finished to the highest standard throughout, this beautifully designed home features a spacious open-plan kitchen and living area with sleek granite countertops, complemented by elegant bi-fold doors that lead to a private rear garden. The property boasts two bedrooms, including a master suite with an en-suite shower room, as well as a second bathroom for added convenience.

Additional benefits include off-street parking and an ideal location, with the shops, restaurants, and cafes of Mill Hill Broadway, along with Mill Hill Thameslink station, just a short walk away. AVAILABLE JULY 2026. Viewings highly recommended.

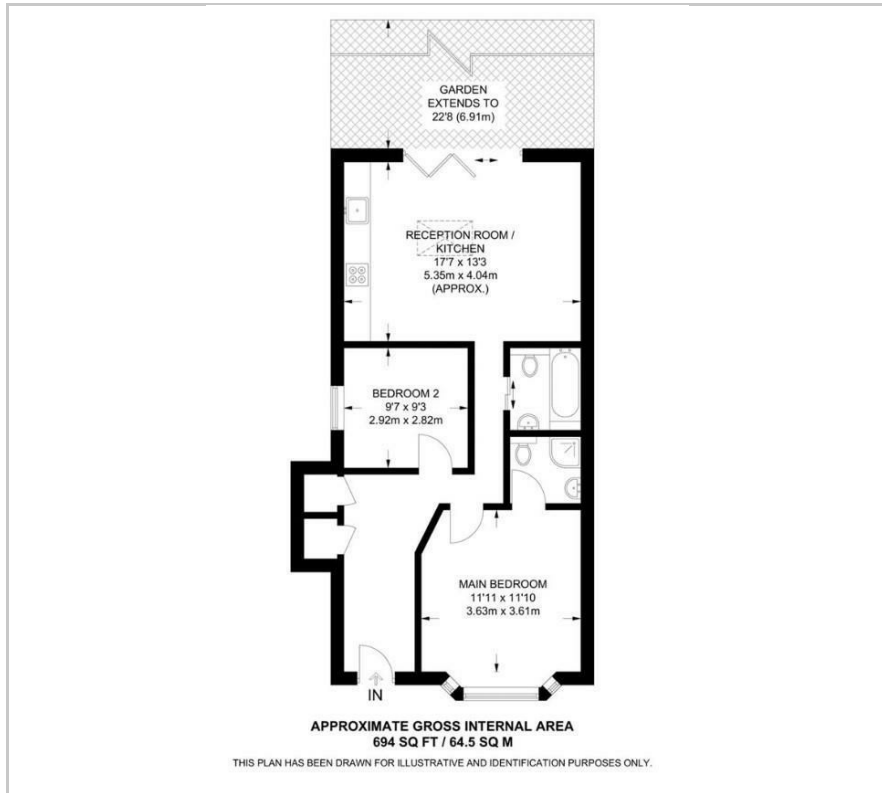
Viewing

Please contact our Mill Hill Office on 02089590011 if you wish to arrange a viewing appointment for this property or require further information.

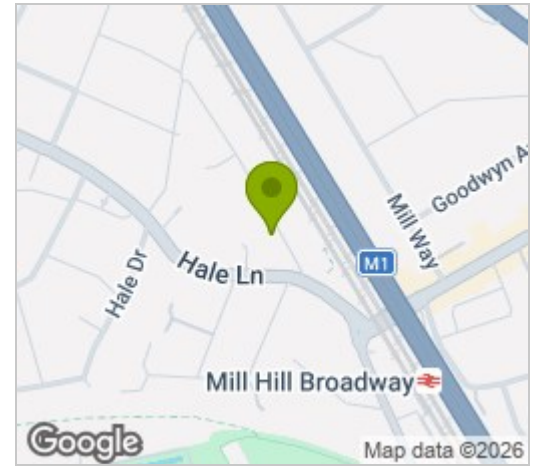
- 2 DOUBLE BEDROOMS
- 2 BATHROOMS
- GARDEN FLAT
- SHARE OF FREEHOLD
- NO GROUND RENT OR SERVICE CHARGE
- GROUND FLOOR
- CHAIN FREE



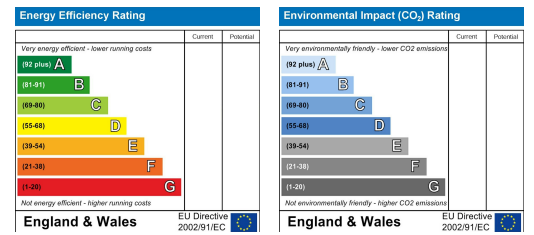
Floor Plan



Area Map



Energy Efficiency Graph



These particulars, whilst believed to be accurate are set out as a general outline only for guidance and do not constitute any part of an offer or contract. Intending purchasers should not rely on them as statements of representation of fact, but must satisfy themselves by inspection or otherwise as to their accuracy. No person in this firm's employment has the authority to make or give any representation or warranty in respect of the property.