



Welley Road, TW19

£4,500 Per calendar month

A stunning, detached family home which has been built to a very high standard with wonderful views of the lake behind. This property features an entrance hall, dining room, living room, W.C, utility room, as well as an eat-in kitchen and living area. There are three double bedrooms, one with an en-suite, and a family bathroom in addition to the master bedroom featuring a walk-in wardrobe and en-suite shower room.

Welley Road is located only 0.6 mile to Sunnymeads train station and 1.4 miles to Wraysbury train station.

Features

- Detached House
- Four Double Bedrooms
- Three Bathrooms
- Lakeside
- Large Driveway
- High Specification



Welley Road, TW19

A stunning, four double bedroom detached family home, newly built to a very high standard with wonderful views of the lake behind. The property features an impressive entrance hall with a vaulted ceiling and galleried landing, dining room, large living room, W.C, utility room. The beautiful bespoke kitchen with integrated Bosch appliances, has a large central island and granite worktops opening onto a large family living and dining area with bi-fold doors to garden. On the first floor there are three generous double bedrooms, one with en-suite, as well as a stylish four piece family bathroom and, in addition, a spacious master bedroom with high vaulted ceiling, a walk-in wardrobe, an en-suite shower room and Juliette balcony with views across the garden and the lake.

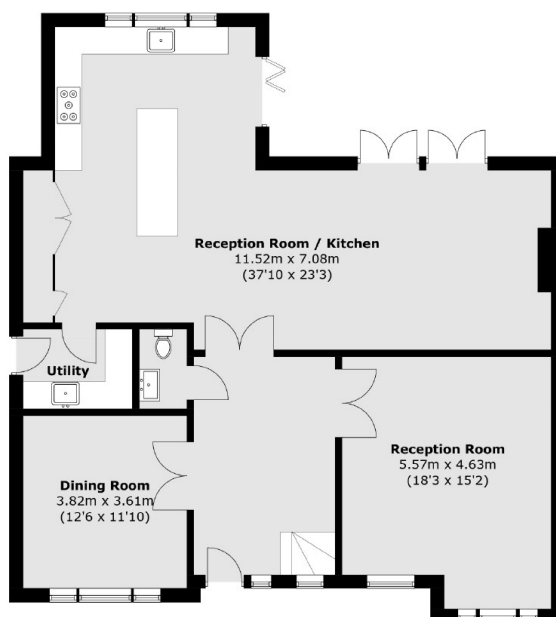
To the rear there is an approximately 150' lawned garden with a storage shed and a fence to the rear with gate to access the lakeside. To the front there is a block paved driveway with parking for several cars, landscaped borders and entrance gates.



Welley Road, Staines-Upon-Thames, TW19



First Floor



Ground Floor

Total area (approx.): 222.7 sq. m (2,397.1 sq. ft)
(Excluding Void)