

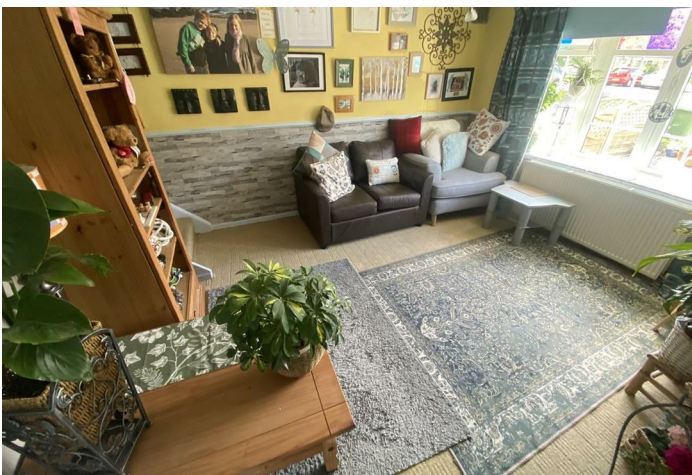


50 Chipchase Court

New Hartley, Whitley Bay NE25 0SR

- Lovely Location
- Open Plan Living Room
 - Two Bedrooms
- Gardens, Front and Rear
- Close to Local Amenities
- Semi Detached House
 - Re-fitted Kitchen
 - Driveway and Garage
- Ideal for first time buyers
 - Freehold

£165,000





Located in the charming village of New Hartley, Chipchase Court presents an excellent opportunity for first-time buyers seeking a semi-detached house.

Upon entering, you are greeted by a welcoming entrance hallway, complete with a handy storage cupboard. The living room features a lovely bow window that allows natural light to flood the space. A good-sized dining kitchen, which is fitted with both wall and floor units, contrasting worktops, and a stainless steel sink. There is ample space for a cooker and a dining table, making it an ideal spot for family meals or entertaining guests. A door conveniently leads to the garage, providing additional storage or parking options. The staircase leads you to the first floor, where you will find two generously sized bedrooms. The bathroom is equipped with a panelled bath with an electric shower over, a wash hand basin, and a low-level WC,.

Externally to the front, the property features a long driveway that leads to the garage and garden. The rear garden is a true highlight, being well-stocked and offering a tranquil space for outdoor enjoyment.

With local amenities nearby, this semi-detached house in New Hartley is not only a comfortable home but also a practical choice for those looking to settle in a friendly community. Don't miss the chance to make this property your own.

Entrance Hallway

Living Room

12'6 x 10'9

Kitchen

12'5 x 11'8

First Floor Landing

Bedroom One

12'9 x 11'9

Bedroom Two

10'7 x 6'10

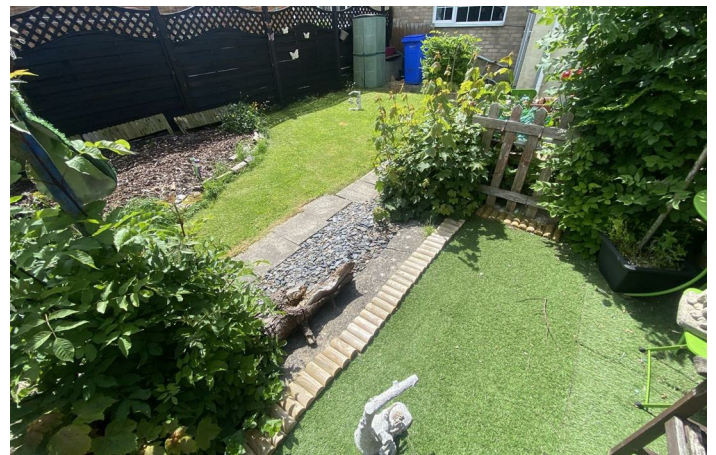
Bathroom

8'0 x 4'8

Externally

Disclaimer

ML Estates Ltd endeavour to maintain accurate descriptions of properties in Virtual Tours, Brochures, Floor Plans and descriptions, however, these are intended only as a guide and purchasers must satisfy themselves by personal inspection. All rooms have been measured with electronic laser and are approximate measurements only. None of the services to the above property have been tested by ourselves, and we cannot guarantee that the installations described in the details are in perfect working order. ML Estates for themselves, the vendors or lessors, produce these brochures in good faith and are a guideline only. They do not constitute any part of a contract and are correct to the best of our knowledge at the time of going to press. Pictures may appear distorted due to enlargement and are not to be used to give an accurate reflection of size. All negotiations and payments are subject to contract. The Tenure of the property should be clarified by your legal representative prior to exchange of contracts.







Local Authority northumberland county council
Council Tax Band A
EPC Rating D
Tenure Freehold

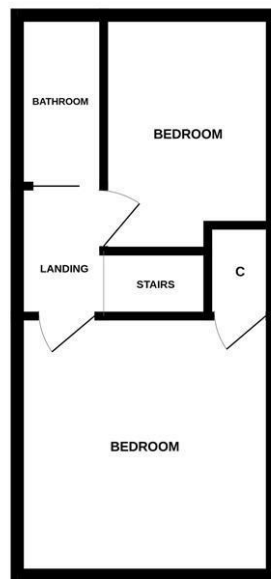
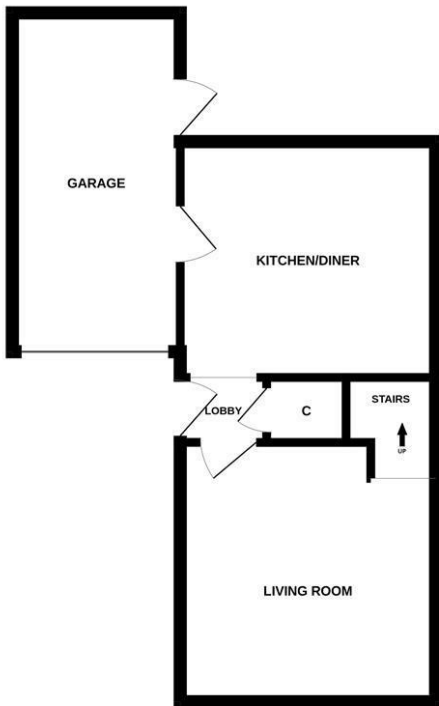
Energy Efficiency Rating		Current	Potential
Very energy efficient - lower running costs			
(92 plus) A			
(81-91) B			
(69-80) C			
(55-68) D			
(39-54) E			
(21-38) F			
(1-20) G			
Not energy efficient - higher running costs			
		66	80
England & Wales	EU Directive 2002/91/EC		

Environmental Impact (CO ₂) Rating		Current	Potential
Very environmentally friendly - lower CO ₂ emissions			
(92 plus) A			
(81-91) B			
(69-80) C			
(55-68) D			
(39-54) E			
(21-38) F			
(1-20) G			
Not environmentally friendly - higher CO ₂ emissions			
England & Wales	EU Directive 2002/91/EC		



GROUND FLOOR

1ST FLOOR



Whilst every attempt has been made to ensure the accuracy of the floorplan contained here, measurements of doors, windows, rooms and any other items are approximate and no responsibility is taken for any error, omission or mis-statement. This plan is for illustrative purposes only and should be used as such by any prospective purchaser. The services, systems and appliances shown have not been tested and no guarantee as to their operability or efficiency can be given.
 Made with Meograph ©2025.

ML Estates Sales Office

27 Avenue Road, Seaton Delaval, Tyne
 And Wear, NE25 0DT

Contact

0191 237 60 60
 sd@mlestates.co.uk
 www.mlestates.co.uk/

Agents Note: Whilst every care has been taken to prepare these particulars, they are for guidance purposes only. All measurements are approximate and for general guidance purposes only and whilst every care has been taken to ensure accuracy, they should not be relied upon and potential buyers/tenants are advised to recheck the measurements.