



Connells

Braemar Road
Norton Canes, Cannock



Ground Floor

Porch

Having a front entrance door, laminate flooring and doors to WC and hallway

W.C

Having a WC, wash hand basin, part tiled walls, ceiling light point and vinyl flooring

Hallway

Having laminate flooring, ceiling light point, doors to lounge and kitchen and stairs to first floor

Kitchen

Being a fitted kitchen with a range of wall, base and drawer units with laminate work surfaces over and having a sink/drainage, plumbing for the washing machine, space for appliances, tiled splash-backs, space for dining furniture, radiator, ceiling light point, tiled flooring, window to the front aspect and door to hallway

Lounge/Diner

Having windows and doors to the rear garden, two radiators, two ceiling light points, space for dining furniture and carpeted flooring



First Floor

Landing

Having carpeted flooring, ceiling light point and doors to bedrooms and bathroom

Bedroom 1

Having a window to the rear aspect, radiator, ceiling light point and carpeted flooring

Bedroom 2

Having a window to the front aspect, radiator, ceiling light point and carpeted flooring

Bedroom 3

Having a window to the rear aspect, radiator, ceiling light point and carpeted flooring

Bathroom

Having a window to the front aspect, WC, wash hand basin, bath with shower over, part tiled walls, ceiling light point and vinyl flooring

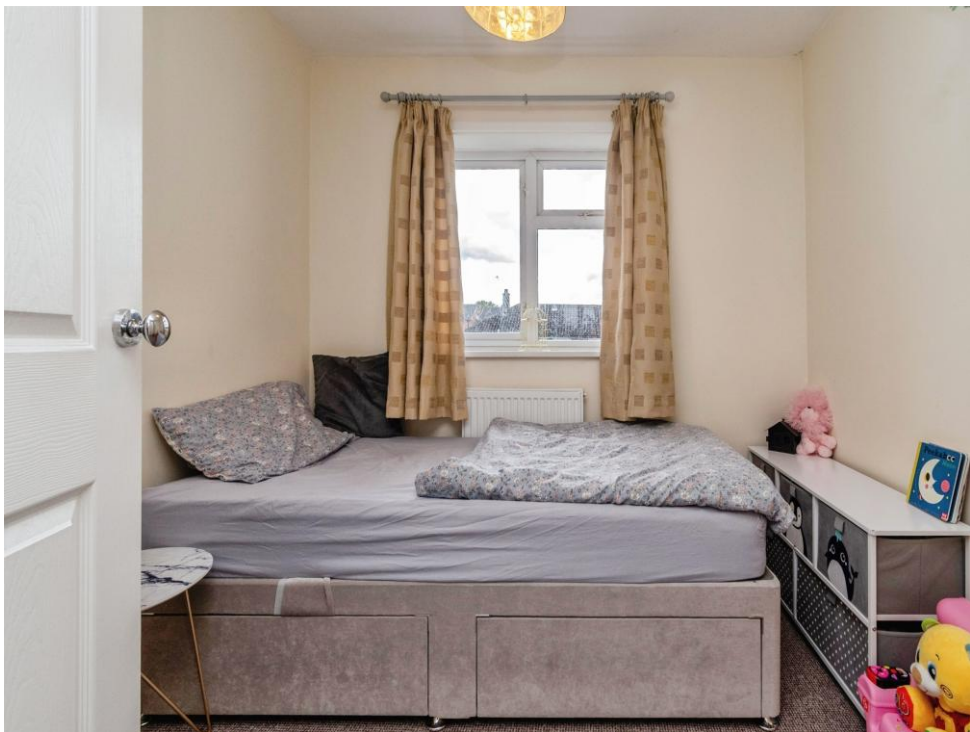
Front

Having a front garden complete with lawn area, a variety of shrubs, paved pathway to front entrance porch and secure gated side access to rear garden

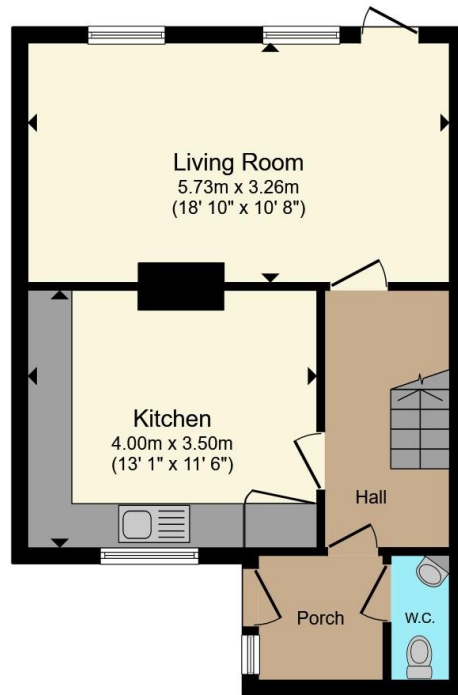
Rear

Having a paved patio area, lawn, variety of shrubs and access to outbuilding

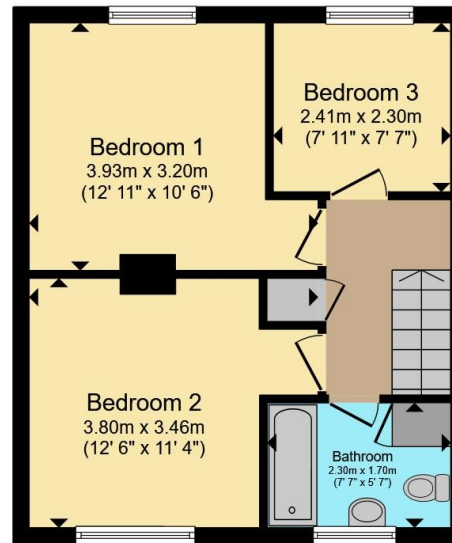








Ground Floor



First Floor

Total floor area 83.3 m² (897 sq.ft.) approx

This floor plan is for illustrative purposes only. It is not drawn to scale. Any measurements, floor areas (including any total floor area), openings and orientation are approximate. No details are guaranteed, they cannot be relied upon for any purpose and they do not form part of any agreement. No liability is taken for any error, omission or misstatement. A party must rely upon its own inspection(s). Powered by www.propertybox.io



To view this property please contact Connells on

T 01543 500923
E cannock@connells.co.uk

10-12 Wolverhampton Road
 CANNOCK WS11 1AH

EPC Rating: E Council Tax
 Band: A

Tenure: Freehold

view this property online connells.co.uk/Property/CNK108848



1. MONEY LAUNDERING REGULATIONS Intending purchasers will be asked to produce identification documentation at a later stage and we would ask for your co-operation in order that there will be no delay in agreeing the sale. 2. These particulars do not constitute part or all of an offer or contract. 3. The measurements indicated are supplied for guidance only and as such must be considered incorrect. Potential buyers are advised to recheck measurements before committing to any expense. 4. We have not tested any apparatus, equipment, fixtures, fittings or services and it is in the buyers interest to check the working condition of any appliances.

Connells Residential is registered in England and Wales under company number 1489613, Registered Office is Cumbria House, 16-20 Hockliffe Street, Leighton Buzzard, Bedfordshire, LU7 1GN. VAT Registration Number is 500 2481 05.

See all our properties at www.connells.co.uk | www.rightmove.co.uk | www.zoopla.co.uk

Property Ref: CNK108848 - 0001