



Aylesham Close

£2,495 Per Month

Cosway Estates are pleased to offer for rent lovely well-presented three bedroom family home situated in a quiet residential cul-de-sac in Mill Hill. The ground floor features a spacious reception/dining room, providing an ideal space for both everyday living and entertaining. To the rear, a separate fitted kitchen offers ample storage and worktop space, with direct access out to the garden. Perfect for summer dining and family use. A downstairs guest WC adds further practicality. Upstairs, the property offers three well-proportioned bedrooms, all benefiting from natural light and flexible layout options, ideal for families, home working, or guests. A family bathroom completes the first-floor accommodation. Externally, the property enjoys a private rear garden with useful storage via a garden shed, offering a low-maintenance outdoor space ideal for relaxing or entertaining and parking. This property is conveniently located within easy reach of local shops, schools, green spaces, and transport links, providing straightforward access into central London and surrounding areas. AVAILABLE NOW. Viewings highly advised.

Viewing

Please contact our Mill Hill Office on 02089590011 if you wish to arrange a viewing appointment for this property or require further information.

- Three bedroom family home
- Quiet residential cul-de-sac
- Spacious reception dining room
- Separate fitted kitchen
- Downstairs guest WC
- Private rear garden
- Useful garden shed storage
- Family bathroom upstairs
- Ideal first time purchase
- Popular Mill Hill location

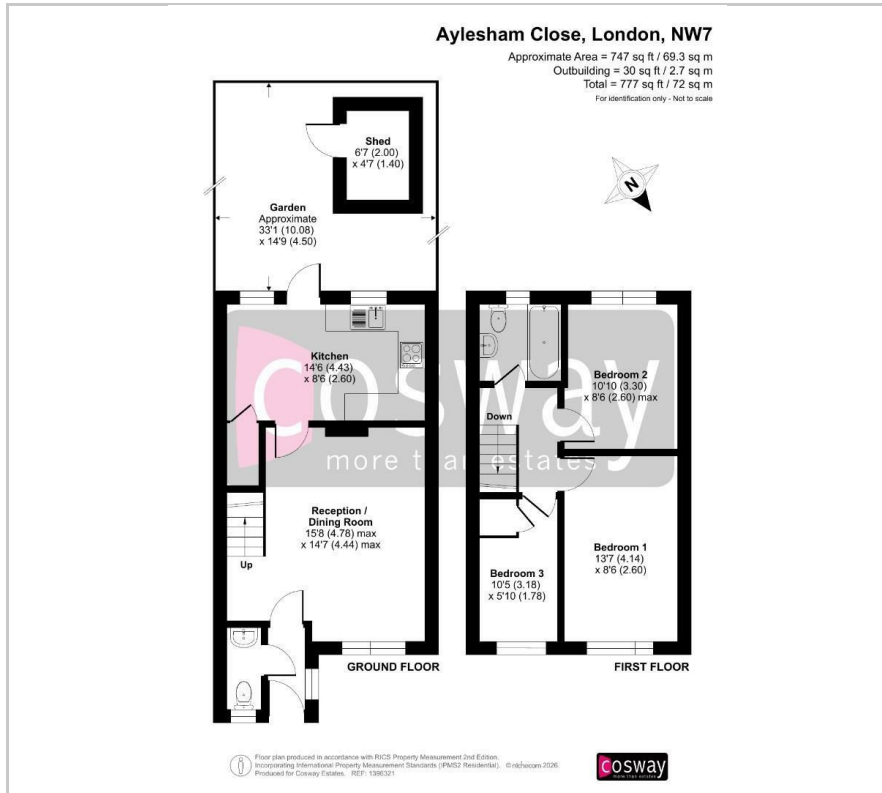
3

1

1

D

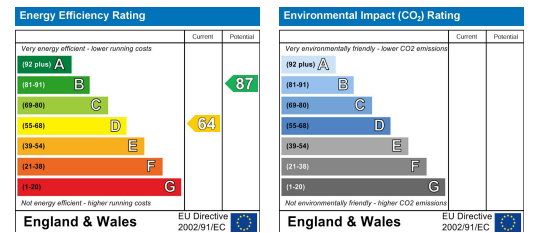
Floor Plan



Area Map



Energy Efficiency Graph



These particulars, whilst believed to be accurate are set out as a general outline only for guidance and do not constitute any part of an offer or contract. Intending purchasers should not rely on them as statements of representation of fact, but must satisfy themselves by inspection or otherwise as to their accuracy. No person in this firm's employment has the authority to make or give any representation or warranty in respect of the property.