



MILE



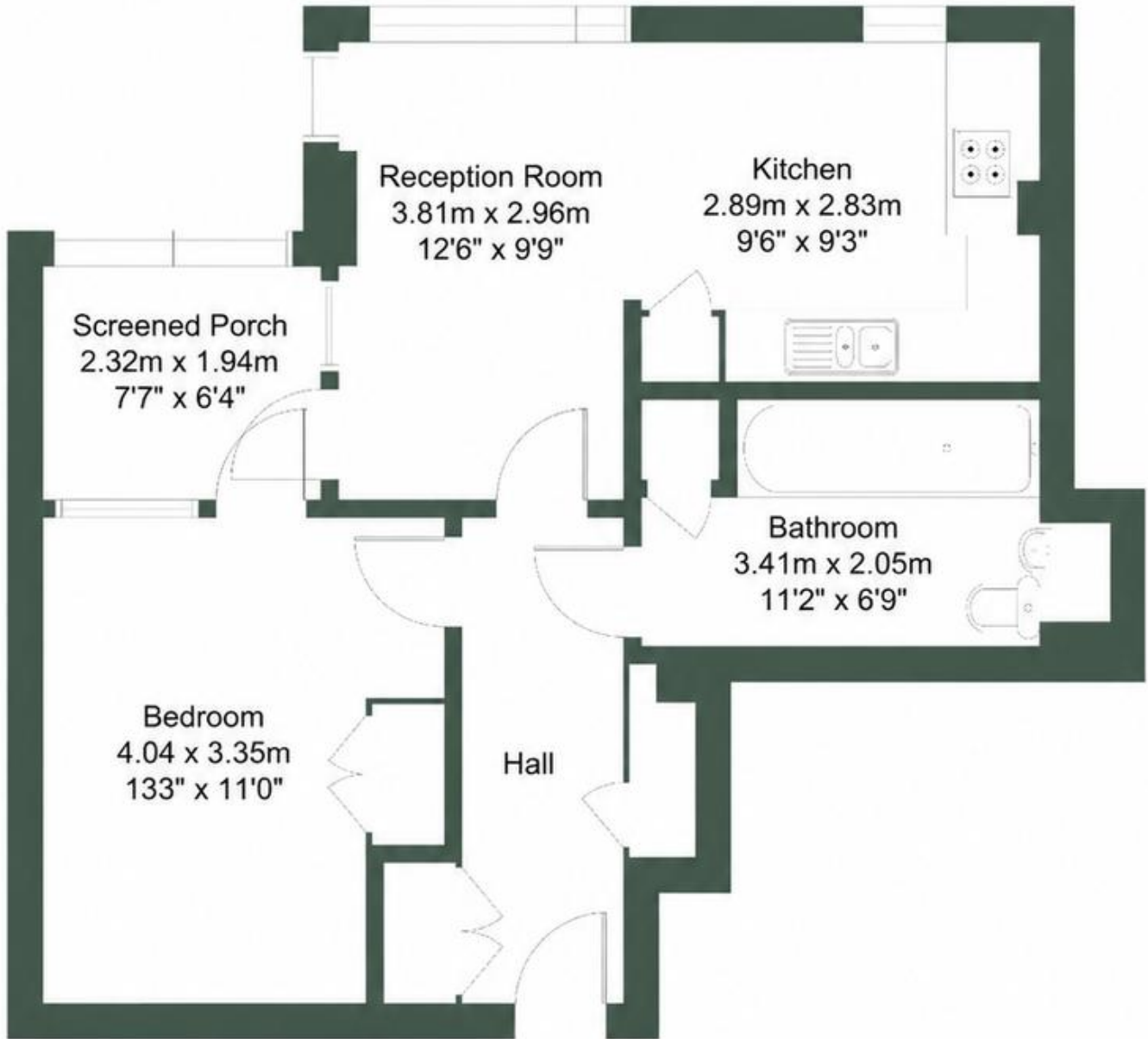
Zenith Close, London £280,000 Freehold

Mile are pleased to offer this spacious one bedroom flat for sale. The property consists of a large bedroom, a family bathroom, a large reception room with a semi open plan fully fitted kitchen. The apartment also benefits from an extra room known as a sun room. The property has got an ESW1 certificate and must be seen to avoid disappointment!! Recently laid carpet in bedroom and in immaculate condition!! Located a short 5-7 min walk to the station and shops.
EPC RATING B

- MODERN
- ONE BEDROOM APARTMENT
- SUN ROOM
- Close to local amenities
- EPC RATING B
- MUST BE SEEN!
- NEW CARPET
- GREAT CONDITION
- CLOSE TO TRANSPORT

ZENITH CLOSE, NW9

Approximate Gross Internal Area = 52.88 sq.m / 569 sq.ft



Eighth Floor



This floor plan is not to scale and measurements and areas are approximate and therefore should be used for illustrative purposes only. maximum widths and

MONEY LAUNDERING REGULATIONS 2003: Intending purchasers will be asked to produce identification documentation at a later stage and we would ask for your co-operation in order that there will be no delay in agreeing the sale.

General: While we endeavour to make our sales particulars fair, accurate and reliable, they are only a general guide to the property and, accordingly, if there is any point which is of particular importance to you, please contact the office and we will be pleased to check the position for you, especially if you are contemplating travelling some distance to view the property.

Measurements: These approximate room sizes are only intended as general guidance. You must verify the dimensions carefully before ordering carpets or any built-in furniture.

Services: Please note we have not tested the services or any of the equipment or appliances in this property, accordingly we strongly advise prospective buyers to commission their own survey or service reports before finalising their offer to purchase.