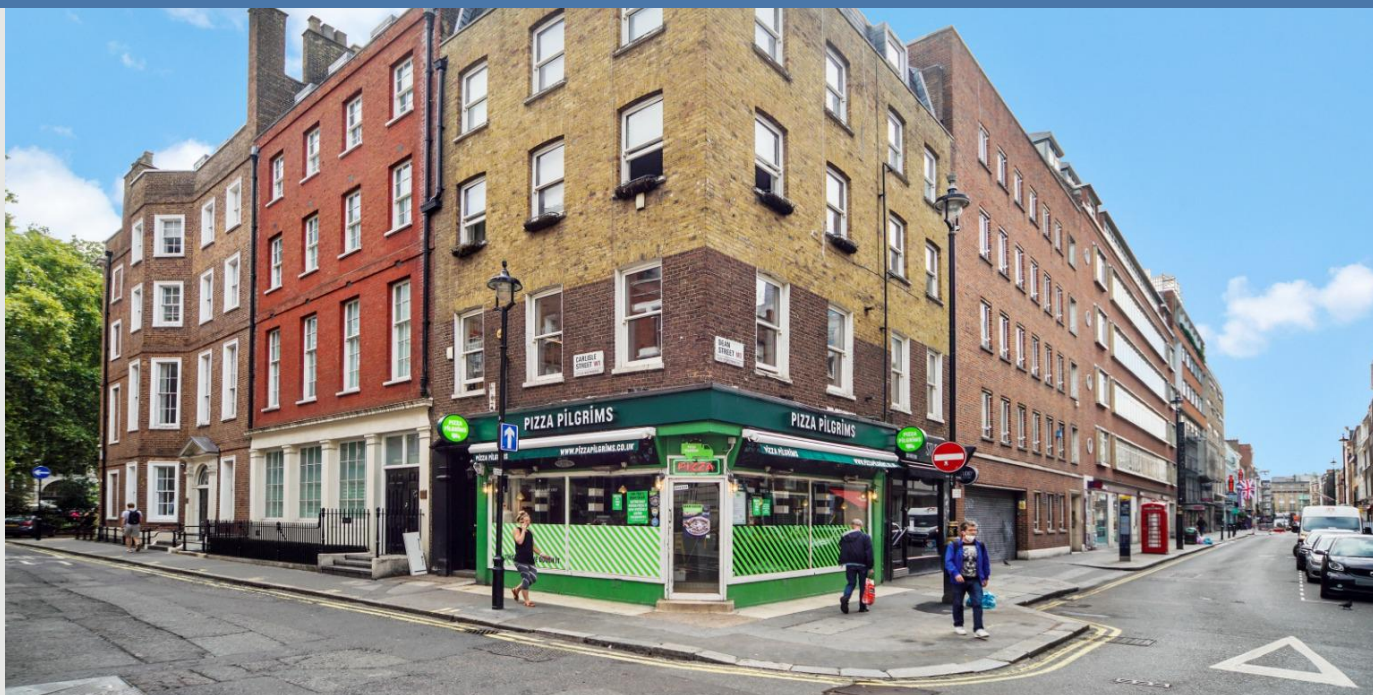


Carlisle Street
Greater London

Guide Price £900,000
Sales



Greater London Properties Presents...

- Third Floor Apartment In The Heart Of Soho
- Bright Corner Aspect With Excellent Natural Light
- Approx. 680 Sq Ft Of Internal Space
- Stylish Modern Interiors Throughout
- Spacious Open-plan Reception And Kitchen Area
- Soho



CALL NOW

www.glp.co.uk

@greaterlondonproperties

[t](#) [f](#) [in](#) [@](#)



VIEW ONLINE

glp