



33 Jupiter Road  
Barton Seagrave, NN15 4BB



**Simpson & Partners**

Simpson and Partners are excited to welcome this exceptional four-bedroom detached home to the rental market! Built by Bellway Homes only 2 years ago and ideally positioned on the highly sought-after Hanwood Park development, this property is not to be missed!

The downstairs comprises large lounge with snug area, downstairs WC and storage cupboard with the main feature being the impressive open-plan kitchen, dining, and family area - fully fitted with integrated appliances, a separate utility room and French doors opening onto the garden.

Upstairs, the home continues to impress with four well-proportioned bedrooms, including a stunning master bedroom complete with fitted wardrobes and en-suite shower room and a large family bathroom with three piece suite and rainfall shower.

Outside, the property benefits from a very generous rear garden, along with a driveway and detached garage.

Hanwood Park is a flourishing new neighbourhood on the outskirts of Kettering with excellent nearby transport links, schools and local amenities.

Available end of May

EPC A

Council Tax E

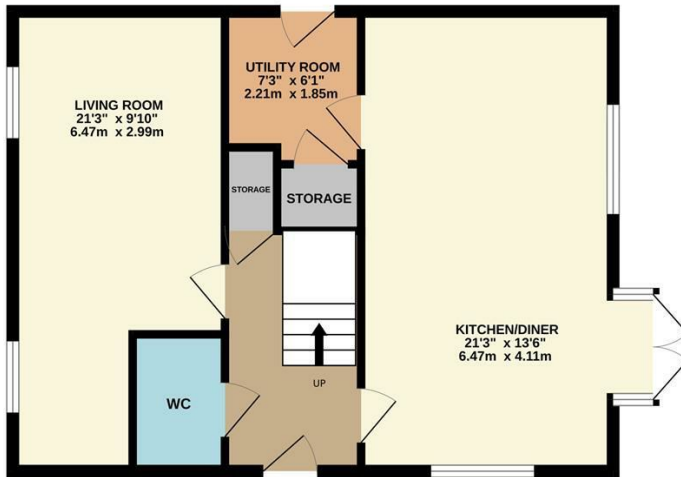
Pets will be considered

£1,950 PCM

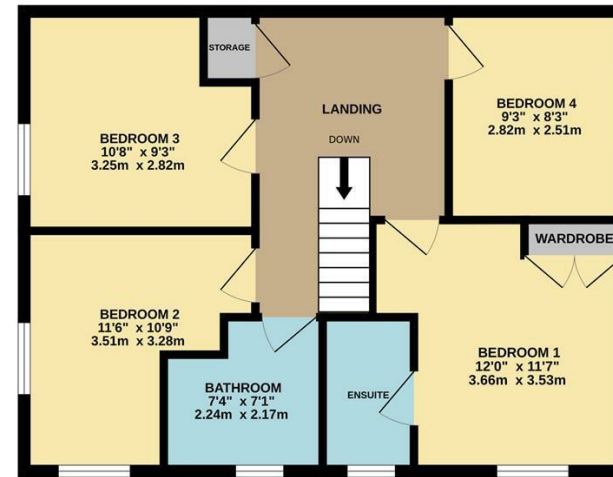
 4  3  2



GROUND FLOOR  
597 sq.ft. (55.5 sq.m.) approx.



1ST FLOOR  
588 sq.ft. (54.7 sq.m.) approx.



TOTAL FLOOR AREA : 1186 sq.ft. (110.2 sq.m.) approx.

Whilst every attempt has been made to ensure the accuracy of the floor plan contained here, measurements of doors, windows, rooms and any other items are approximate and no responsibility is taken for any error, omission, or mis-statement. The plan is copyright to Simpson and Partners and is for illustrative purposes and should only be used as such by any prospective purchaser. The services, systems and appliances shown have not been tested and no guarantee as to their operability can be given  
Made with Metropix ©2026



Energy Efficiency Rating

	Current	Potential
<i>Very energy efficient - lower running costs</i>		
(92 plus) <b>A</b>		
(81-91) <b>B</b>		
(69-80) <b>C</b>		
(55-68) <b>D</b>		
(39-54) <b>E</b>		
(21-38) <b>F</b>		
(1-20) <b>G</b>		
<i>Not energy efficient - higher running costs</i>		
<b>England &amp; Wales</b>	EU Directive 2002/91/EC	



When you buy with Simpson and Partners, you know **you'll be in safe hands**. From the moment you walk through our doors, we'll make you **feel truly welcome**. Our sales consultants and financial advisors will take you through **every step of the process**, offering **free expert advice** along the way, from help choosing the right mortgage and insurance through to finding your conveyancer. And if you need help selling your home too, **with over 20 years of local experience, you can trust us to get you moving**.



**Simpson  
& Partners**

Making Every  
Journey Personal



01536 518200

[kettering@simpsonandpartners.co.uk](mailto:kettering@simpsonandpartners.co.uk)

<https://www.simpsonandpartners.co.uk/>

1 Silver Street, Kettering, Northants, NN16 0BN