



Northumberland
Properties

5 Bank House Farm, Acklington
£370,000





5 Bank House Farm

Acklington, Morpeth

Grade II Listed Three-Storey Barn Conversion |
Three Bedrooms | Garage & Parking |
Countryside Setting Overlooking an Orchard
Steeped in rural heritage and beautifully
reimagined for modern living, Bank House Farm
forms part of a historic farmstead.
Council Tax band: D

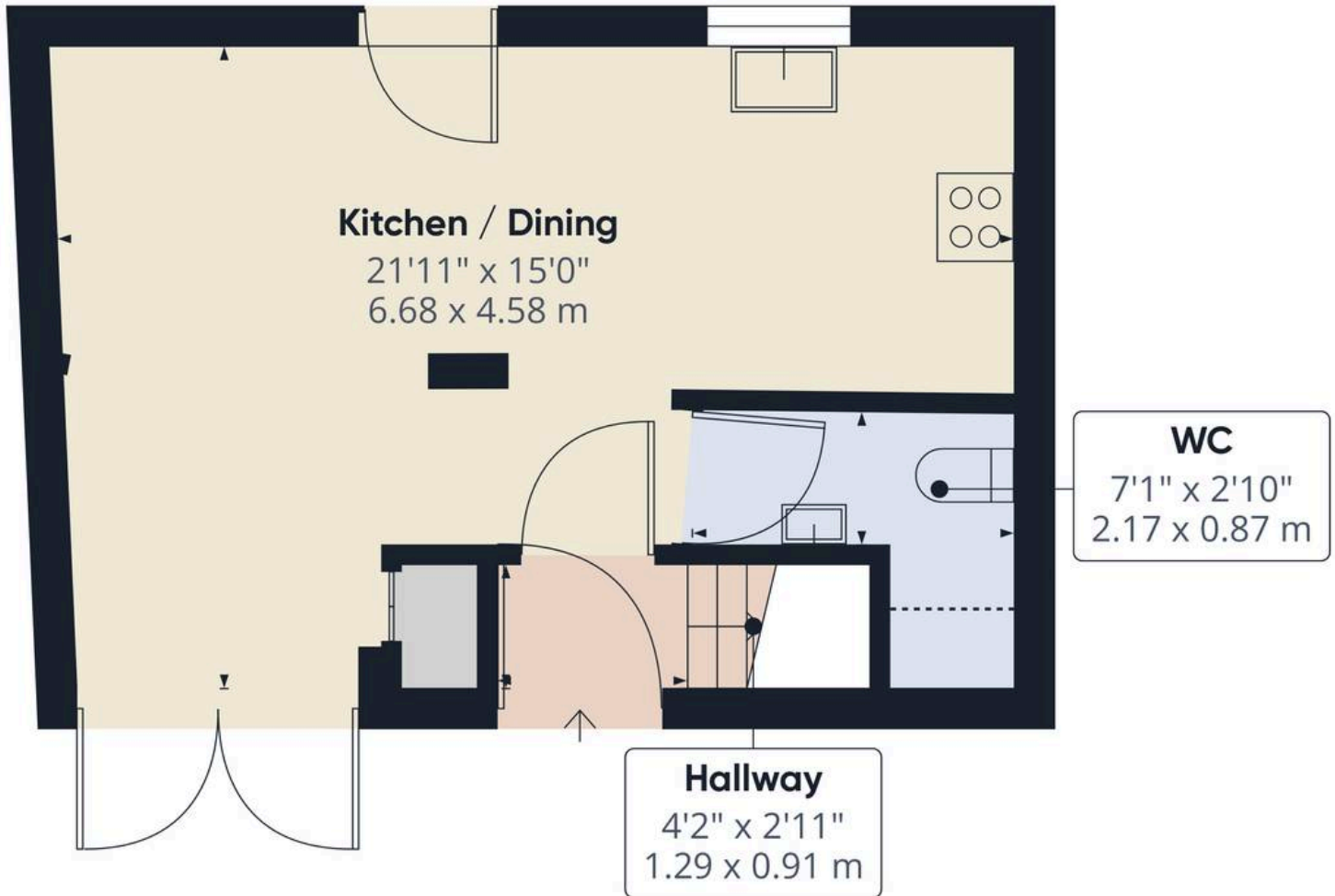
Tenure: Freehold

EPC Energy Efficiency Rating: D

EPC Environmental Impact Rating: E

- Beautiful Grade II listed stone-built barn conversion
- Dark Skies of Northumberland, offering exceptional opportunities for stargazing and tranquil evening views from the garden
- Arranged over three storeys, offering approximately 1,000 sq ft of living space
- Versatile Layout
- Private rear garden
- Driveway parking and garage providing convenience and storage
- Peaceful countryside location near the Coquet Valley and Heritage Coast, with easy access to Amble, Warkworth, Alnwick and Morpeth
- Close proximity to rail connection at Acklington and Alnmouth





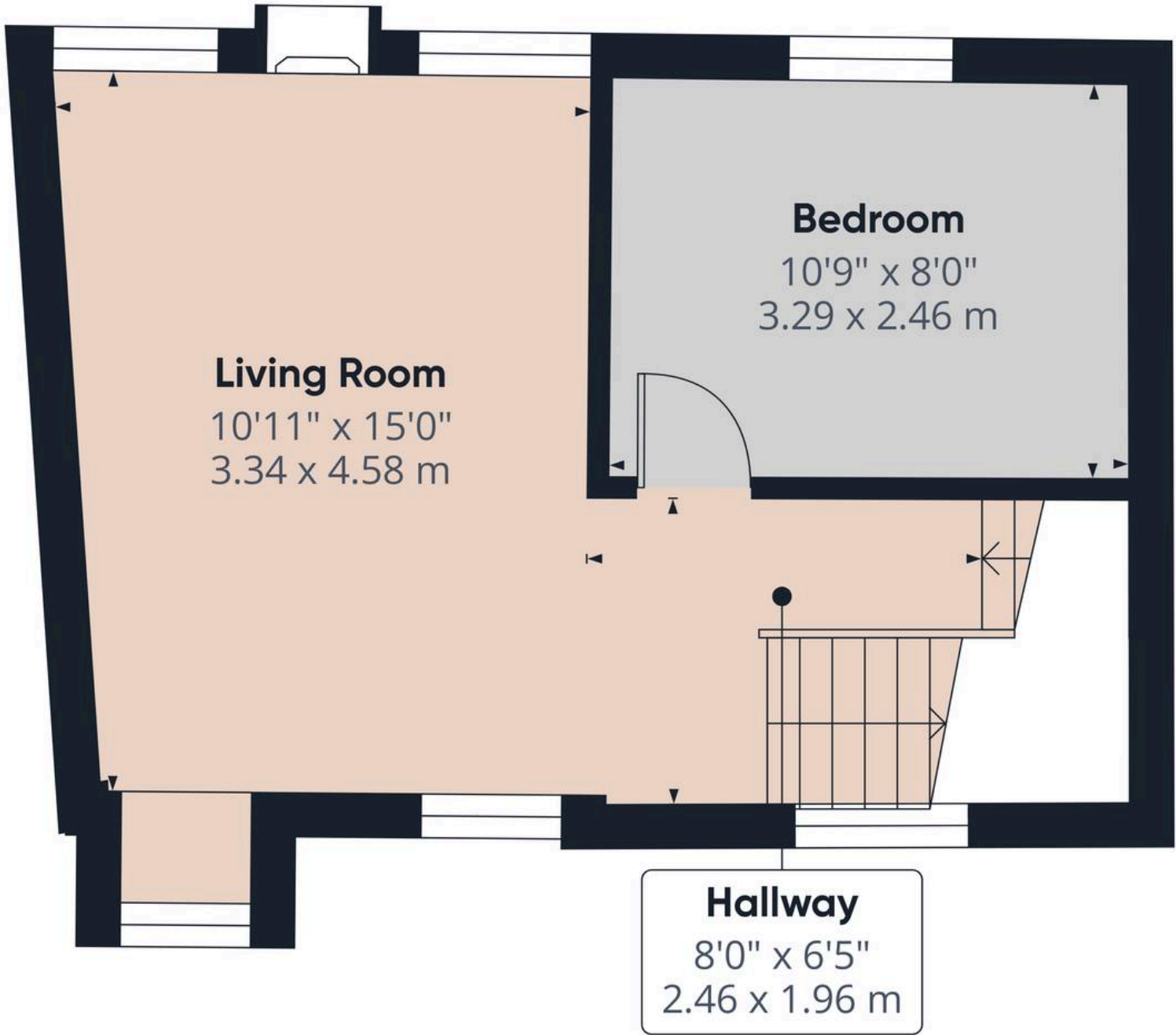
First Floor Building 1

Approximate total area⁽¹⁾
319 ft ²
29.7 m ²
Reduced headroom
5 ft ²
0.4 m ²

(1) Excluding balconies and terraces

Reduced headroom
 ----- Below 5 ft/1.5 m

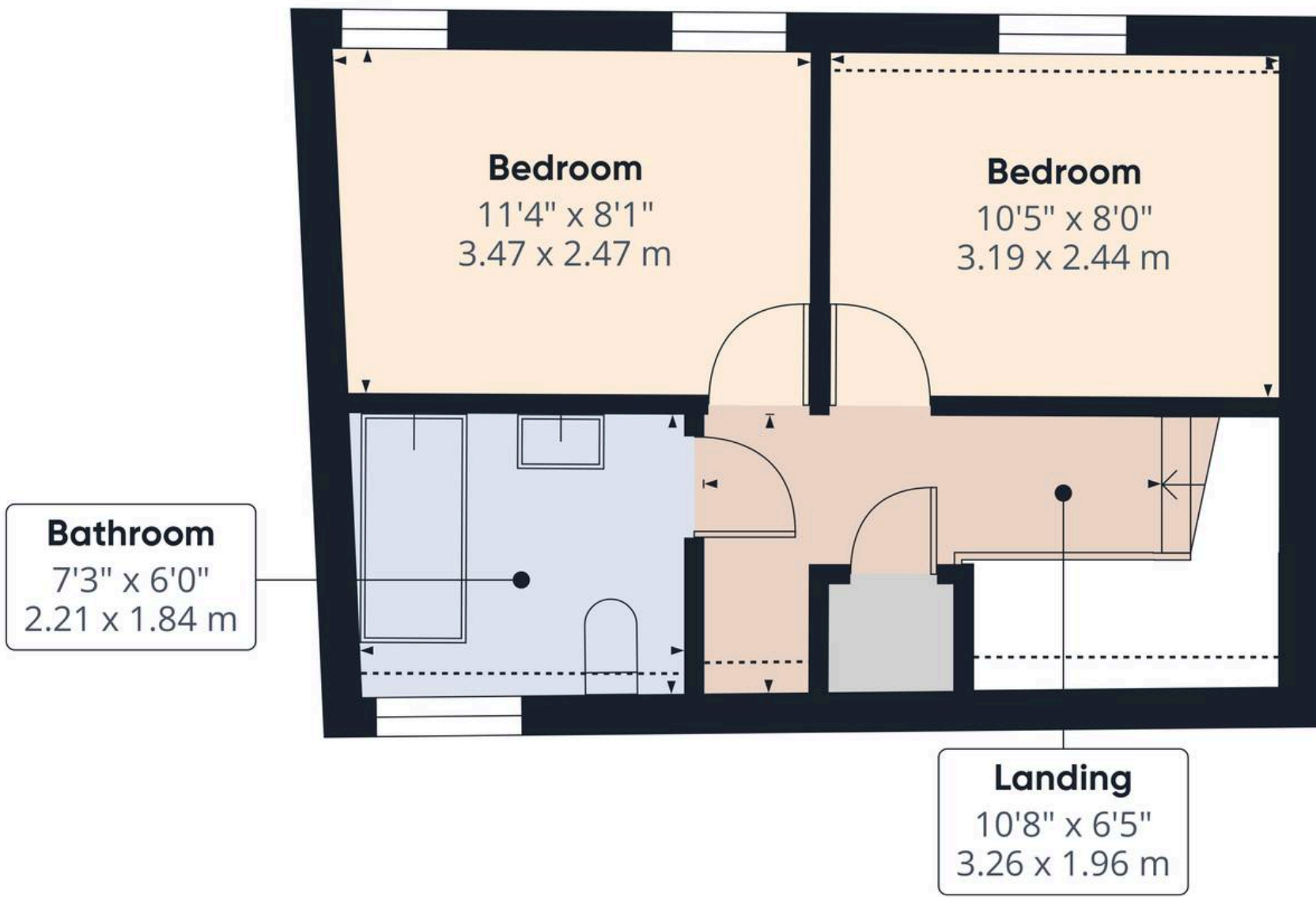
Calculations reference the RICS IPMS 3C standard. Measurements are approximate and not to scale. This floor plan is intended for illustration only.



Approximate total area⁽¹⁾
281 ft²
26.1 m²

(1) Excluding balconies and terraces

Calculations reference the RICS IPMS 3C standard. Measurements are approximate and not to scale. This floor plan is intended for illustration only.



Floor 2 Building 1

Approximate total area⁽¹⁾
269 ft²
25 m²

Reduced headroom
11 ft²
1 m²

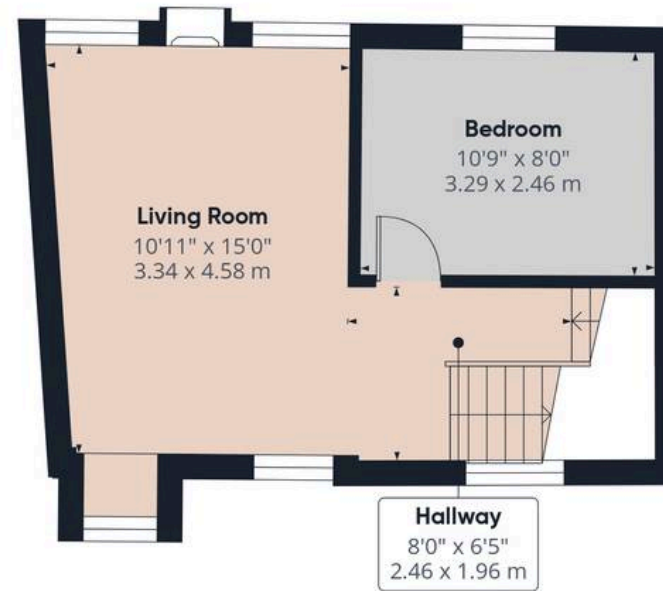
(1) Excluding balconies and terraces

Reduced headroom
----- Below 5 ft/1.5 m

Calculations reference the RICS IPMS 3C standard. Measurements are approximate and not to scale. This floor plan is intended for illustration only.



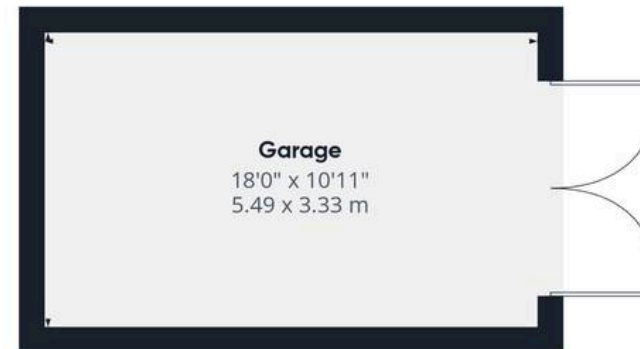
First Floor Building 1



Floor 1 Building 1



Floor 2 Building 1



First Floor Building 2

Approximate total area⁽¹⁾

1069 ft²
99.4 m²

Reduced headroom

15 ft²
1.4 m²

(1) Excluding balconies and terraces

Reduced headroom

----- Below 5 ft/1.5 m

Calculations reference the RICS IPMS 3C standard. Measurements are approximate and not to scale. This floor plan is intended for illustration only.

GIRAFFE360



Situated within a small, exclusive development in a rural hamlet, 5 Bank House Farm enjoys a peaceful setting surrounded by open Northumberland countryside. Despite its tranquil position, the property benefits from excellent accessibility, lying just a short distance from the A1, providing straightforward connections to Morpeth to the south and Alnwick to the north. The nearby villages of Warkworth and Amble offer a range of day-to-day amenities, while the stunning Northumberland coastline, with its sweeping beaches and coastal walks, is only a short drive away. This is a location that offers both privacy and convenience, ideal for those seeking a quieter pace of life.

Utilities

Heating: Oil Central Heating

Water: Direct Main Water

Electricity: National Grid

Sewerage: Small Treatment Plant



Northumberland Properties

12 Market Street, Alnwick - NE66 1TL

01665660910 • info@northumberlandproperties.co.uk • <http://northumberlandproperties.co.uk>



Northumberland
Properties