



2 Bedrooms | 1 Bathrooms | 2 Reception Rooms

Brocklesby Road | London | SE25 4LB

**£1,665 Per month**

**LOFT**

Brocklesby Road |  
London | SE25 4LB  
£1,665 Per month

- Mid-terrace home with on street parking, available immediately
- Spacious through lounge with plenty of room for lounging and dining
- Great-size kitchen with space for all the appliances
- Two bedrooms and large bathroom on the first floor
- 10min walk to Norwood Junction train station & Harrington Road tram stop
- Local shops and supermarkets a stone's throw away
- Minutes from South Norwood Country Park

## Ground Floor

### Hallway

### Reception Room

11'7 x 11'5 (3.53m x 3.48m)

### Reception Room

15'1 x 12'10 (4.60m x 3.91m)

### Kitchen

14'6 x 9'2 (4.42m x 2.79m)

## First Floor

### Landing

### Bedroom

15'1 x 11'5 (4.60m x 3.48m)

### Bedroom

9'8 x 7'8 (2.95m x 2.34m)

### Bathroom

## Outside

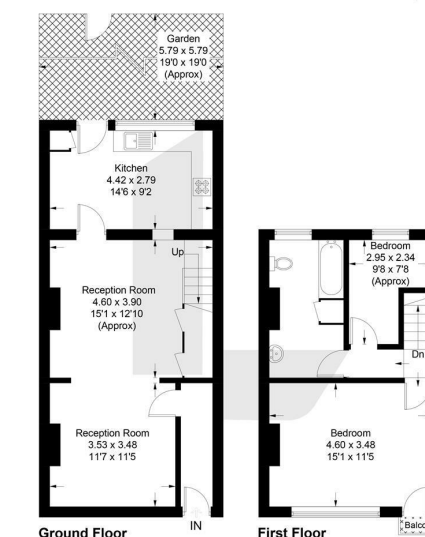
### Garden

19'0 x 19'0 (5.79m x 5.79m)



### Brocklesby Road, SE25

Approximate Gross Internal Area = 84.1 sq m / 905 sq ft



This plan is for layout guidance only. Not drawn to scale unless stated. Windows and door openings are approximate. Whilst every care is taken in the preparation of this plan, please check all dimensions, shapes and compass bearings before making any decisions reliant upon them. (ID1264882)



EPC Rating: D

23a High Street  
Purley  
Surrey  
CR8 2AF

0208 660 8070  
hello@loft-estates.co.uk

